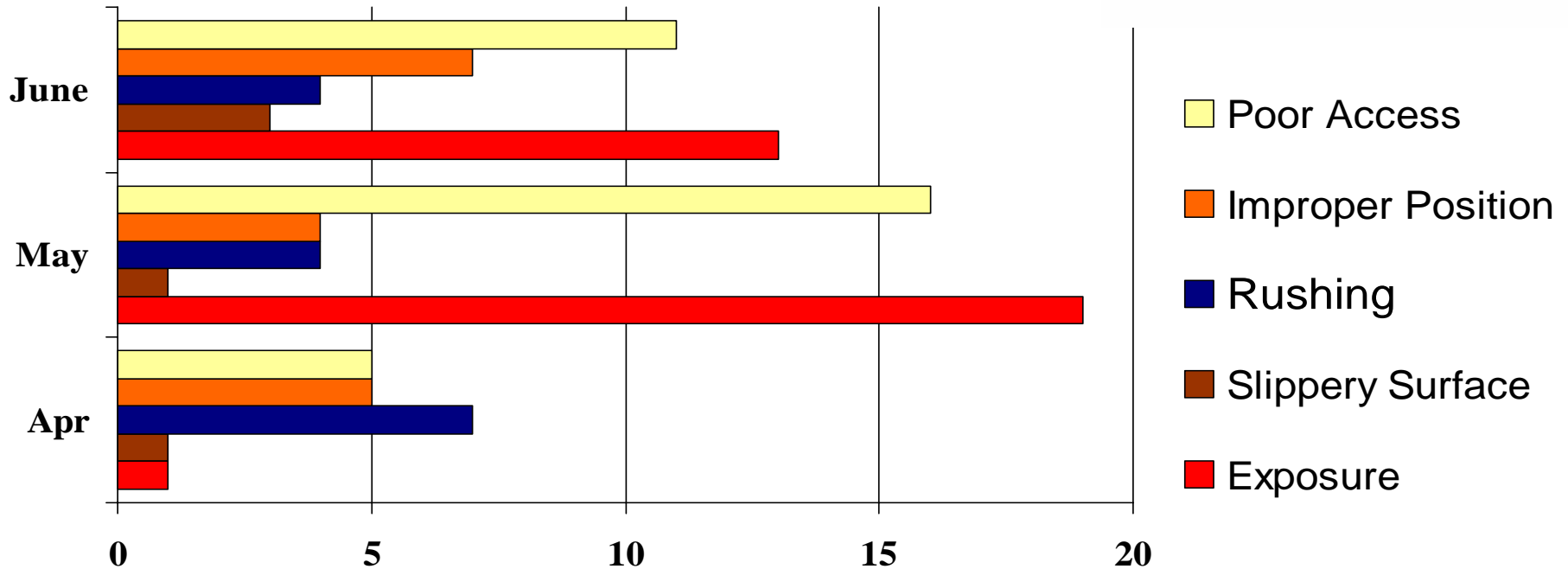


1 “At Risk” Behaviour

Top 5 of 9

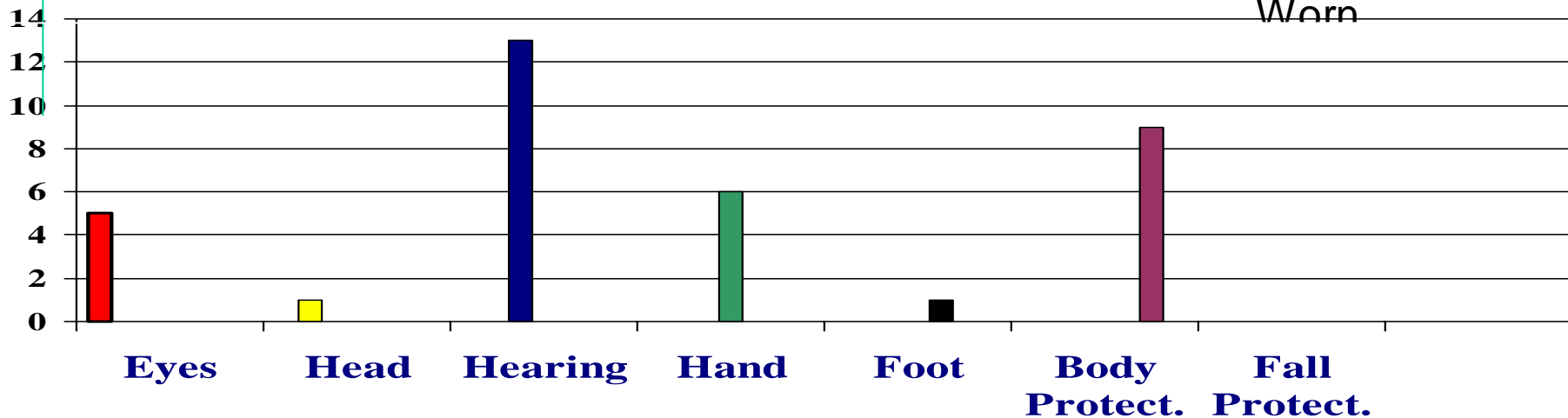
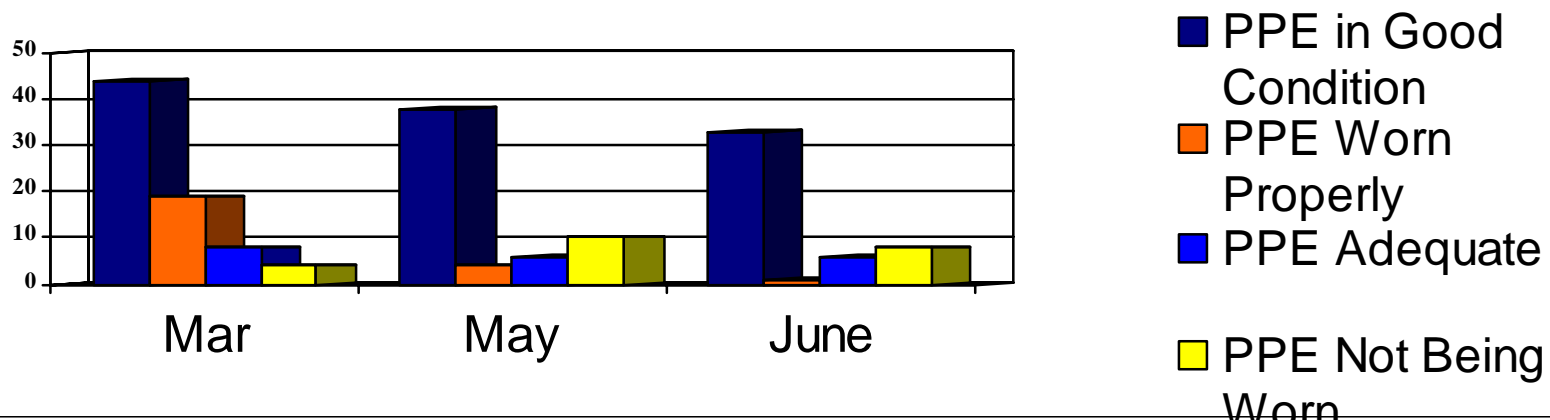
Position and Action



Exposure was the highest “AT RISK” in June!

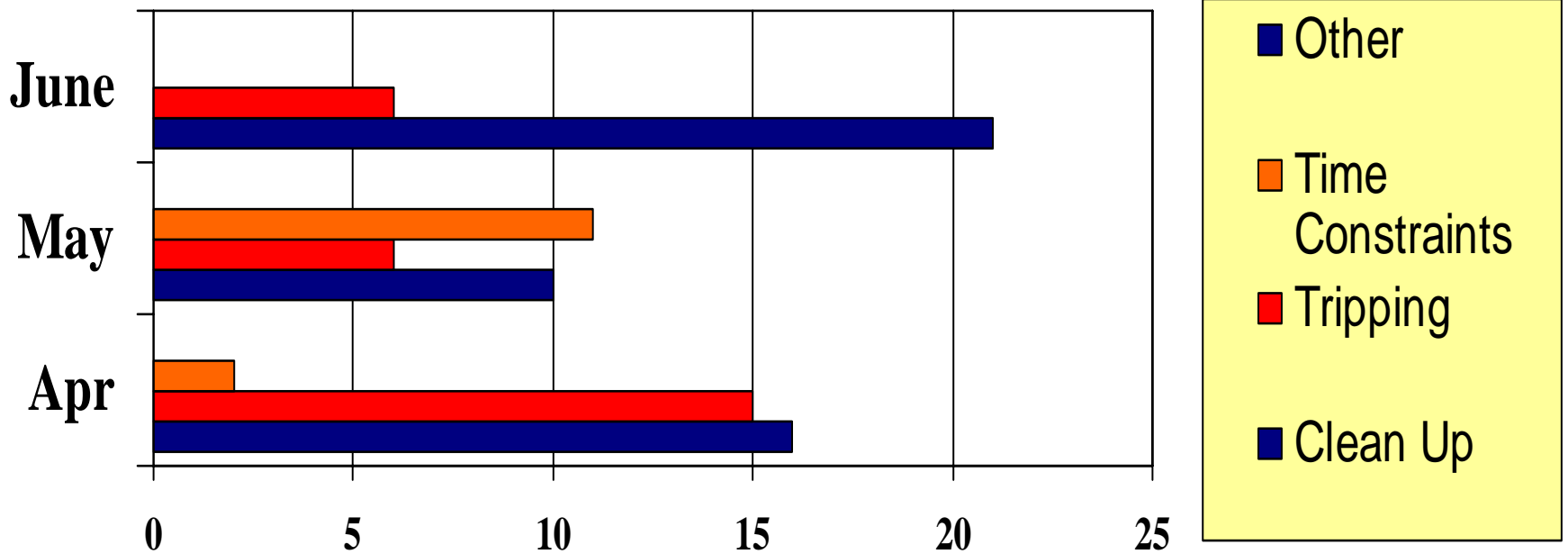
#2 *At Risk Behaviour*

Personal Protective Equipment



Sound advice that you should hear: Always wear Protective Gear!

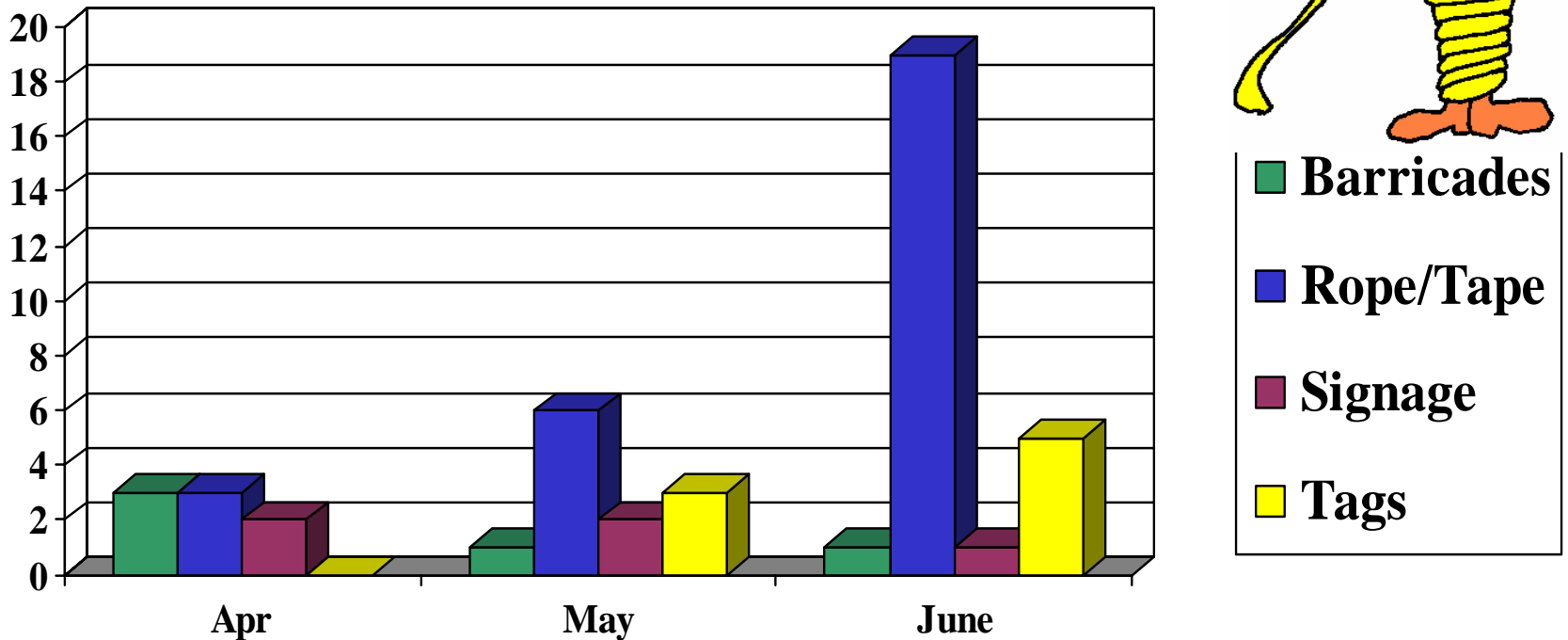
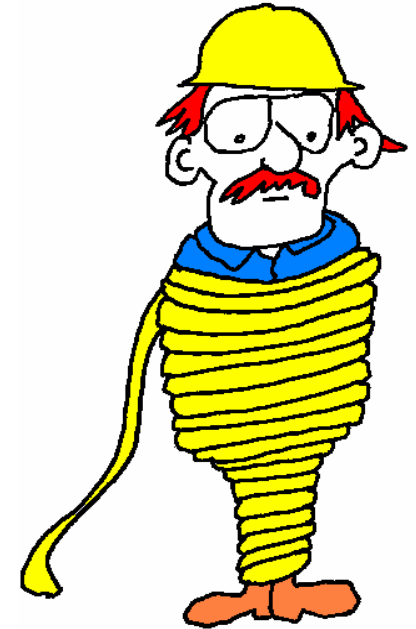
#3 "At Risk" Behaviour Housekeeping



Safety starts with "S" but begins with "U"

#4 “At Risk”

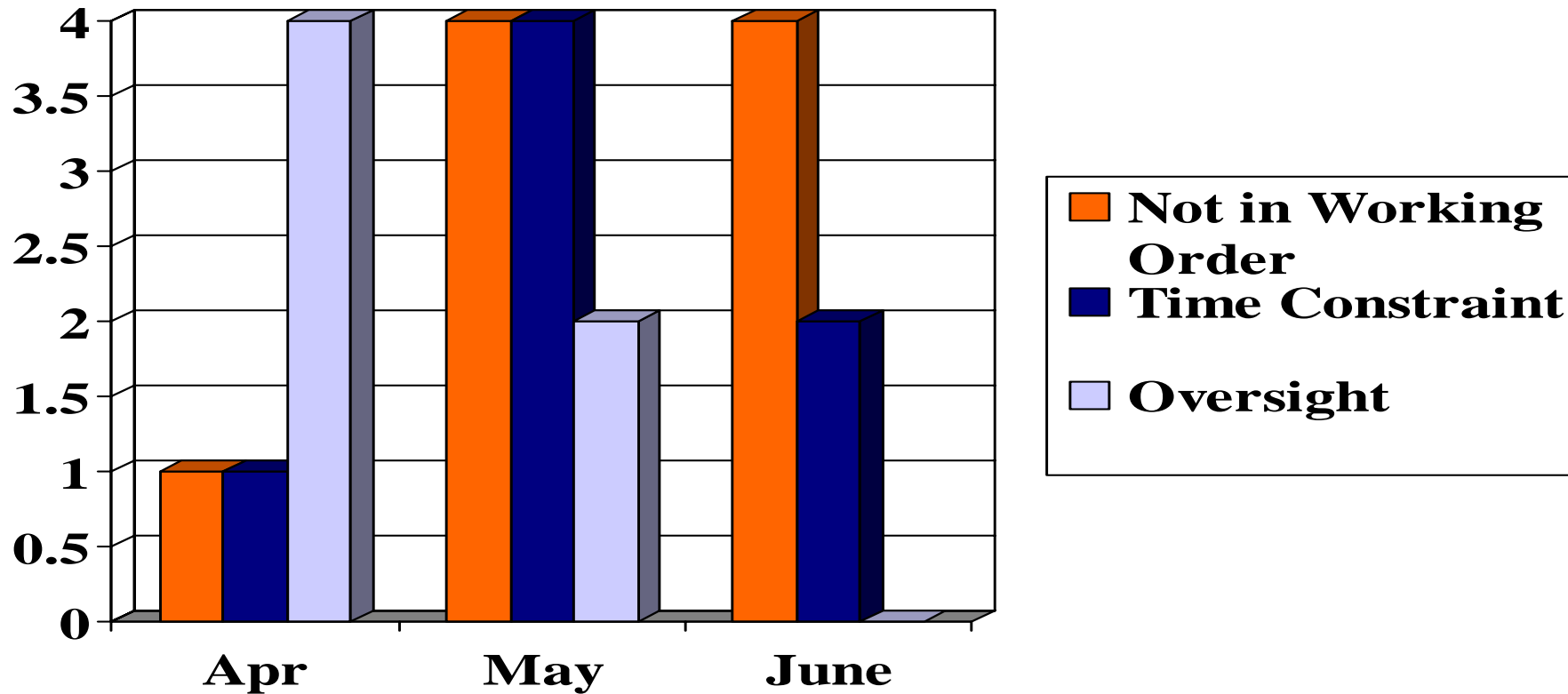
Personal Protective Devices



Rope & Tape were an “AT RISK” in June!

#5 At Risk Behaviour

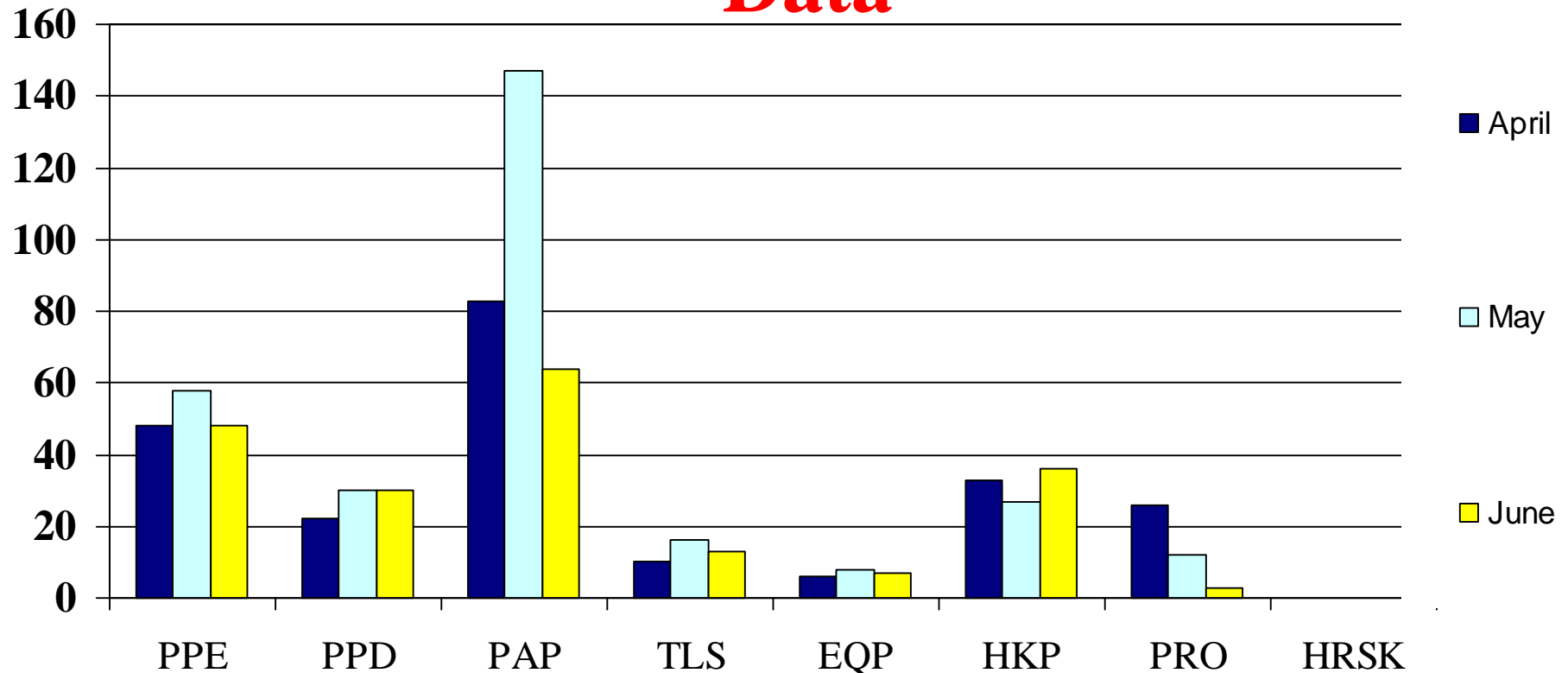
TOOLS



Life did not begin by accident. Don't end it as one.

Observation Breakdown

2006 2nd Quarter Contractor Submitted Data



2509 Observations done by
388 Observers in 2nd Q 2006!