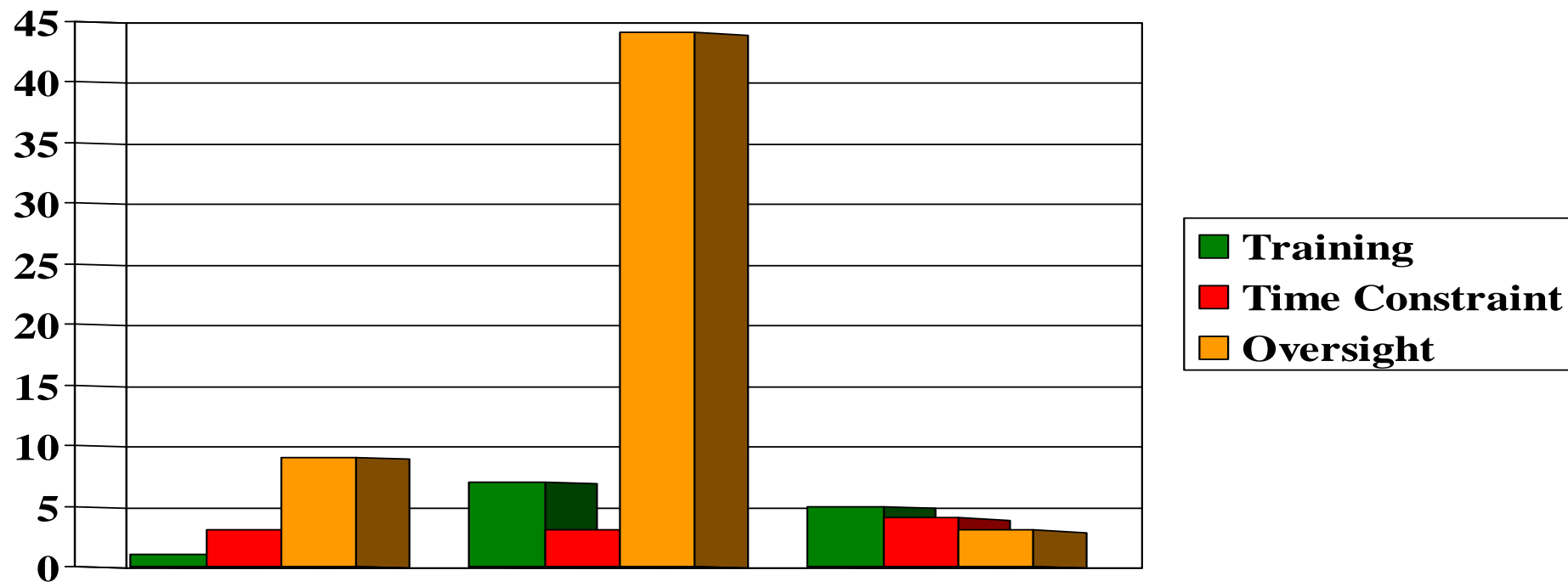
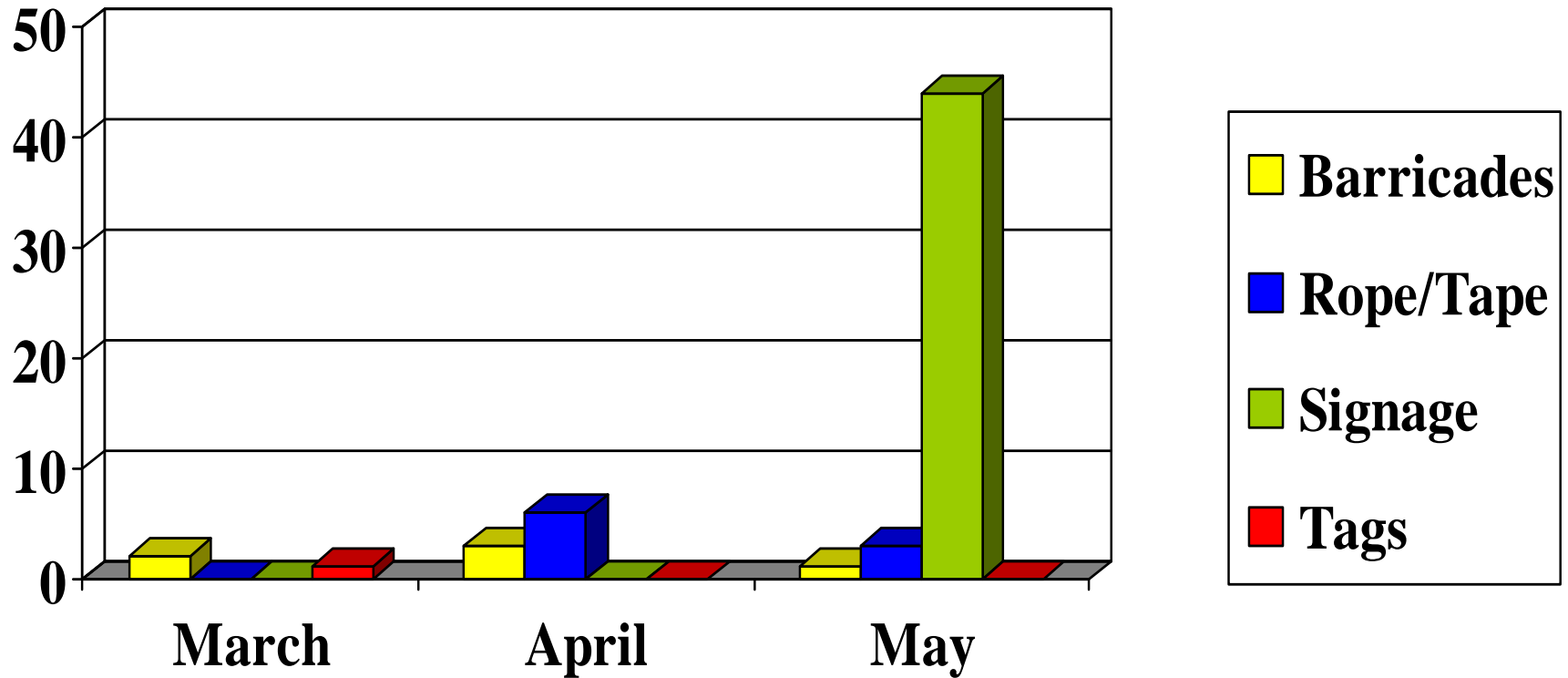




INDUSTRIAL EDUCATIONAL CO-OPERATIVE

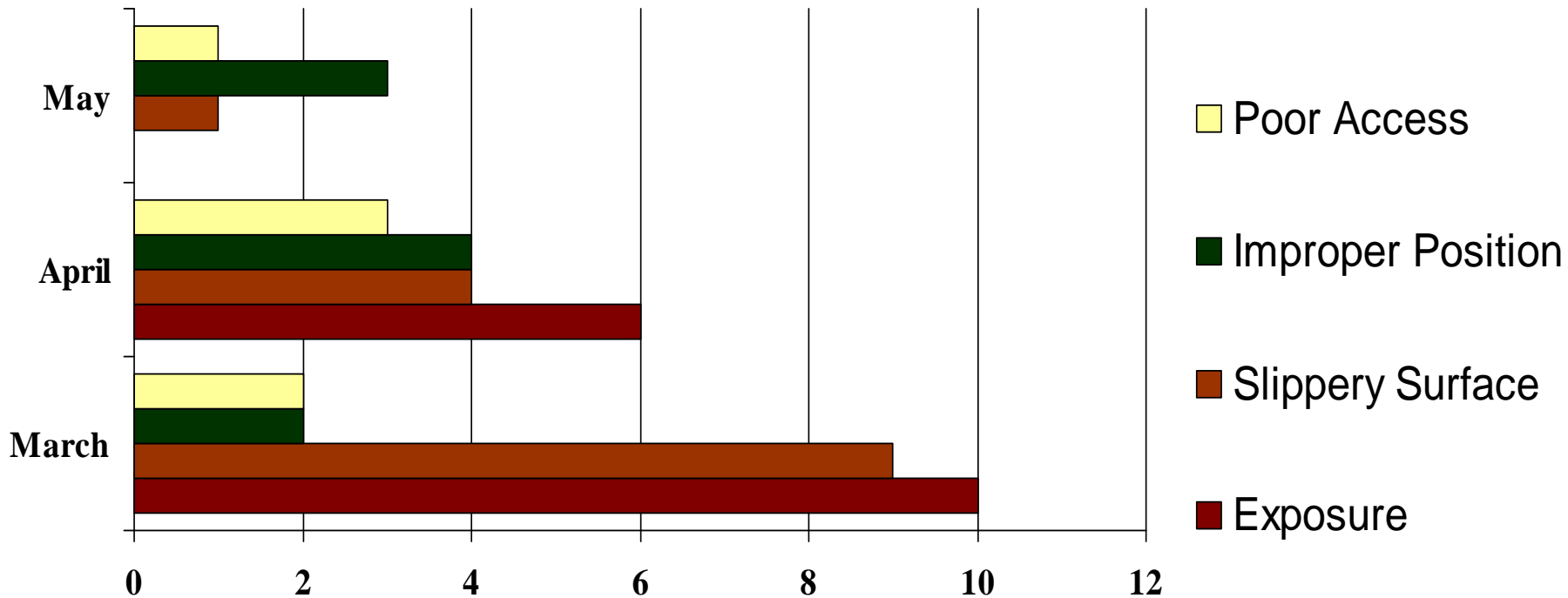


2009 - #1 “at risk” Behaviour in May
- Procedures -

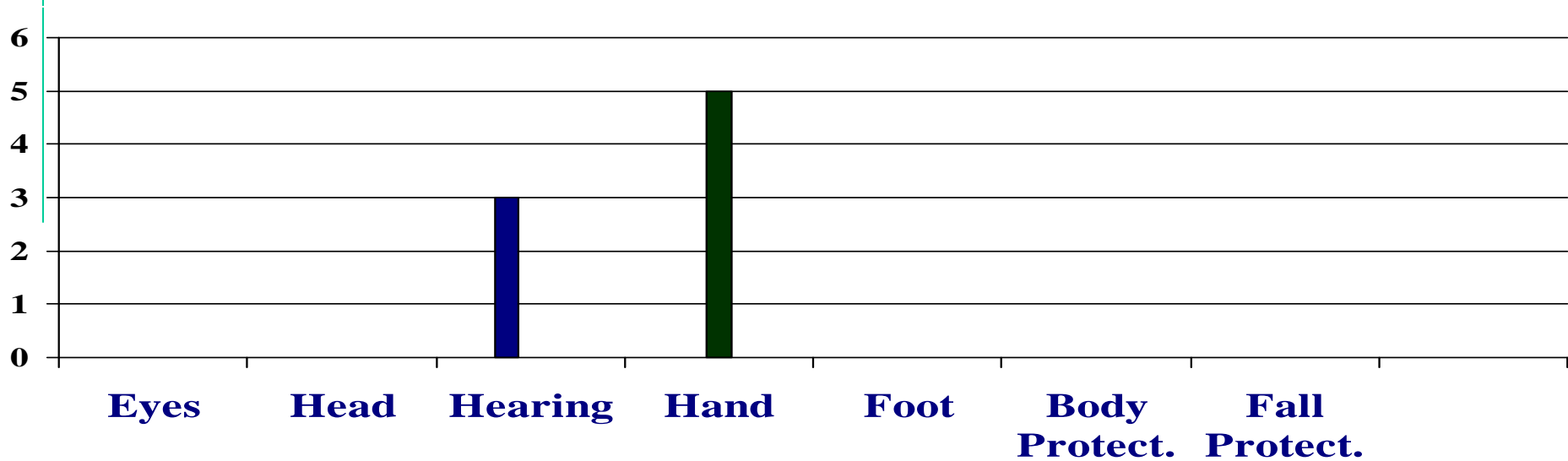
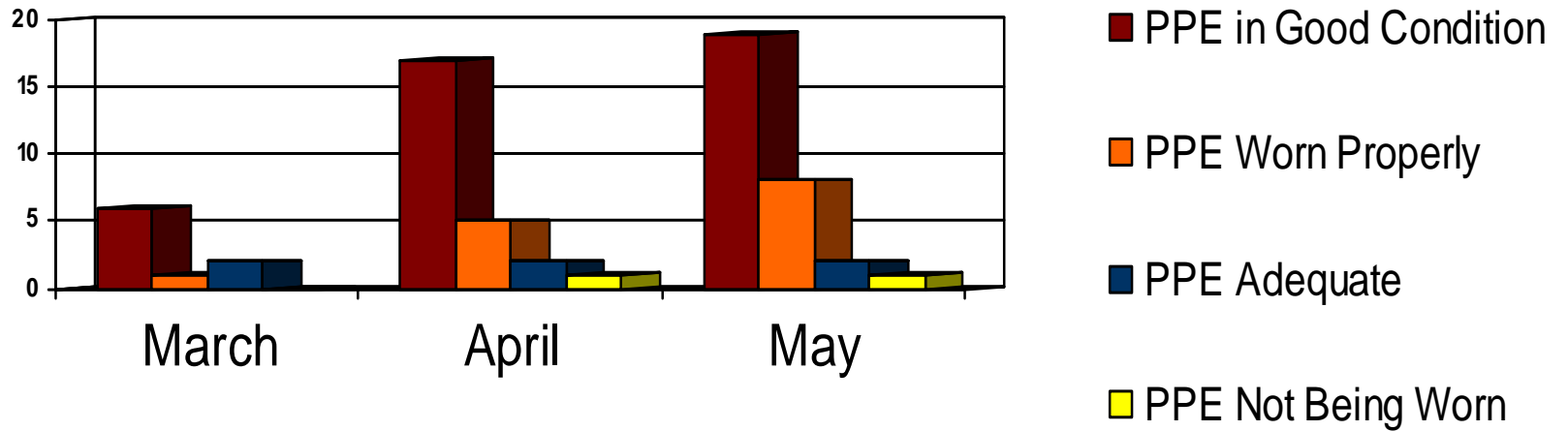


2009 - #2 “at risk” Behaviour in May

- Personal Protective Devices -



**2009 – #3 “at risk” Behaviour for May
-Positions & Actions –**

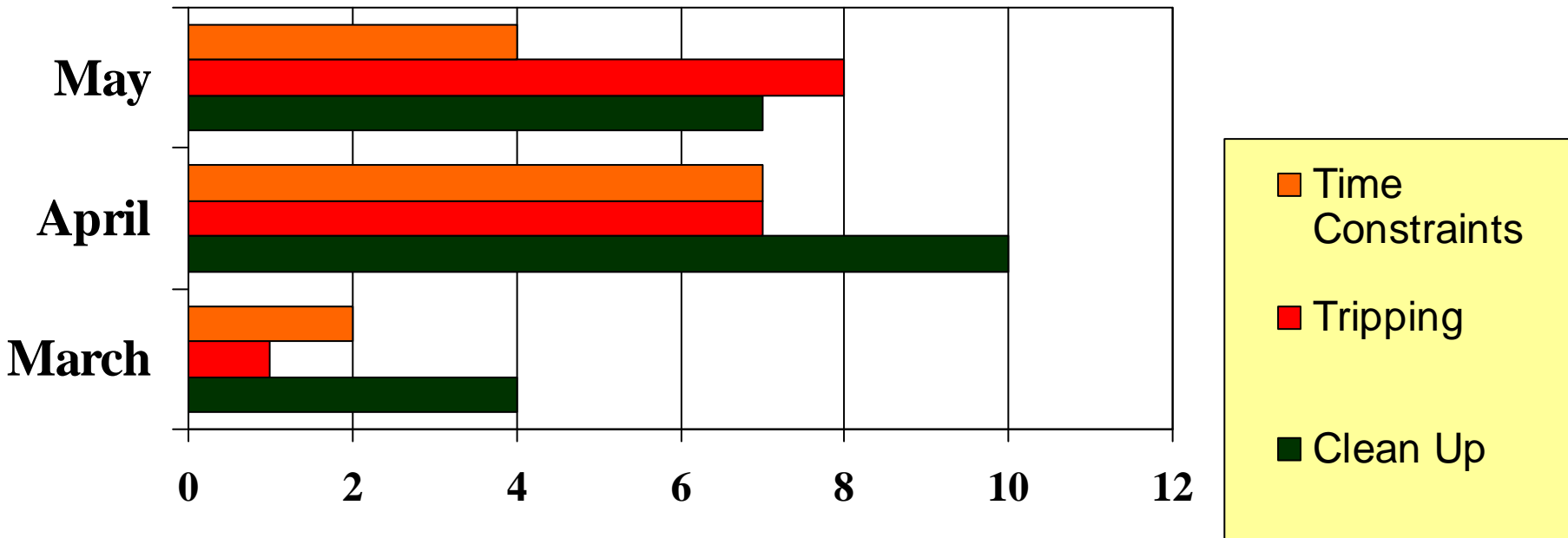


2009 - #4 “at risk” Behaviour for May

-Personal Protective Equipment –



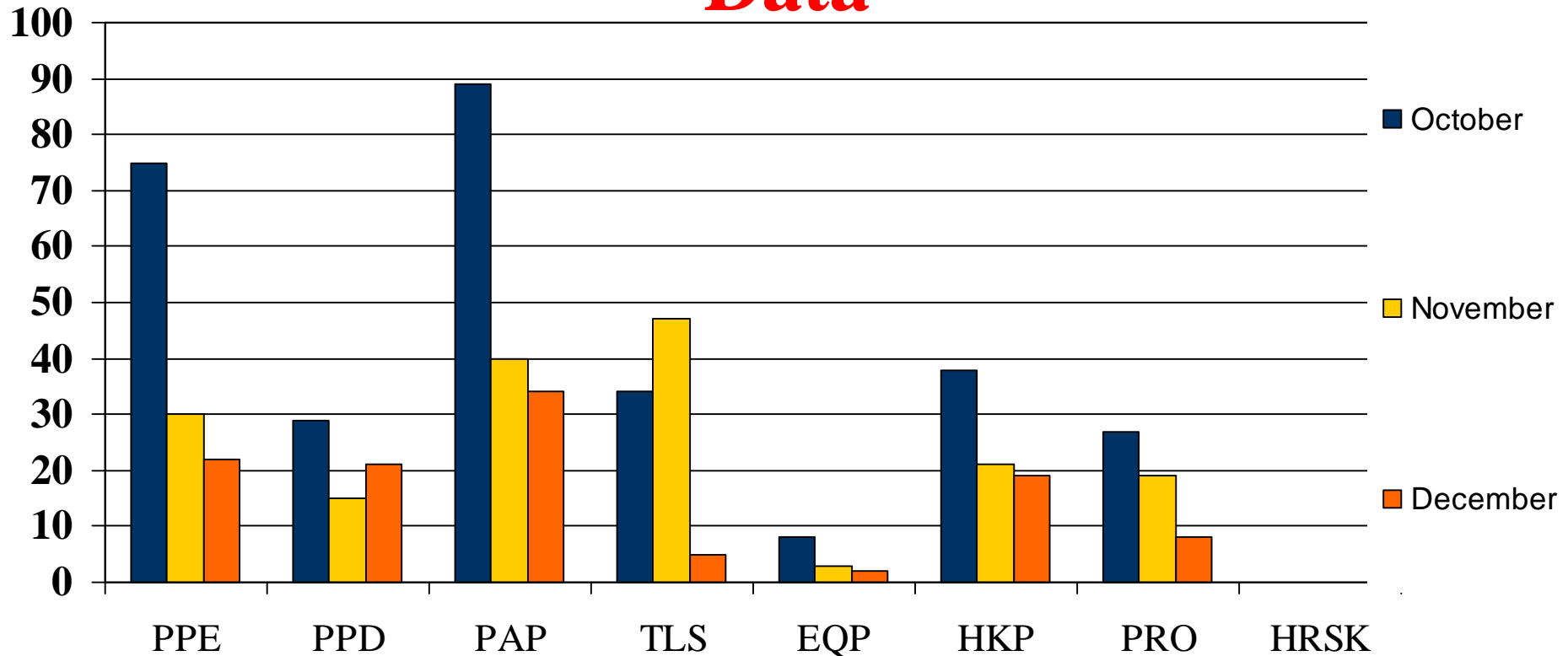
INDUSTRIAL EDUCATIONAL CO-OPERATIVE



**2009 – #5 “at risk” Behaviour in May
- Housekeeping -**

Observation Breakdown

2009 – 1st Quarter Contractor Submitted Data



2089 Observations done by
209 Observers in 1st Quarter 2009!
Don't forget to do your "TASC"