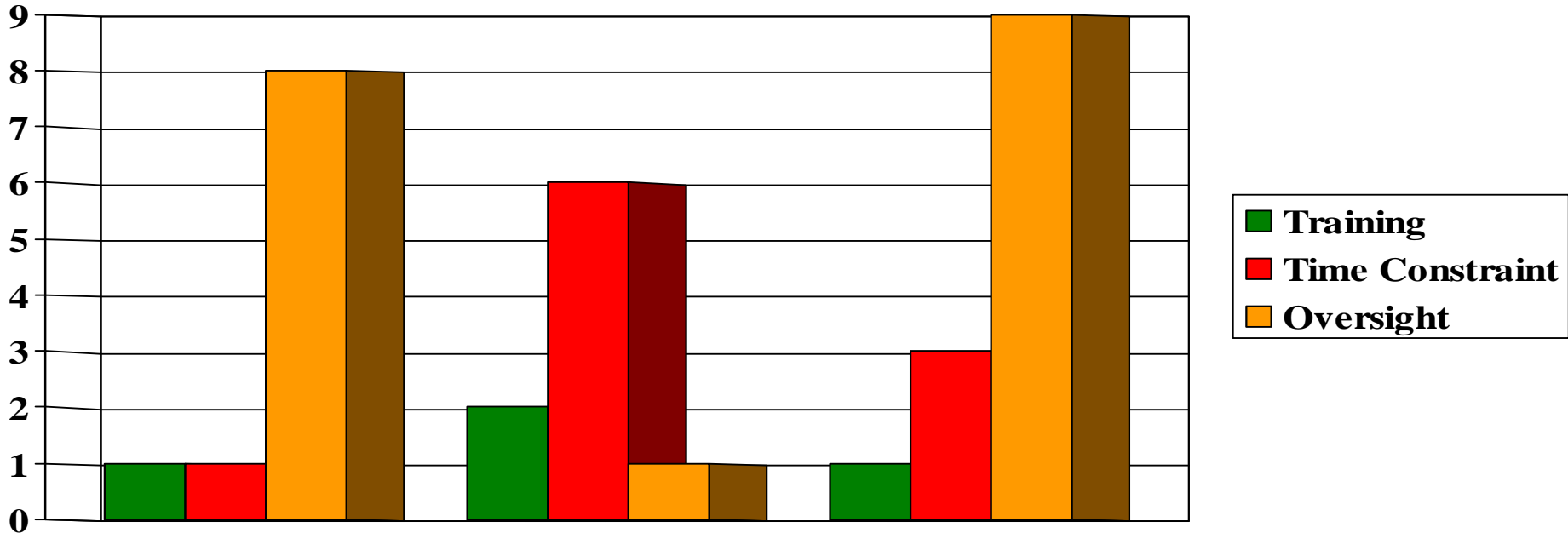
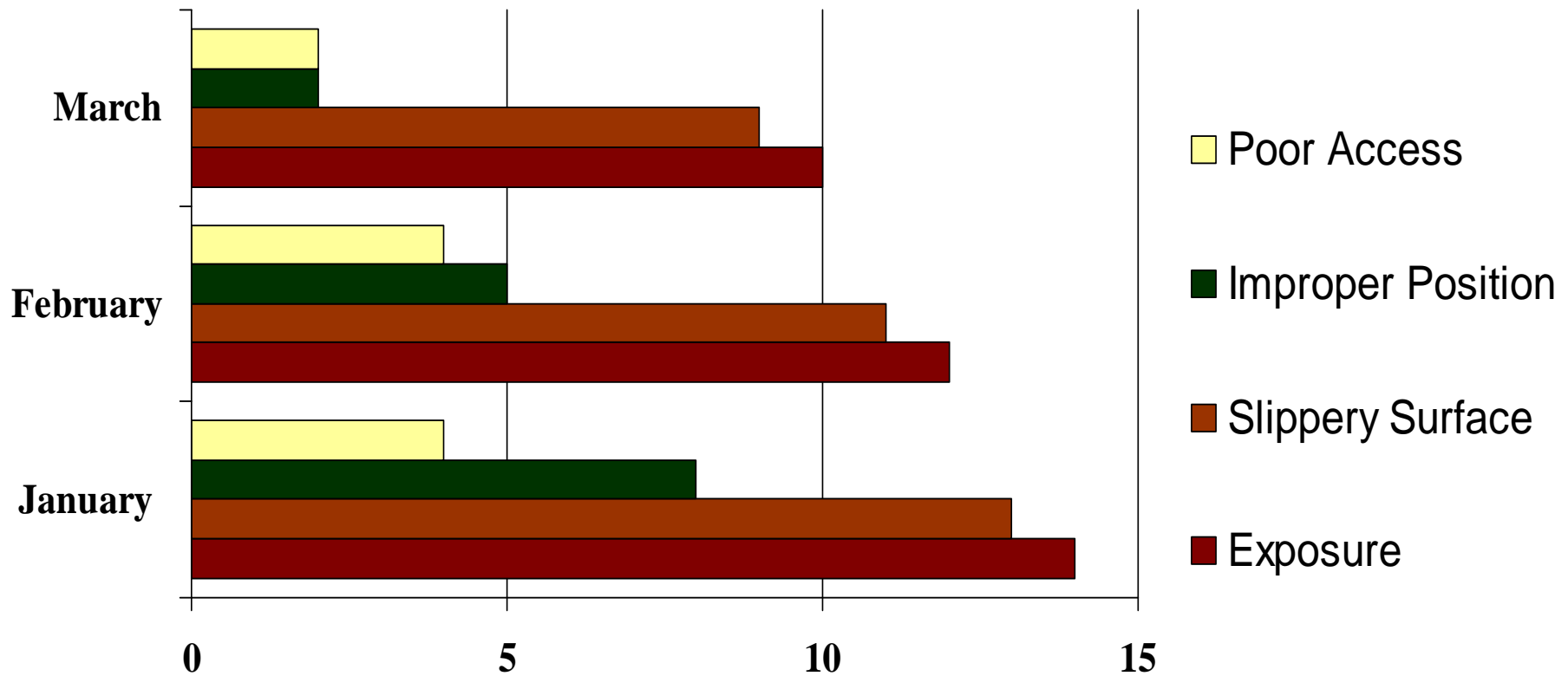




# INDUSTRIAL EDUCATIONAL CO-OPERATIVE



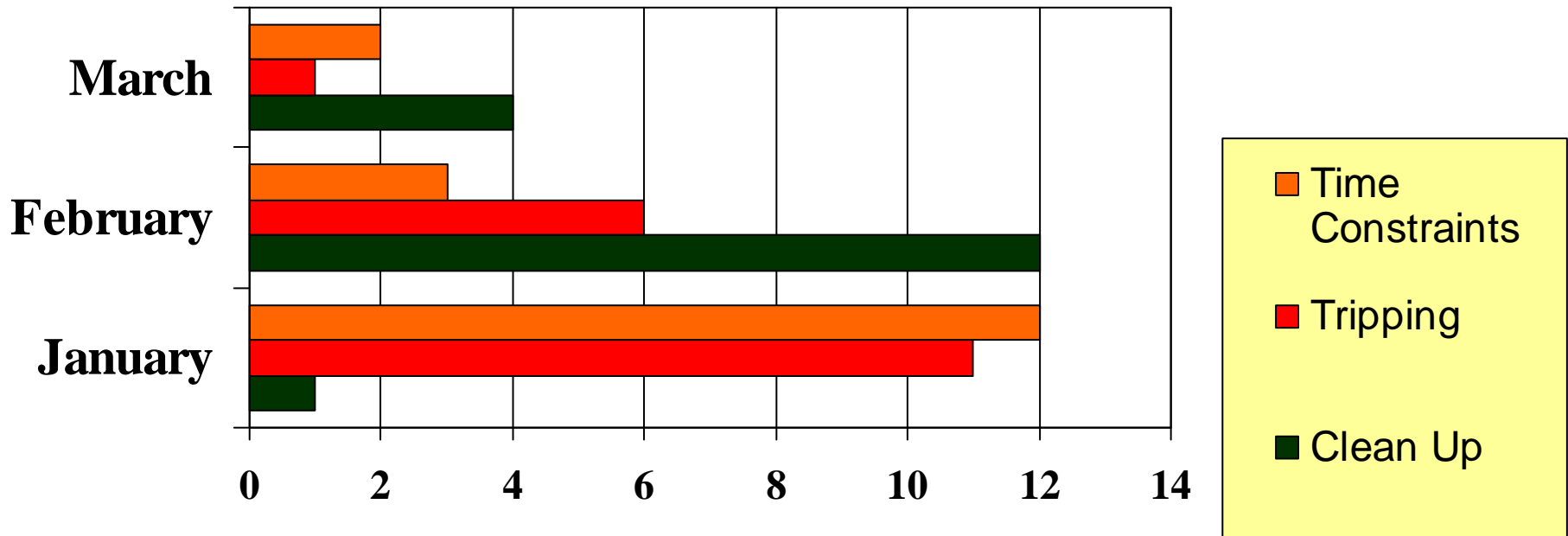
**2009 - #1 “at risk” Behaviour in March**  
**- Procedures -**



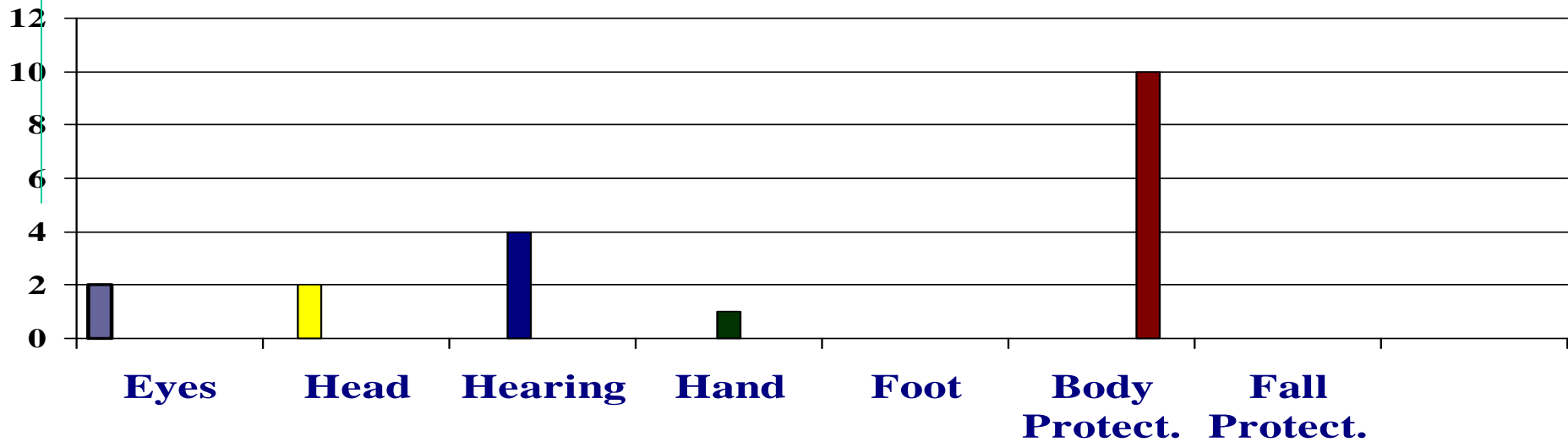
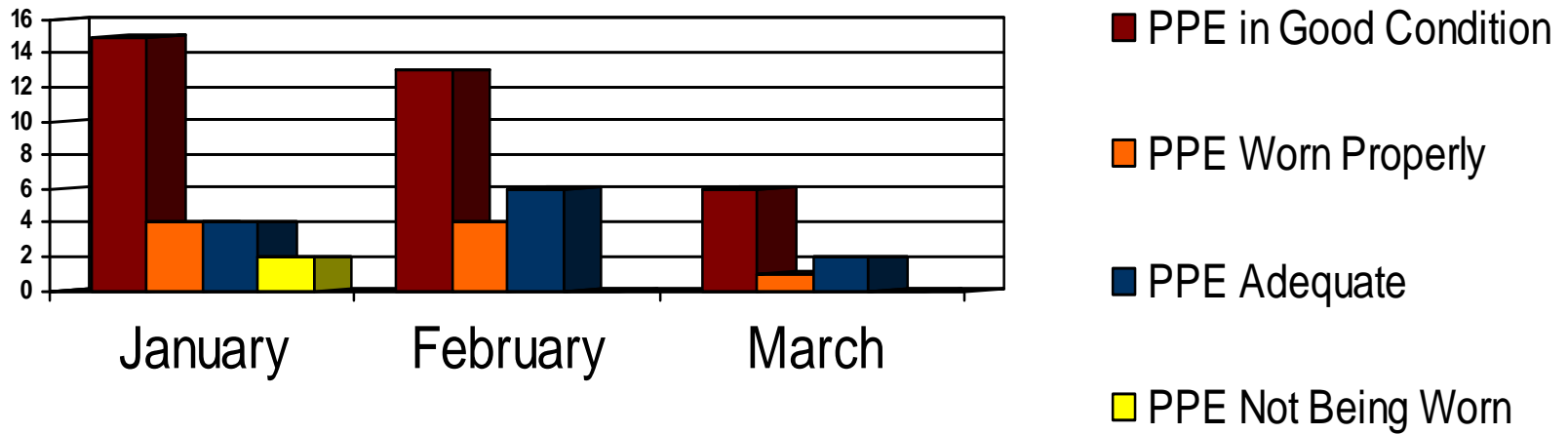
**2009 – Tied #2 “at risk” Behaviour for March  
-Positions & Actions –**



# INDUSTRIAL EDUCATIONAL CO-OPERATIVE



**2009 – Tied #2 “at risk” Behaviour in March  
- Housekeeping -**

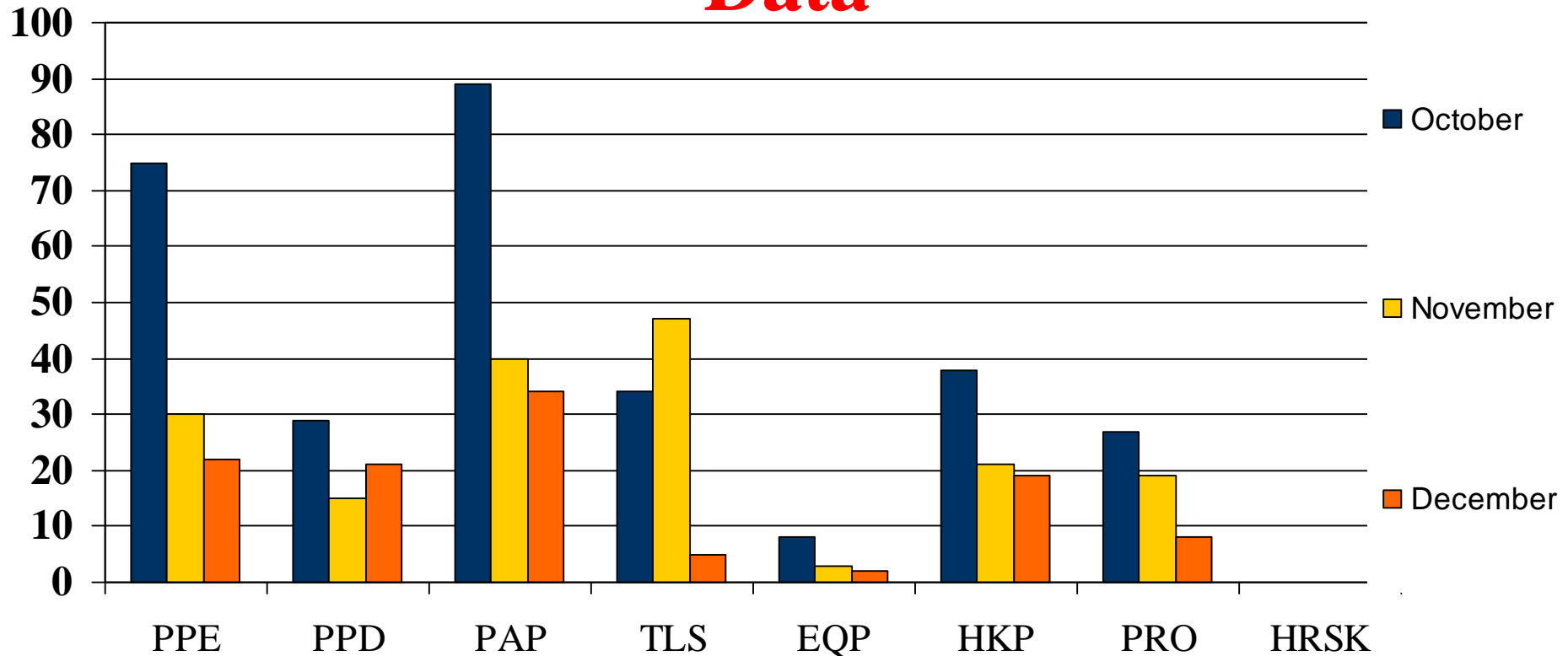


**2009 - #3 “at risk” Behaviour for March**

**-Personal Protective Equipment -**

# Observation Breakdown

## 2009 – 1<sup>st</sup> Quarter Contractor Submitted Data



2089 Observations done by  
209 Observers in 1<sup>st</sup> Quarter 2009!

Don't forget to do your "TASC"