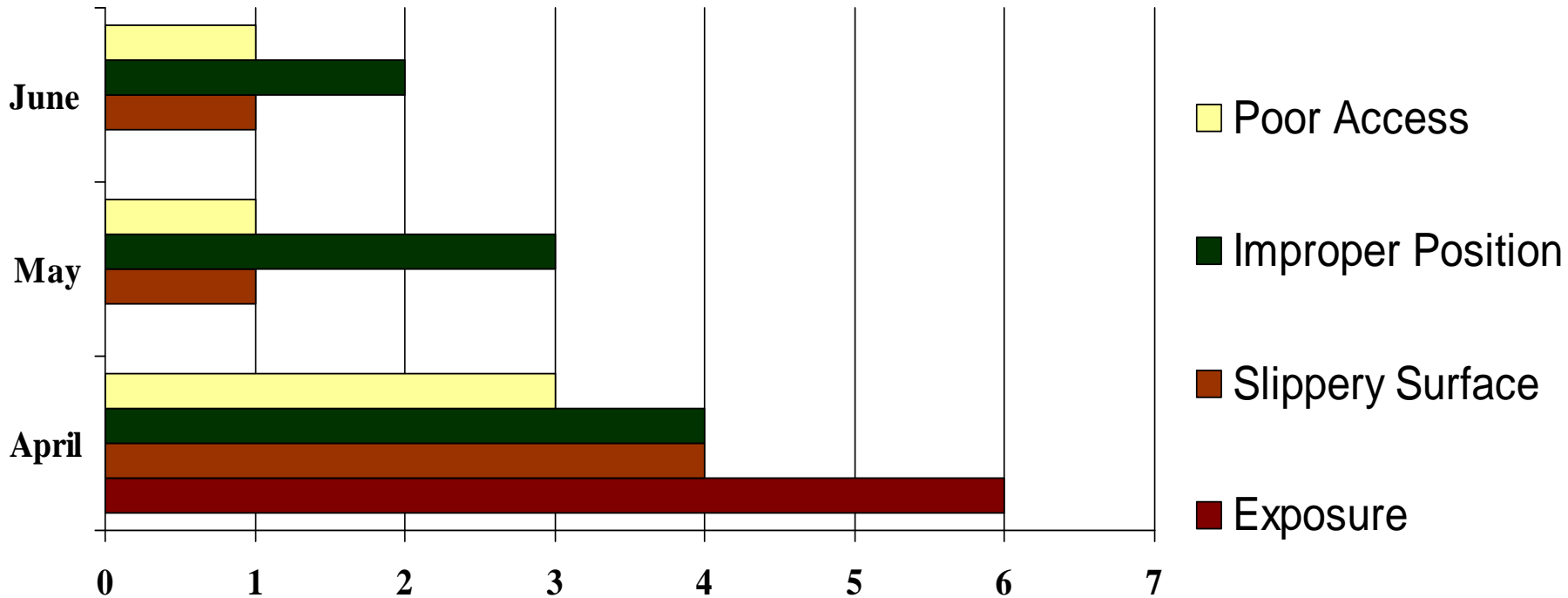


2009 - #1 “at risk” Behaviour for June

-Personal Protective Equipment –



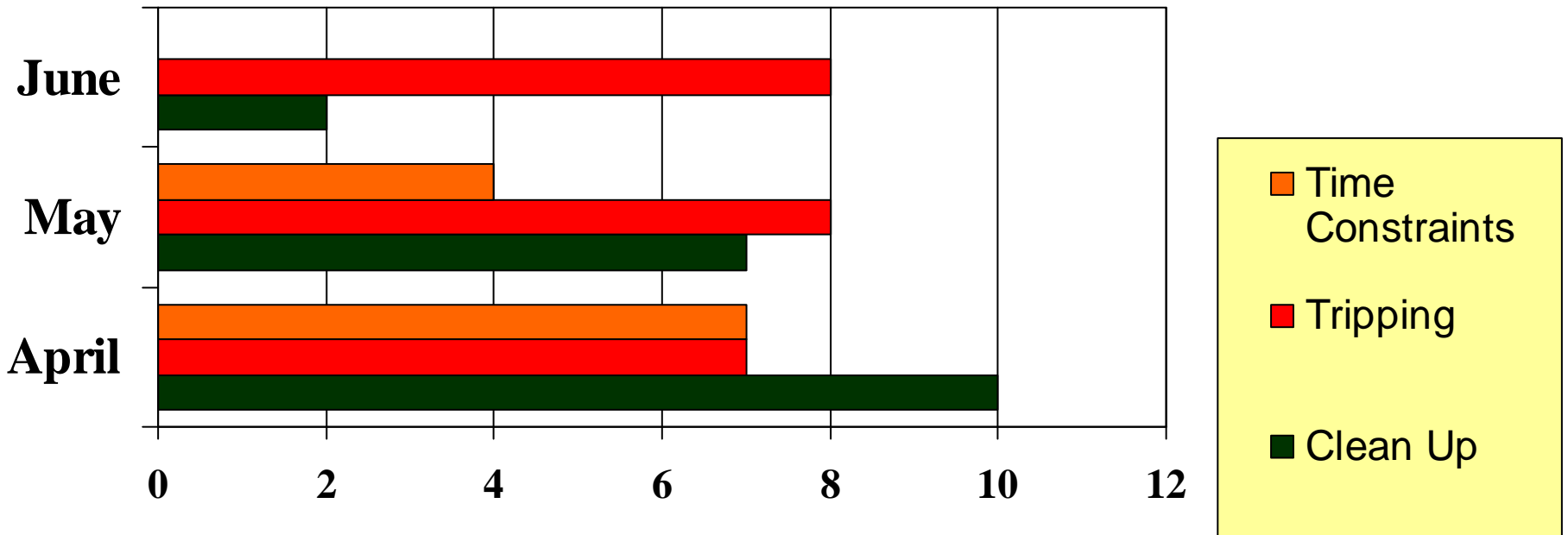
INDUSTRIAL EDUCATIONAL CO-OPERATIVE



**2009 – #2 “at risk” Behaviour for June
-Positions & Actions –**



INDUSTRIAL EDUCATIONAL CO-OPERATIVE

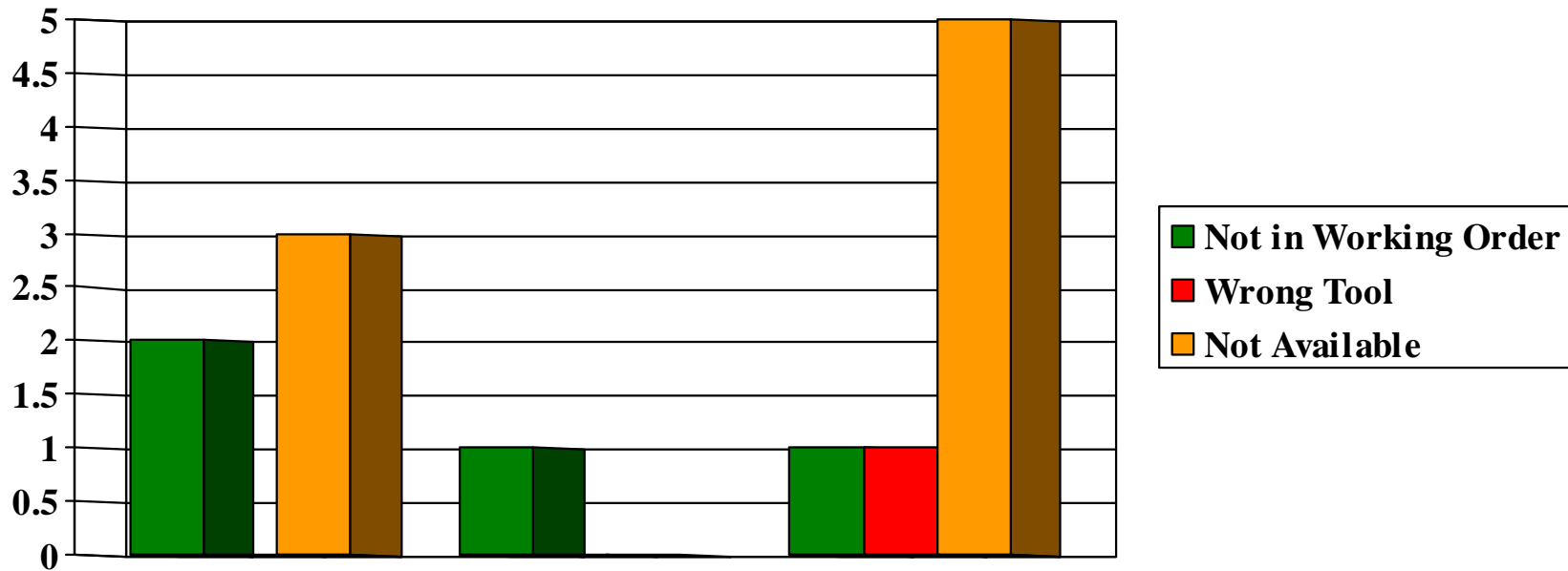


**2009 – #3 “at risk” Behaviour in June
- Housekeeping -**



SARNIA - LAMBTON

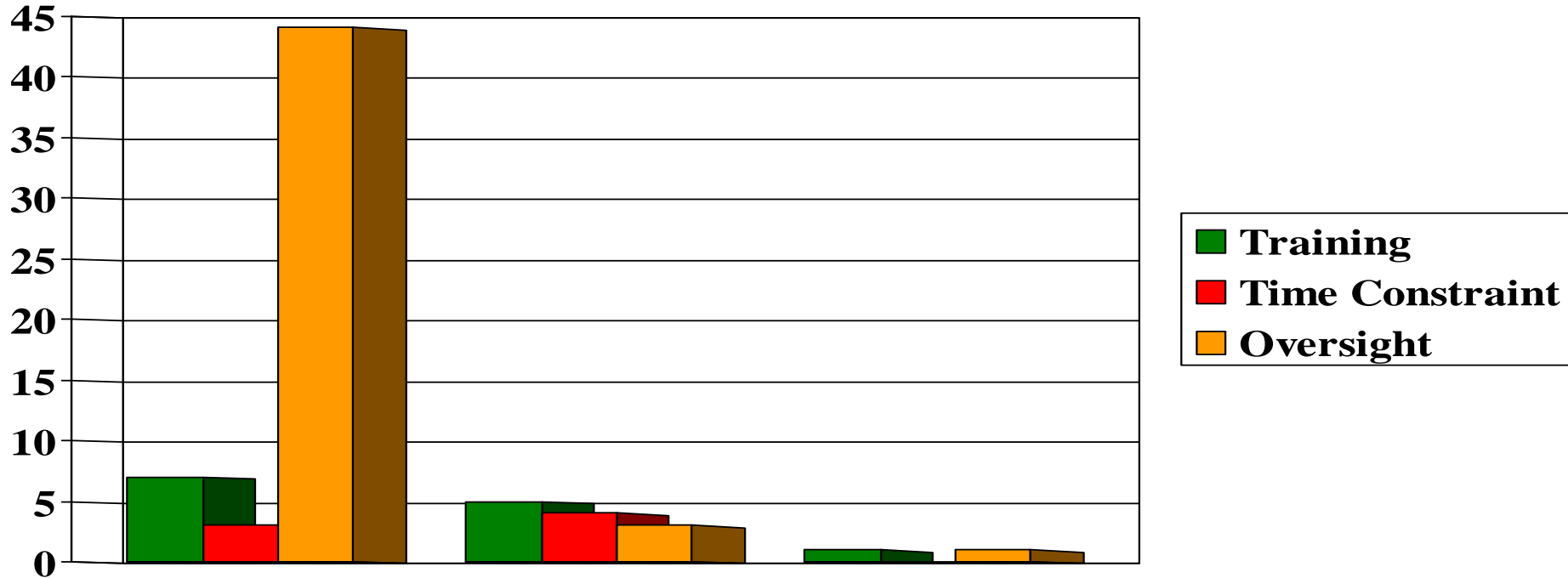
**INDUSTRIAL
EDUCATIONAL
CO-OPERATIVE**



**2009 - #4 “at risk” Behaviour in June
-Tools -**



INDUSTRIAL EDUCATIONAL CO-OPERATIVE

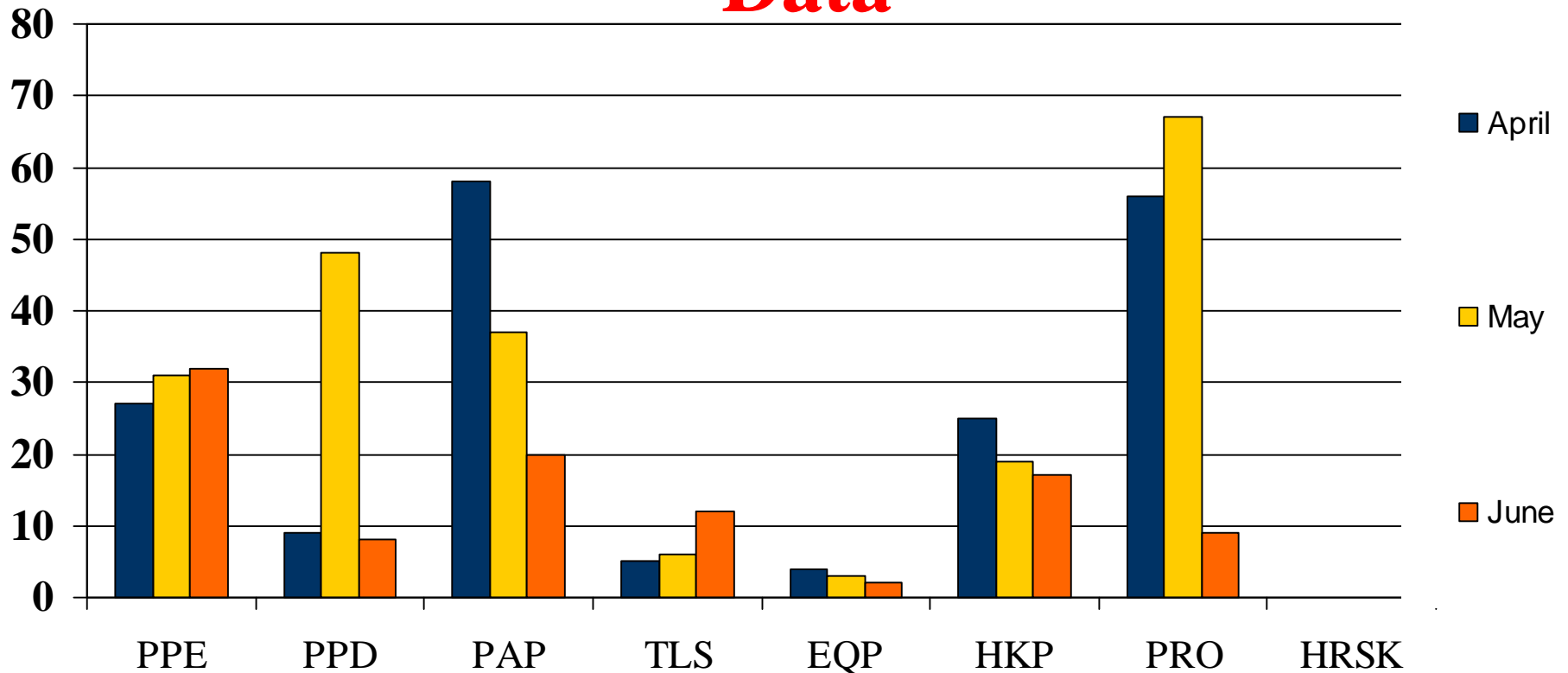


2009 - #5 “at risk” Behaviour in June

- Procedures -

Observation Breakdown

2009 – 2nd Quarter Contractor Submitted Data



4128 Observations done by
251 Observers in 2nd Quarter 2009!

Don't forget to do your "TASC"