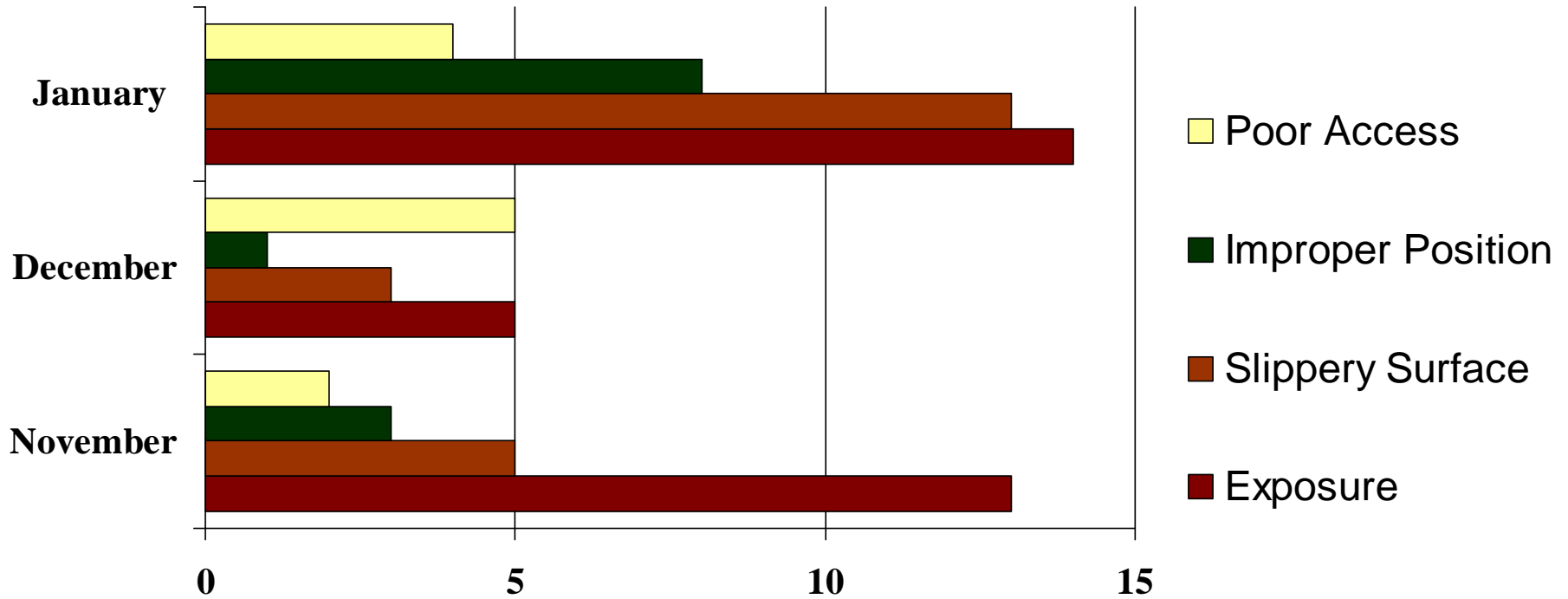


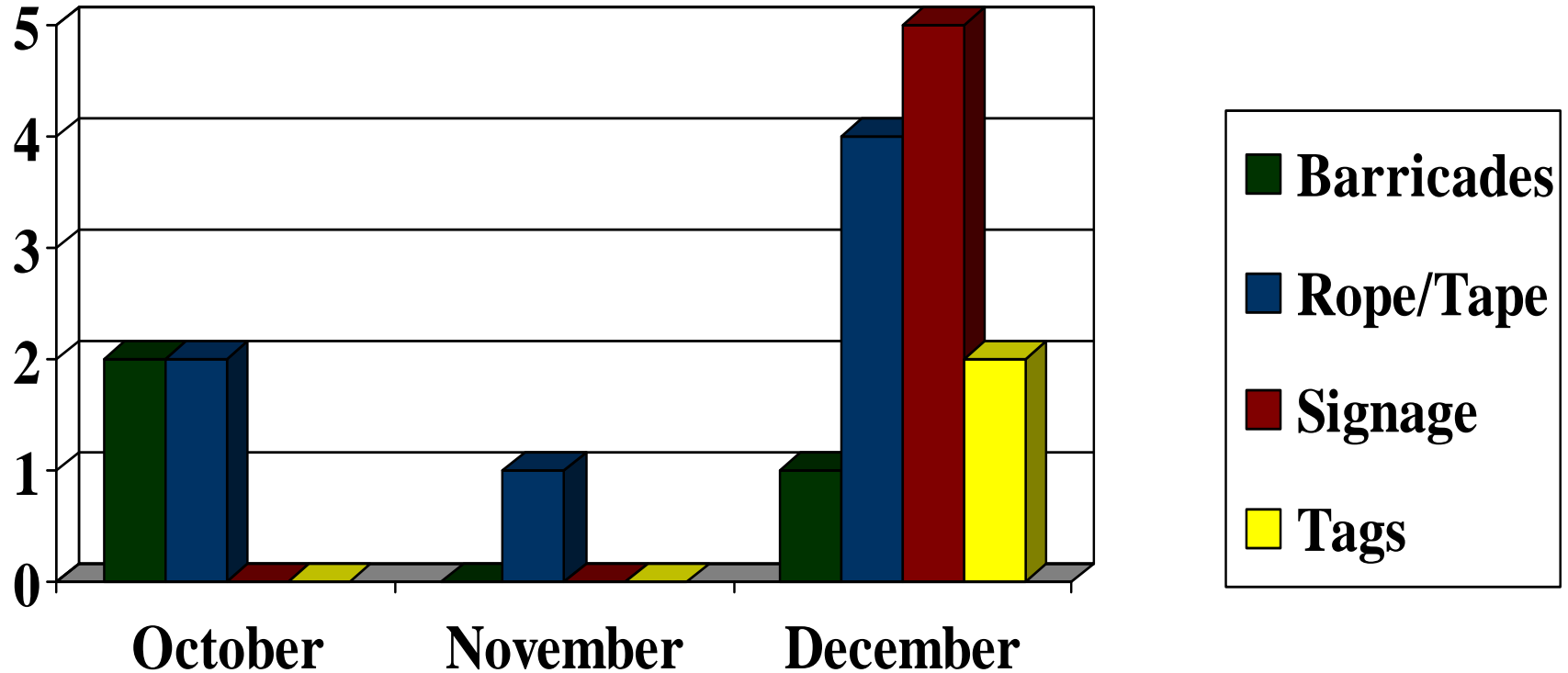


SARNIA - LAMBTON

# INDUSTRIAL EDUCATIONAL CO-OPERATIVE



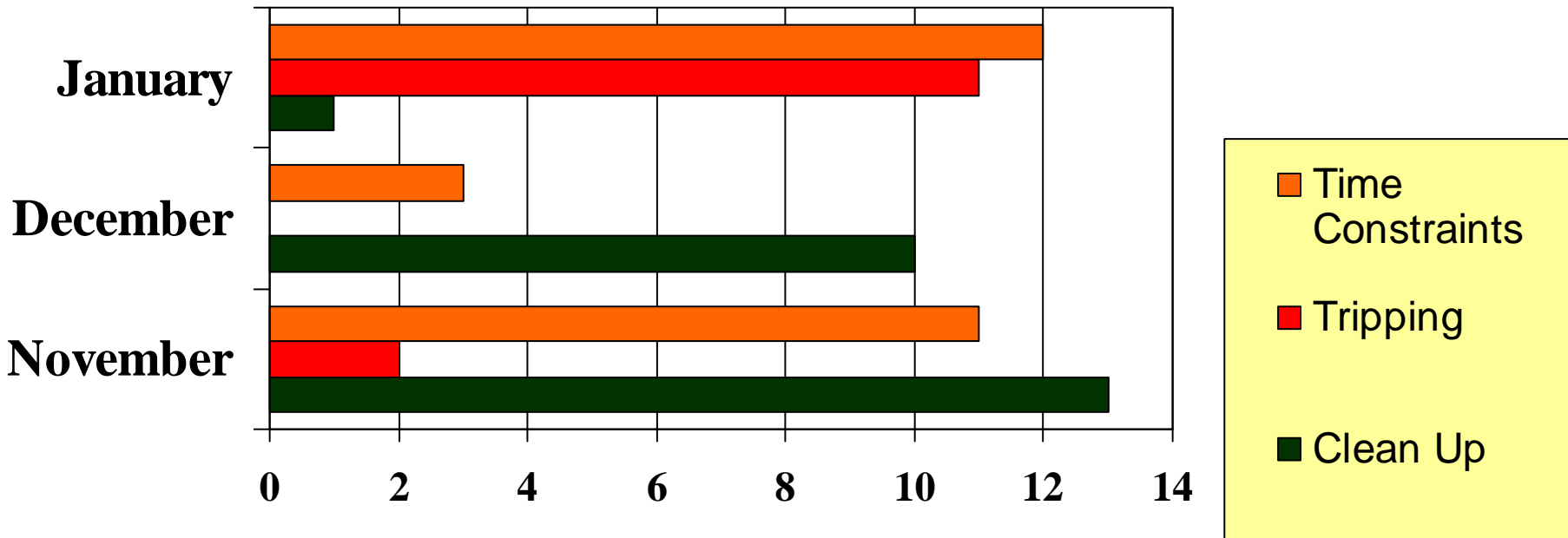
**2009 - #1 “at risk” Behaviour for January  
- Positions & Actions -**



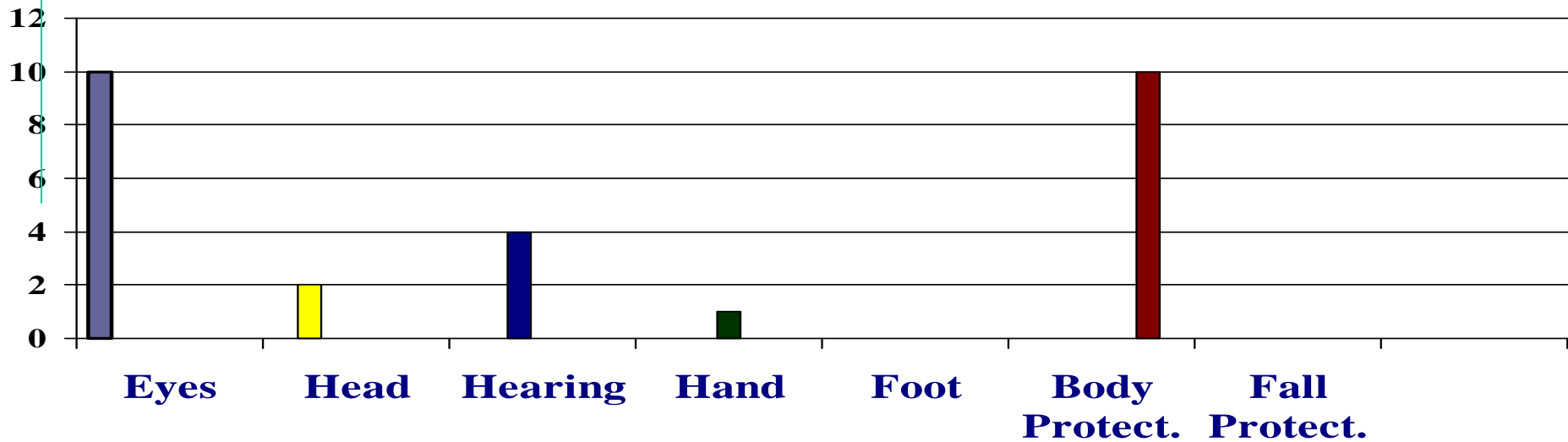
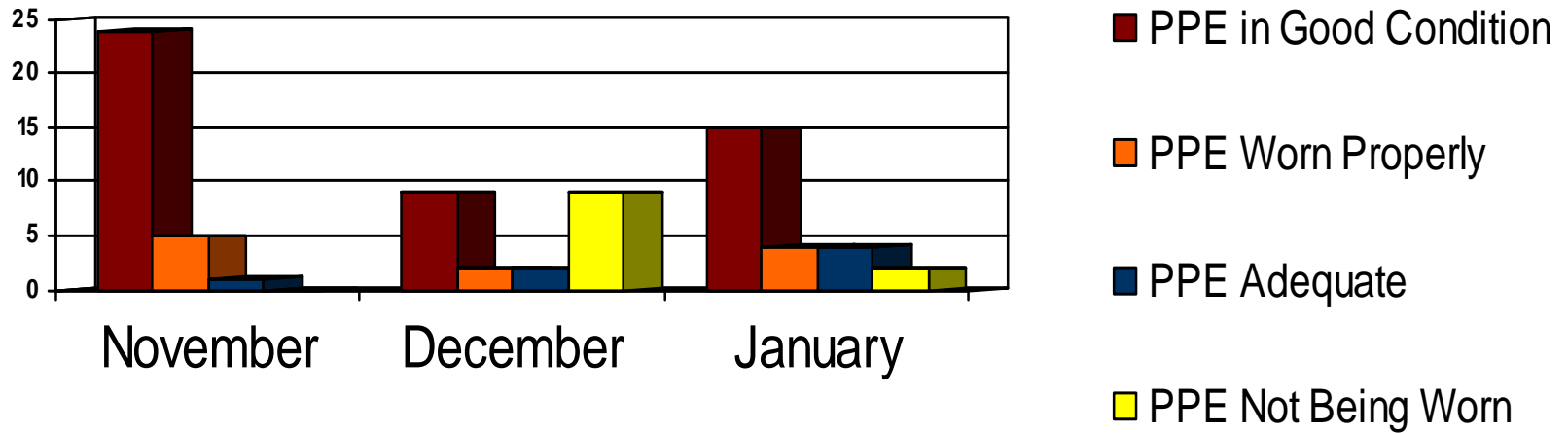
**2009 - #2 “at risk” Behaviour in January**  
**- Personal Protective Devices -**



# INDUSTRIAL EDUCATIONAL CO-OPERATIVE

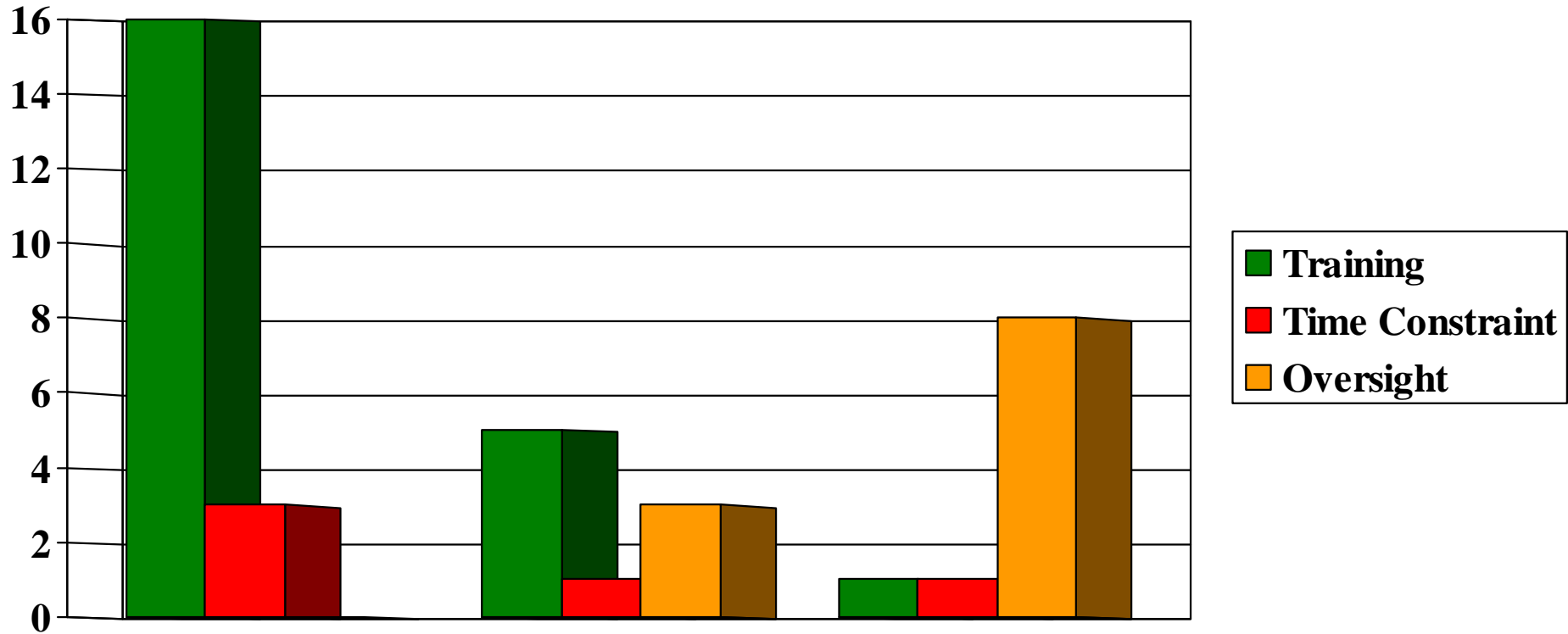


**2009 - #3 “at risk” Behaviour in January  
- Housekeeping -**



**2009 - #4 “at risk” Behaviour for January**

**-Personal Protective Equipment –**

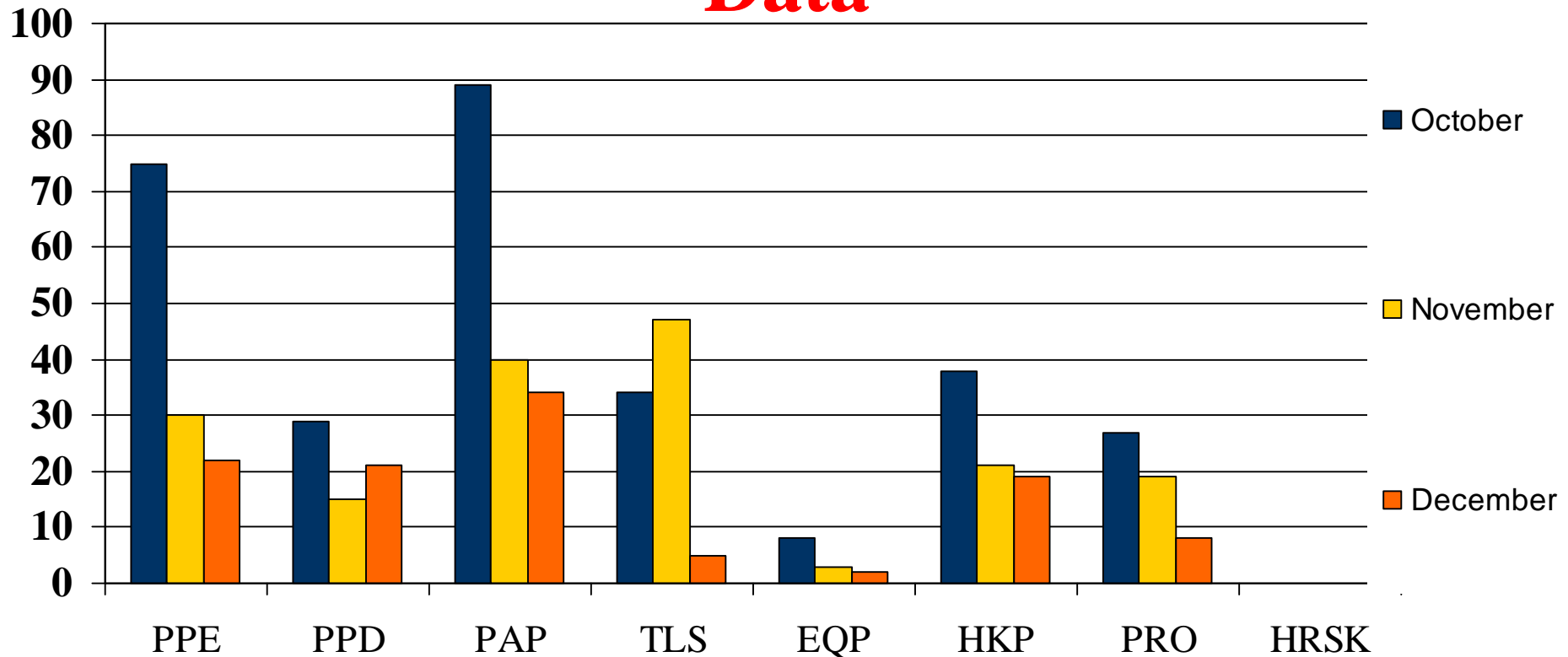


**2009 - #5 “at risk” Behaviour in January**

**- Procedures -**

# Observation Breakdown

## 2008 – 4<sup>th</sup> Quarter Contractor Submitted Data



2184 Observations done by  
228 Observers in 4<sup>th</sup> Quarter 2008!  
Don't forget to do your "TASC"