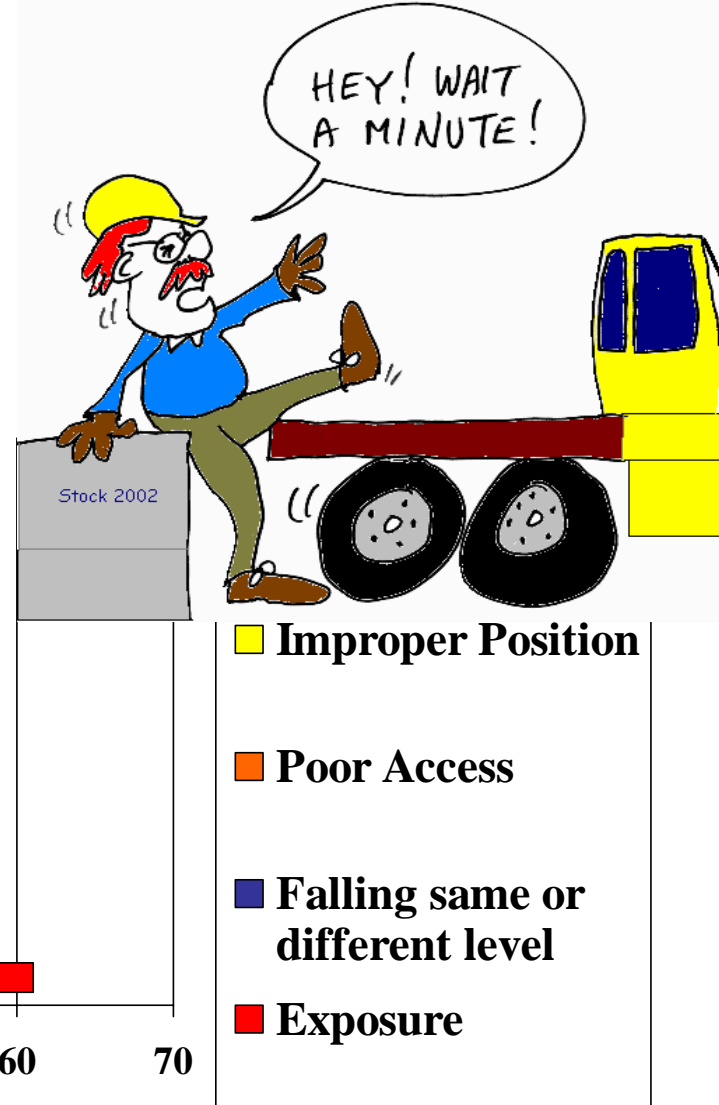
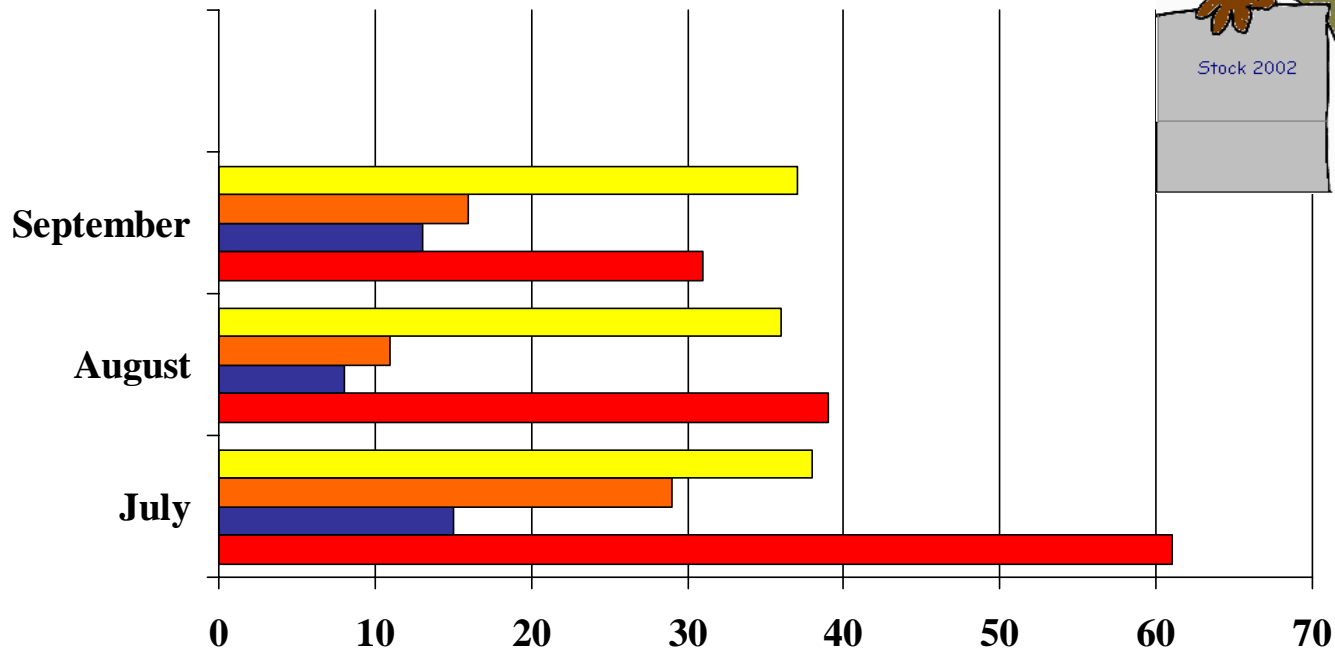


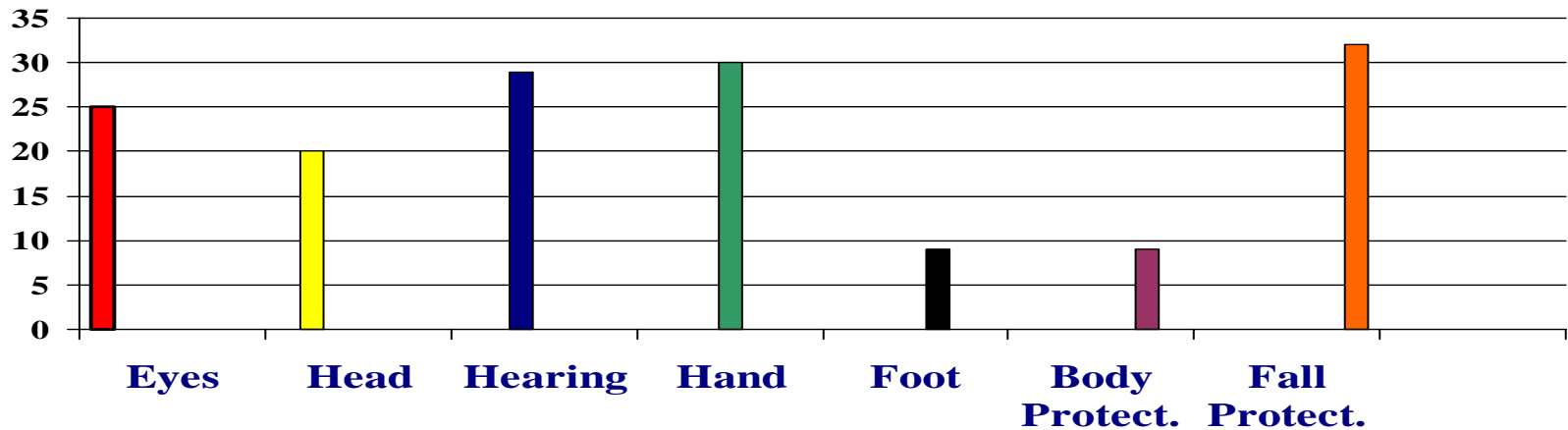
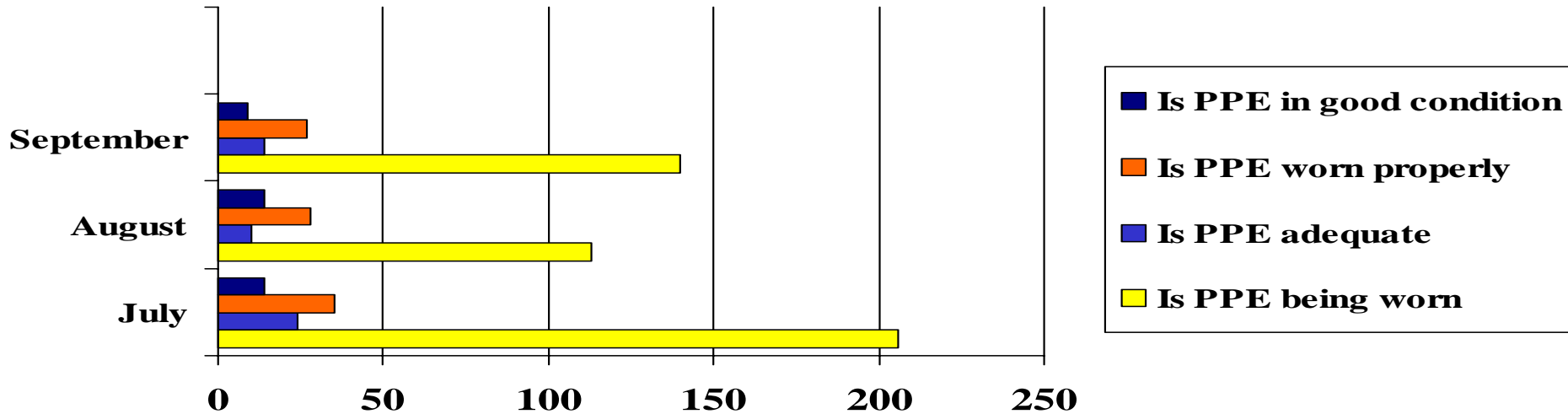
Number 1 “At Risk” Positions & Actions



• Improper positions can lead to incisions!

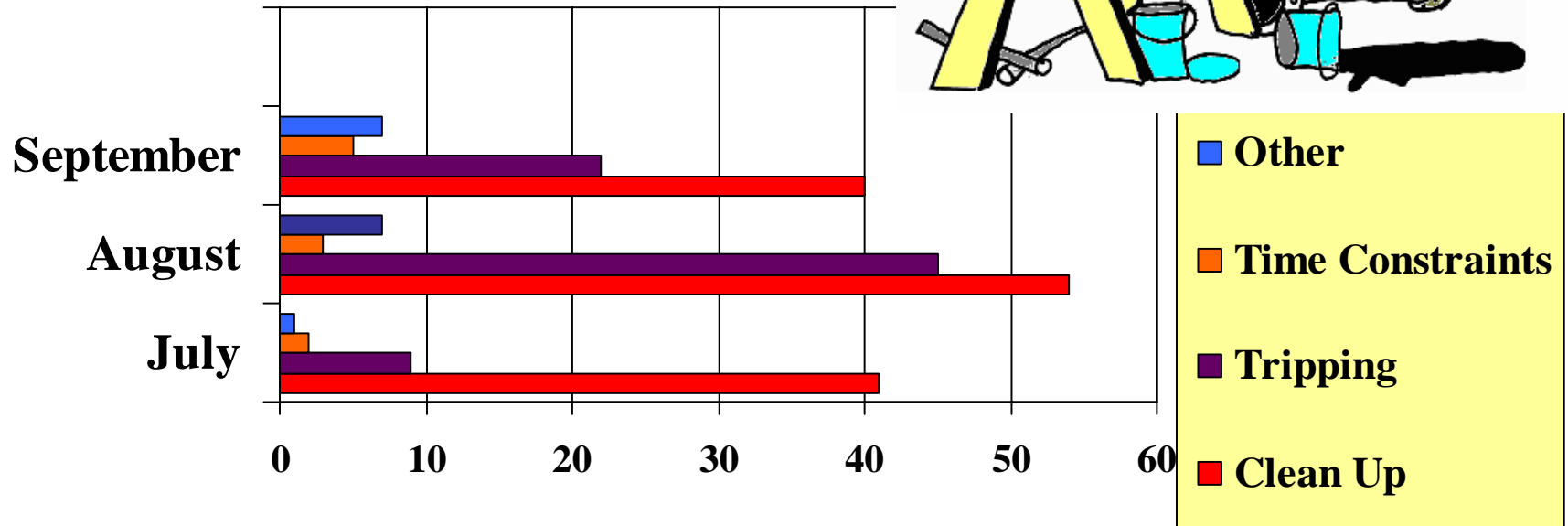
2 *At Risk Behaviour*

Personal Protective Equipment



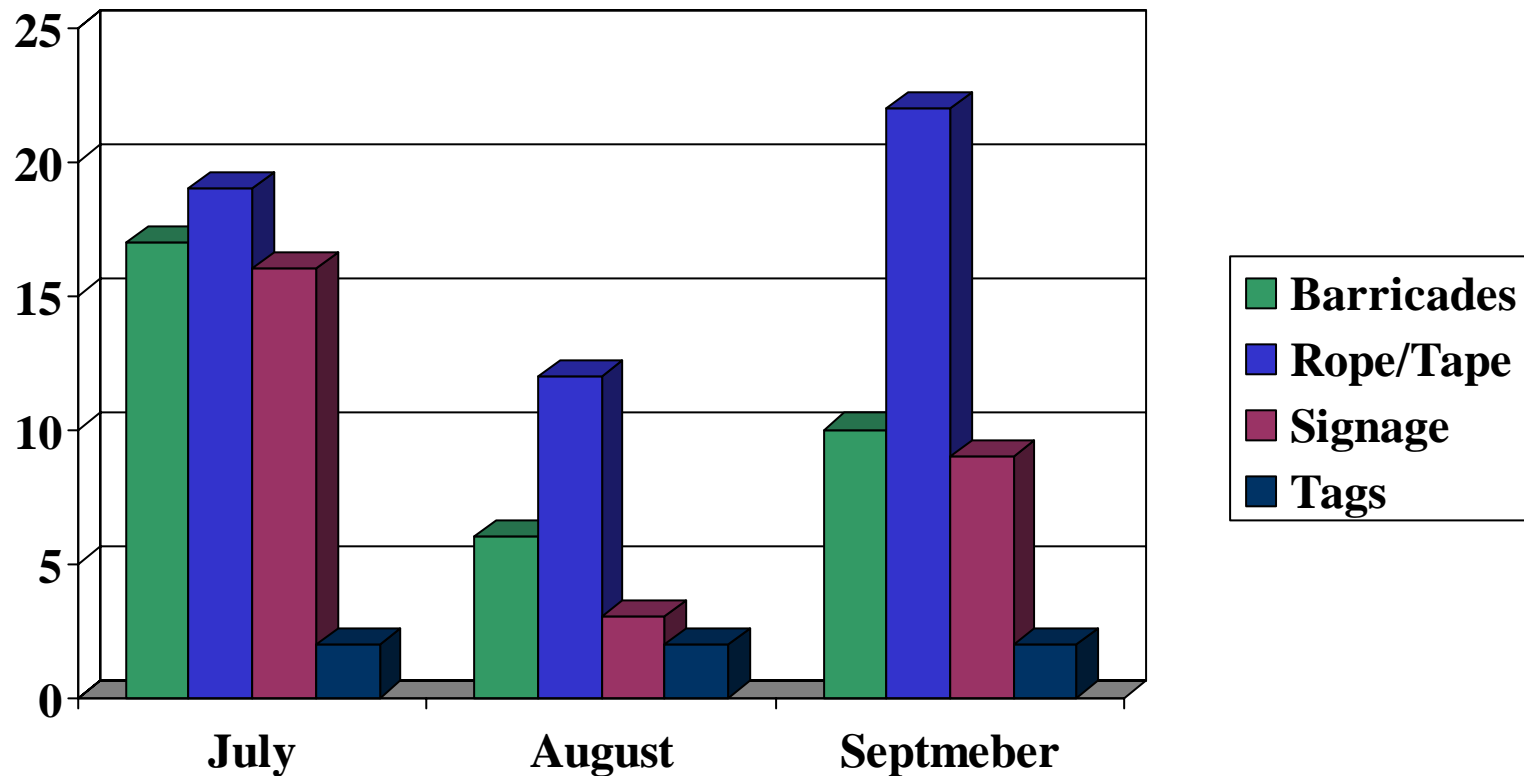
Fall protection not being worn!!

#3 “At Risk” is Housekeeping



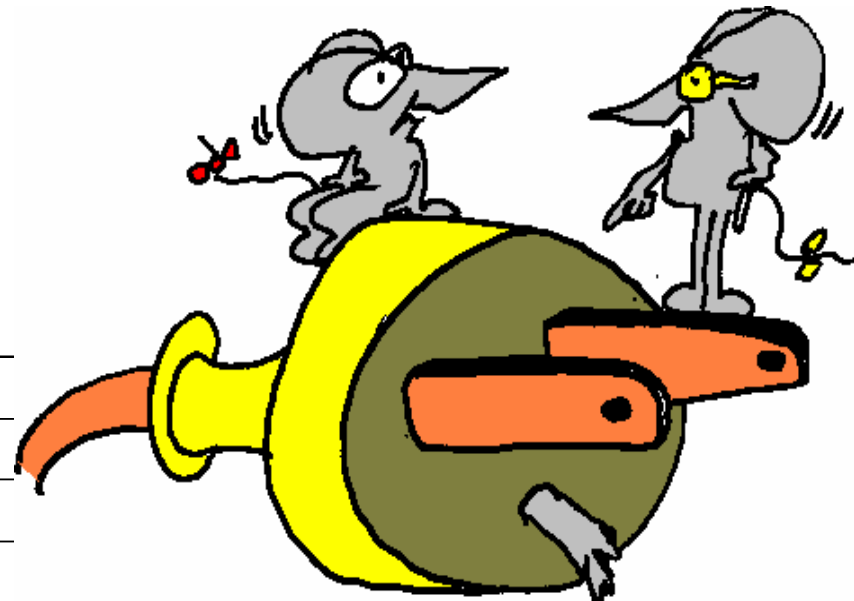
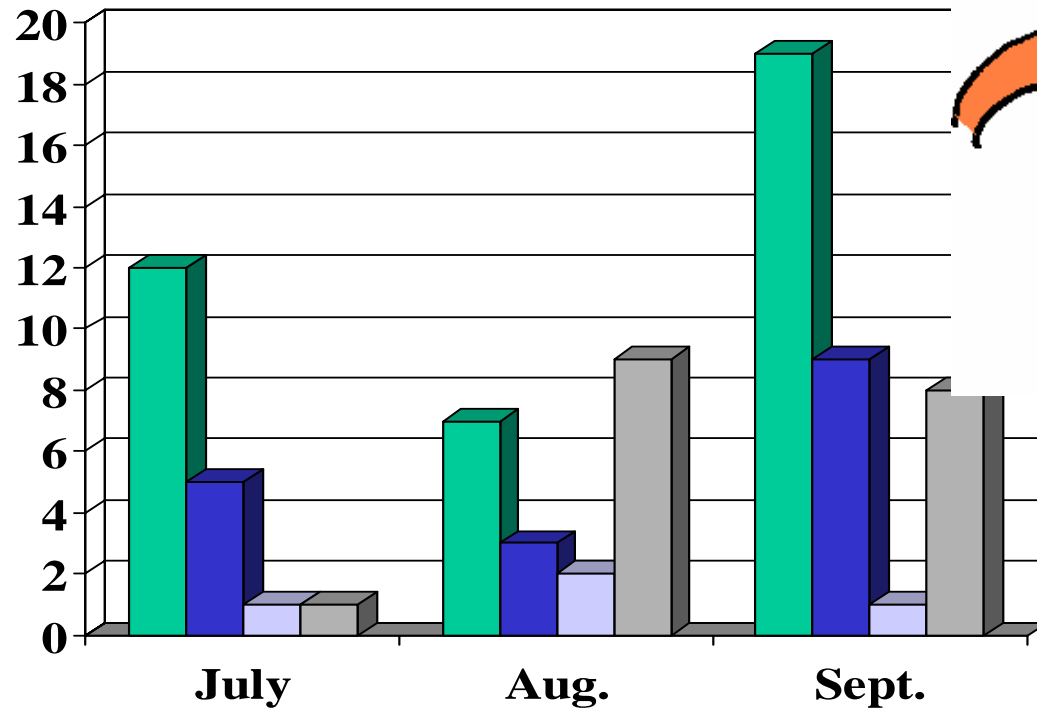
Don't be in a hurry to go on a trip!

Number 4 “At Risk” Behaviour: Personal Protective Devices



Rope or tape off areas for your protection!

Tools: #5 “At Risk” ...and on the Rise!

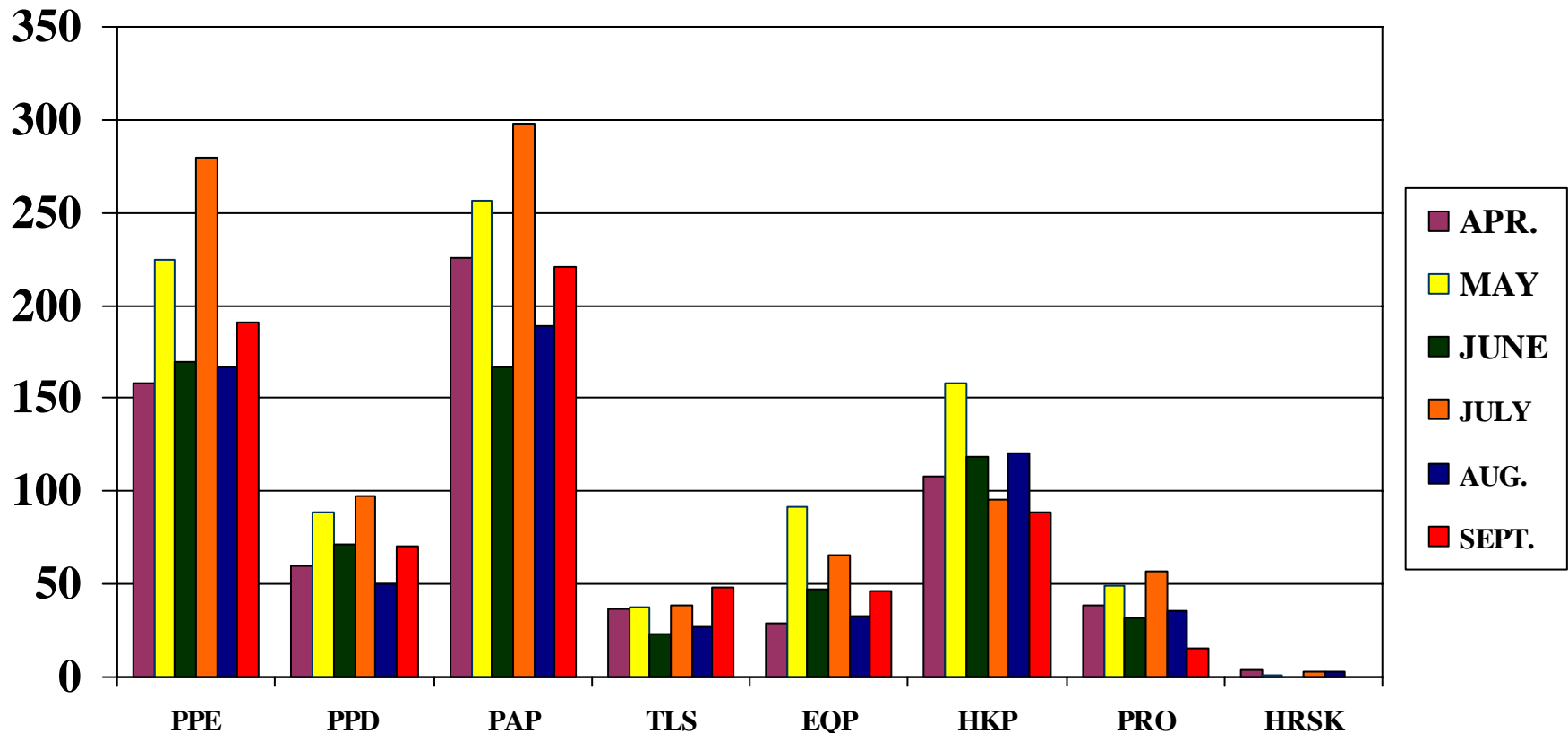


This plug is a definite "at risk"!

- Not In Working Order
- Wrong Tool
- Positioning
- Not Available

We can't work if our "Tools" don't work!

6 Month Observation Breakdown Contractor Submitted Data



**Observations this month were 1657 by 259 Observers!
Don't forget to do your "TASC"**