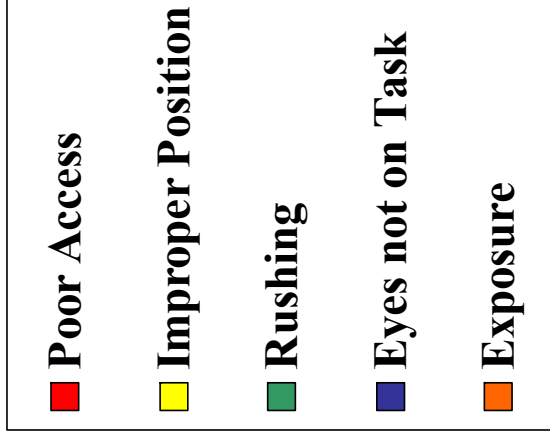
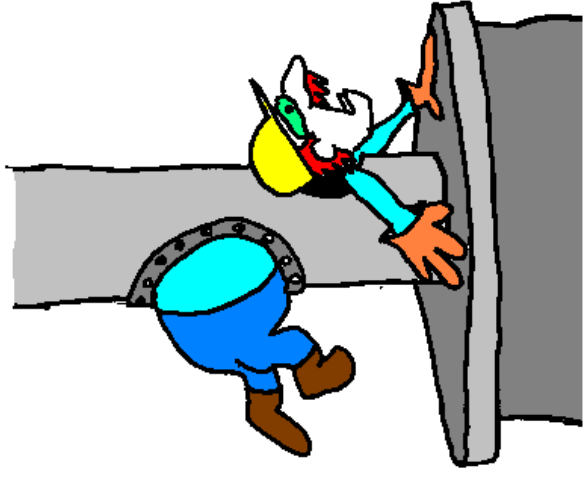
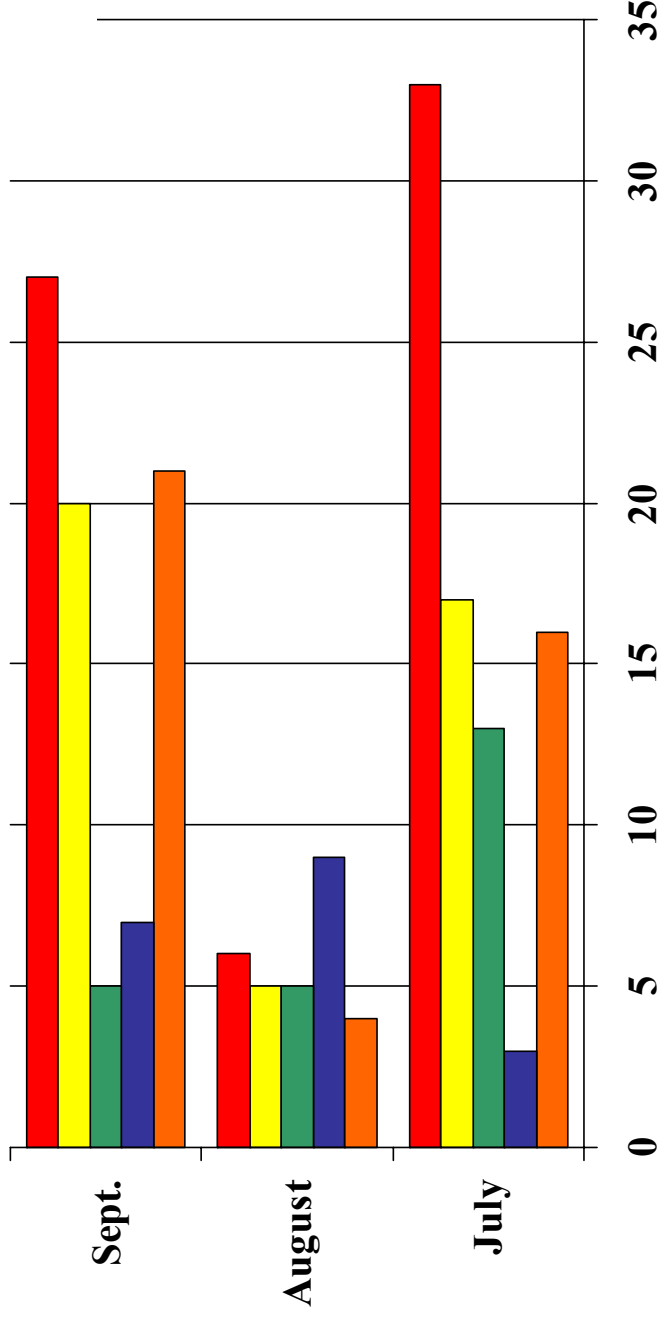


# Valley Wide September # 1 “At Risk” Behaviour

## Top 4 of 9

### Positions & Actions

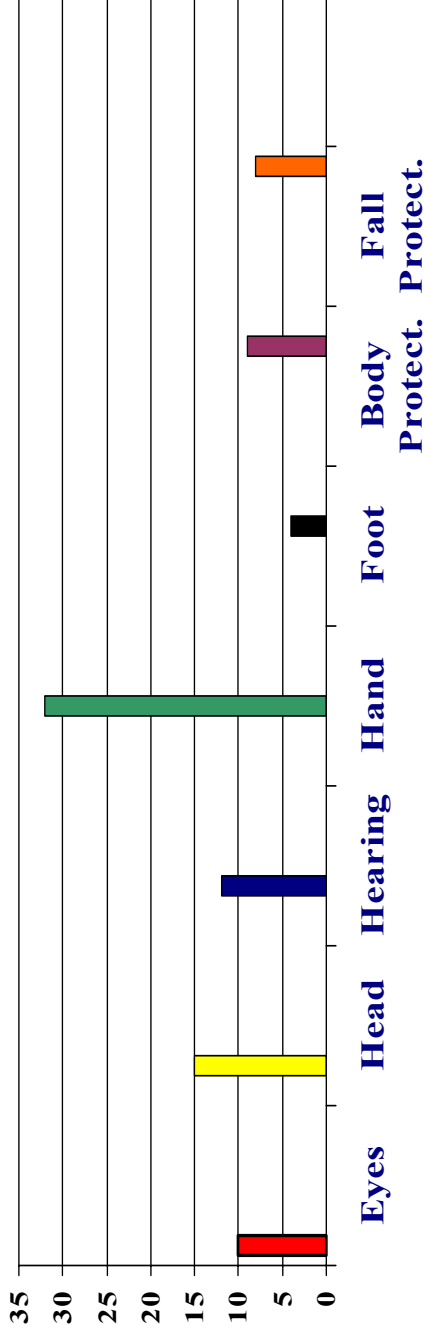
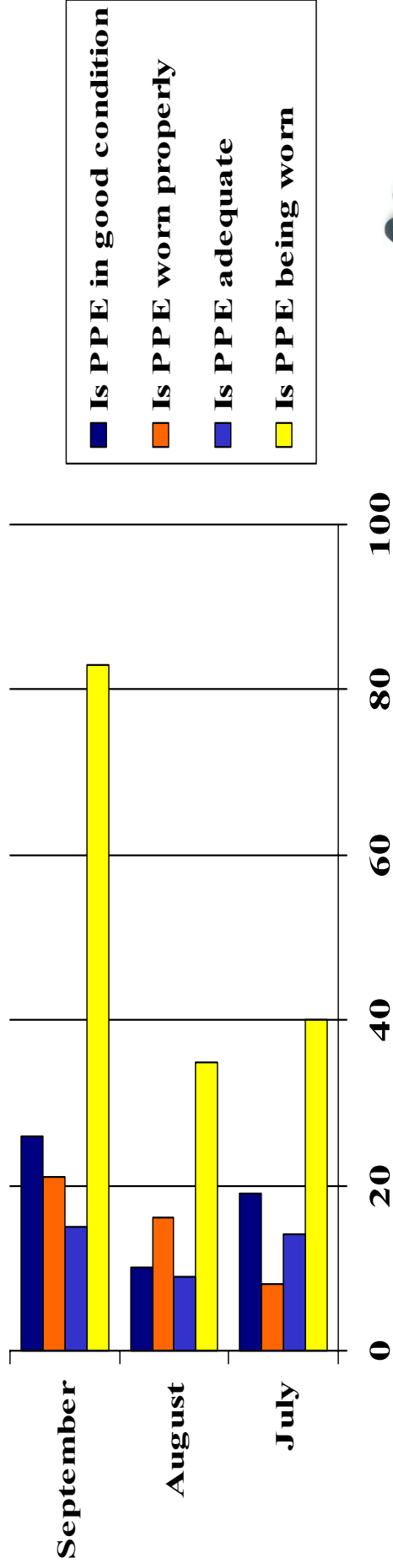


**POOR ACCESS A VERY HIGH  
“AT RISK” IN SEPTEMBER!**

# Valley Wide September 2004

## #2 \*At Risk Behaviour\*

### Personal Protective Equipment

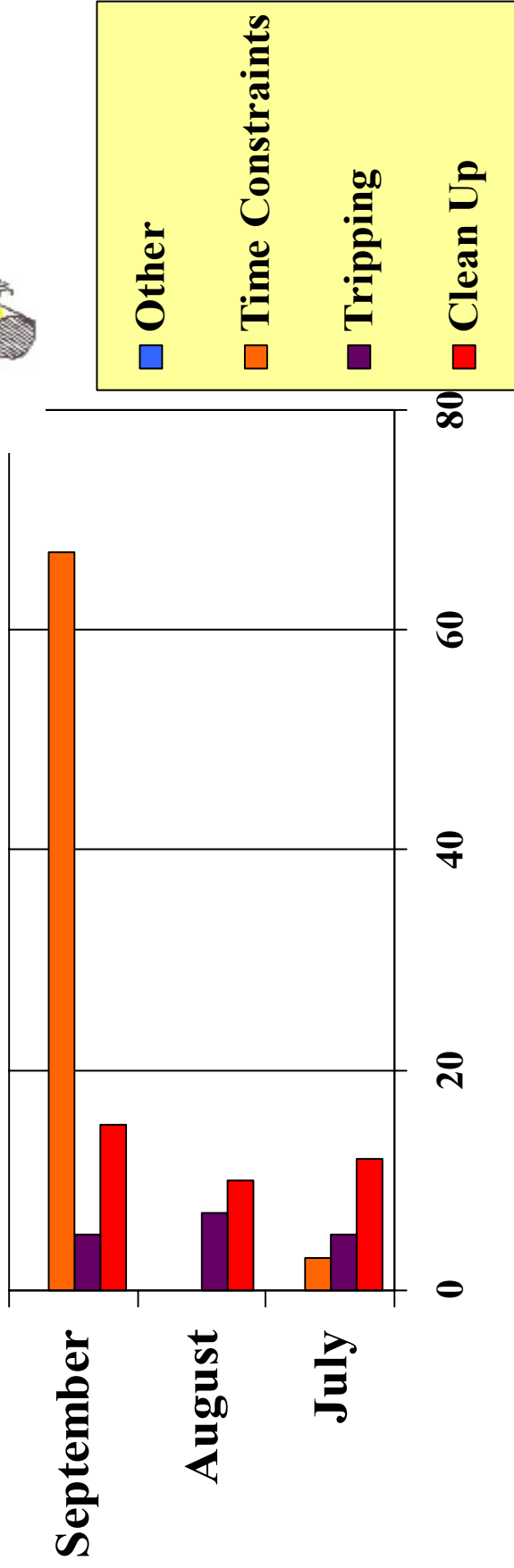


**HAND PROTECTION NOT BEING WORN!**

# Valley Wide September 200

## #3 “At Risk” Behaviour

# Housekeeping

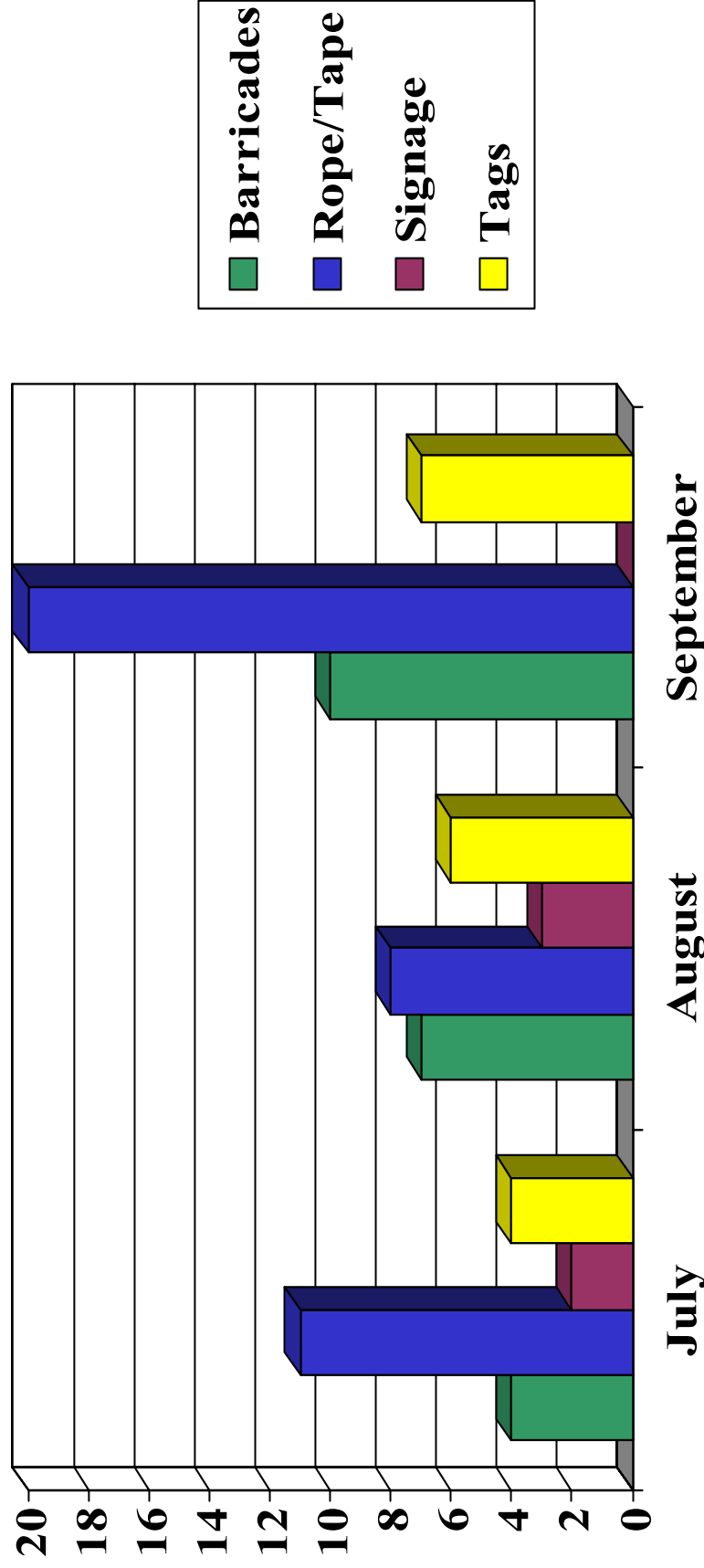


**MAKING TIME FOR CLEAN UP!**

# September 2004

## #4 "At Risk"

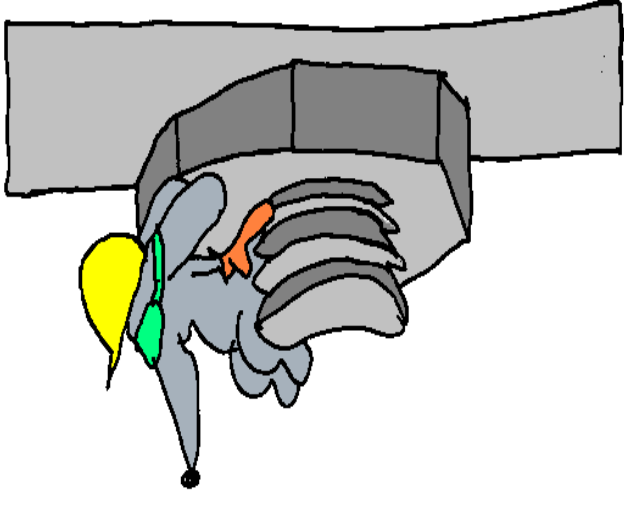
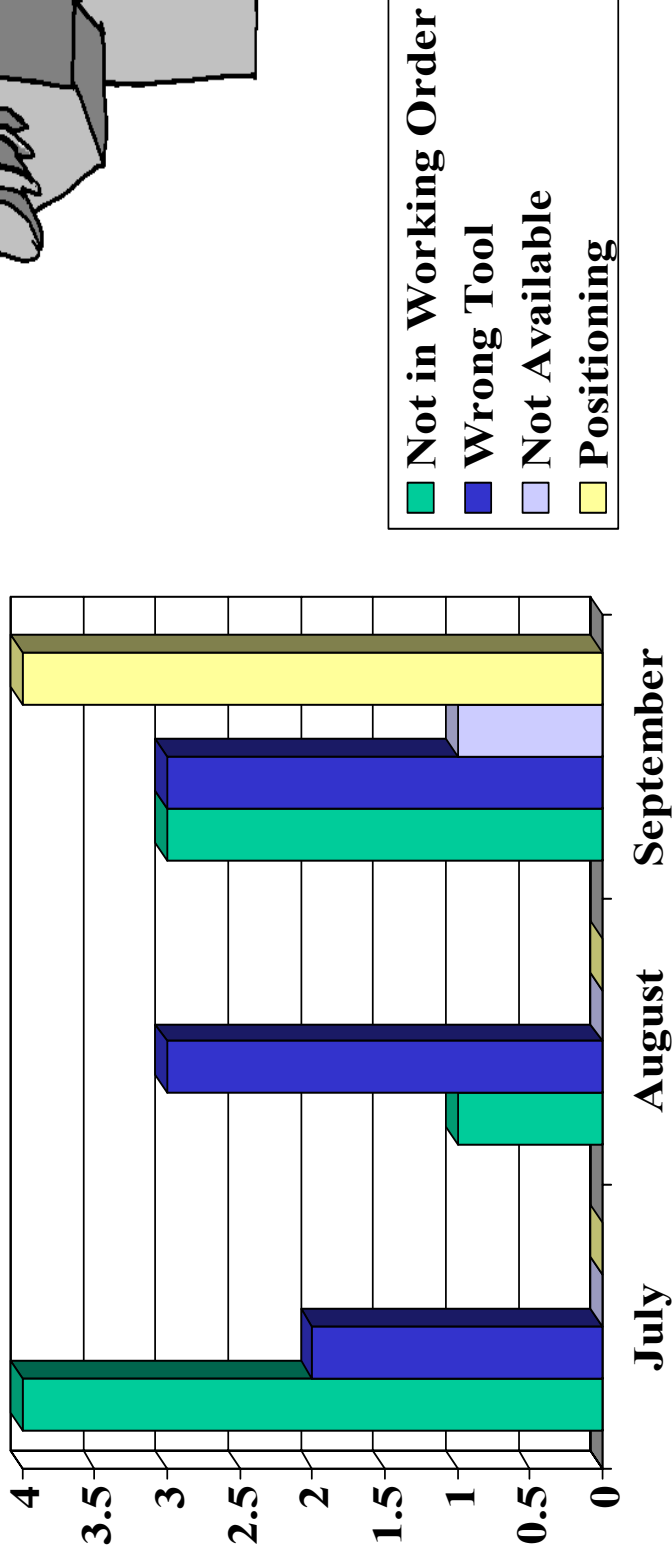
### Personal Protective Devices



**ROPE & TAPE were an "AT RISK" in SEPTEMBER!**

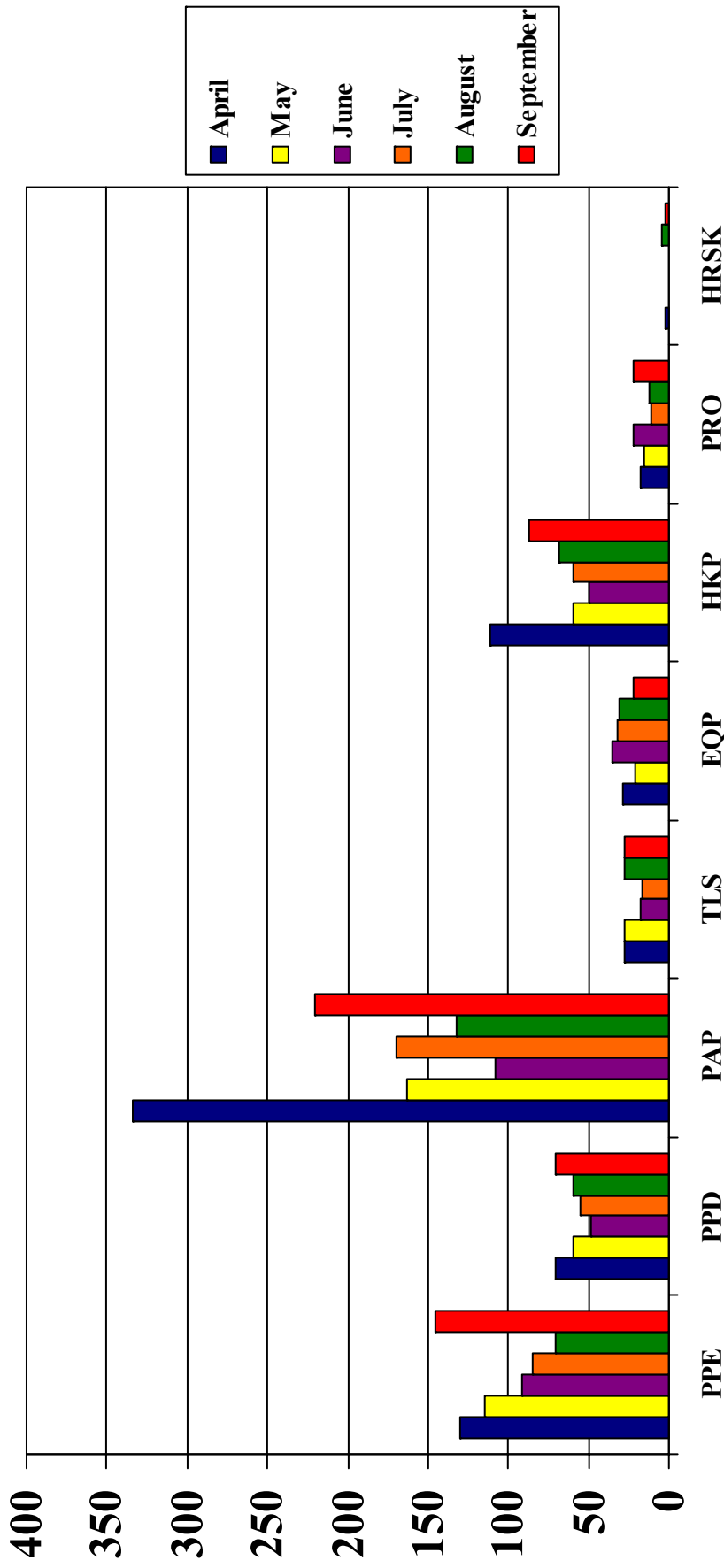
# Valley Wide Sept. 2004

## #5 At Risk Behaviour Tools



**POSITIONING IS # 1,  
(WRONG TOOLS AND TOOLS NOT AVAILABLE  
ARE TIED FOR 2ND PLACE!)**

# 6 Month Observation Breakdown Contractor Submitted Data



**1854 Observations this month by 175 Observers!**  
**Don't forget to do your "TASC"**