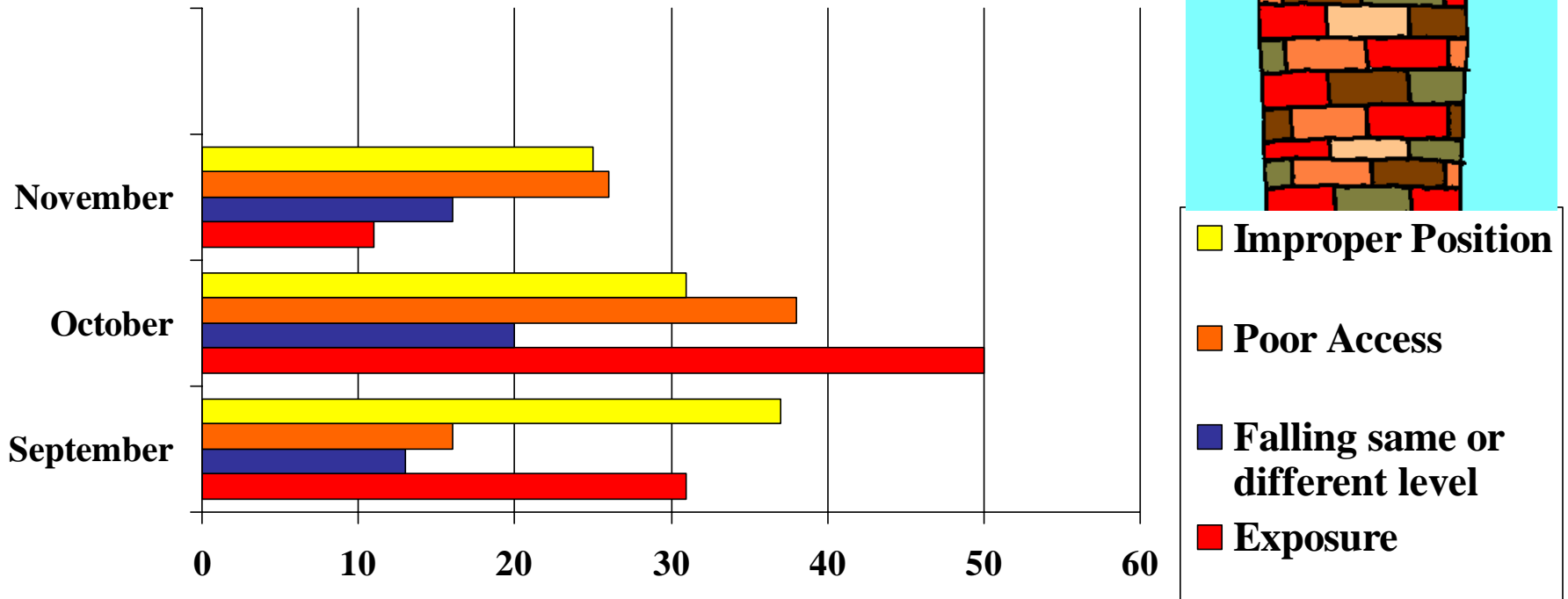


Valley Wide November 2002

1 “At Risk”

Positions & Actions

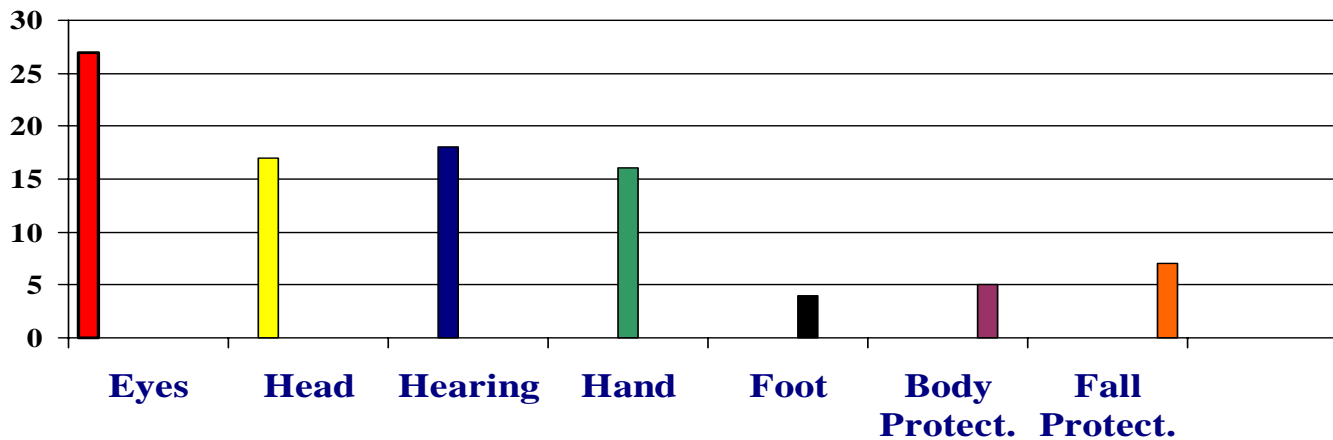
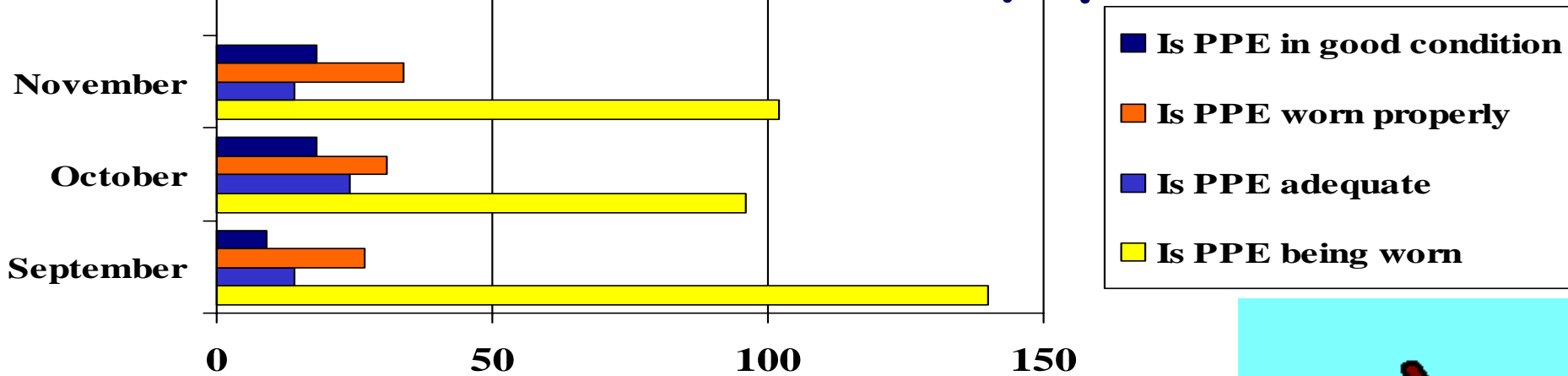


• Positions and actions can lead to impaction!

Valley Wide November 2002

#2 *At Risk Behaviour*

Personal Protective Equipment

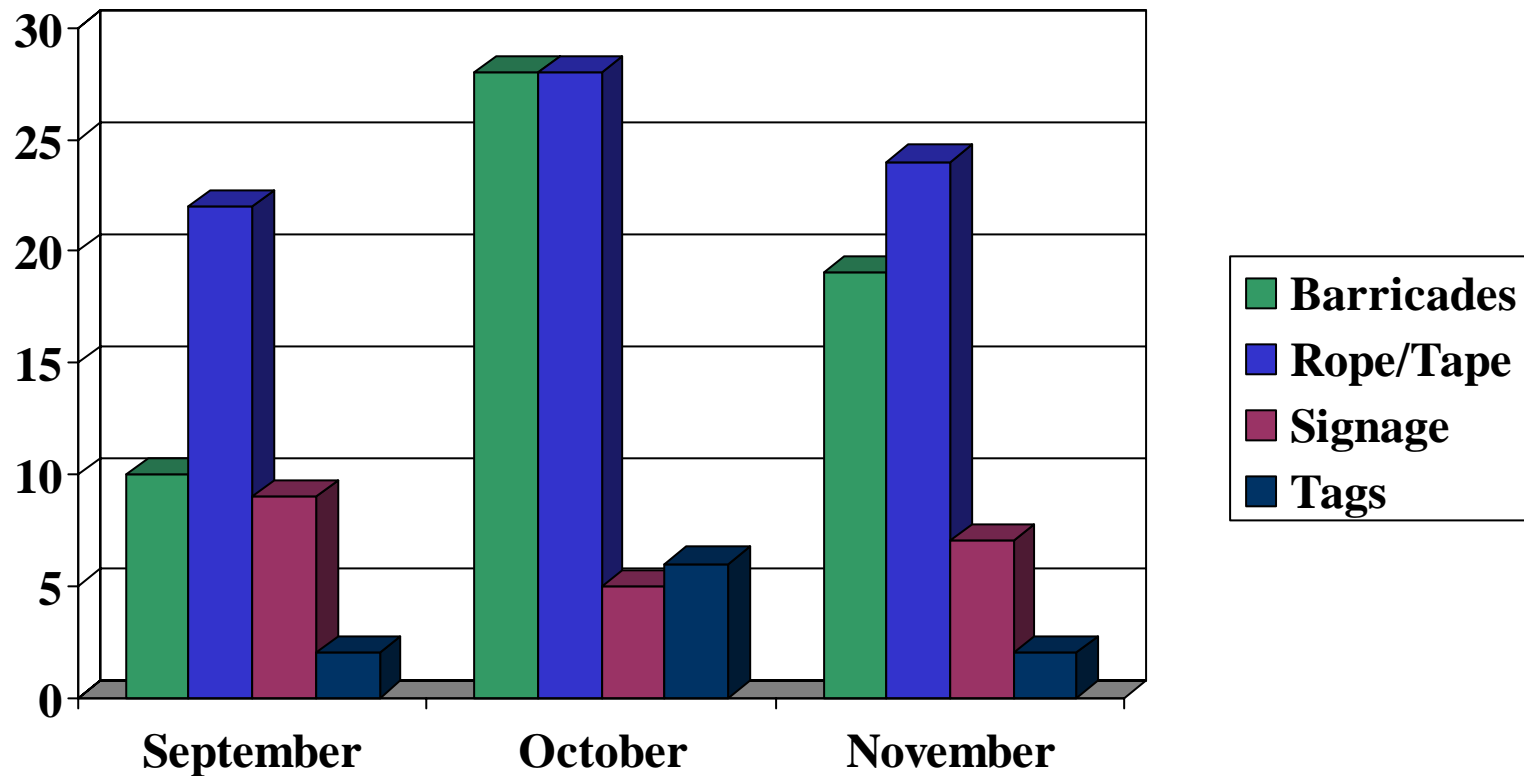


Oh deer, I forgot my safety glasses!

Valley Wide November 2002

3 “At Risk” Behaviour:

Personal Protective Devices

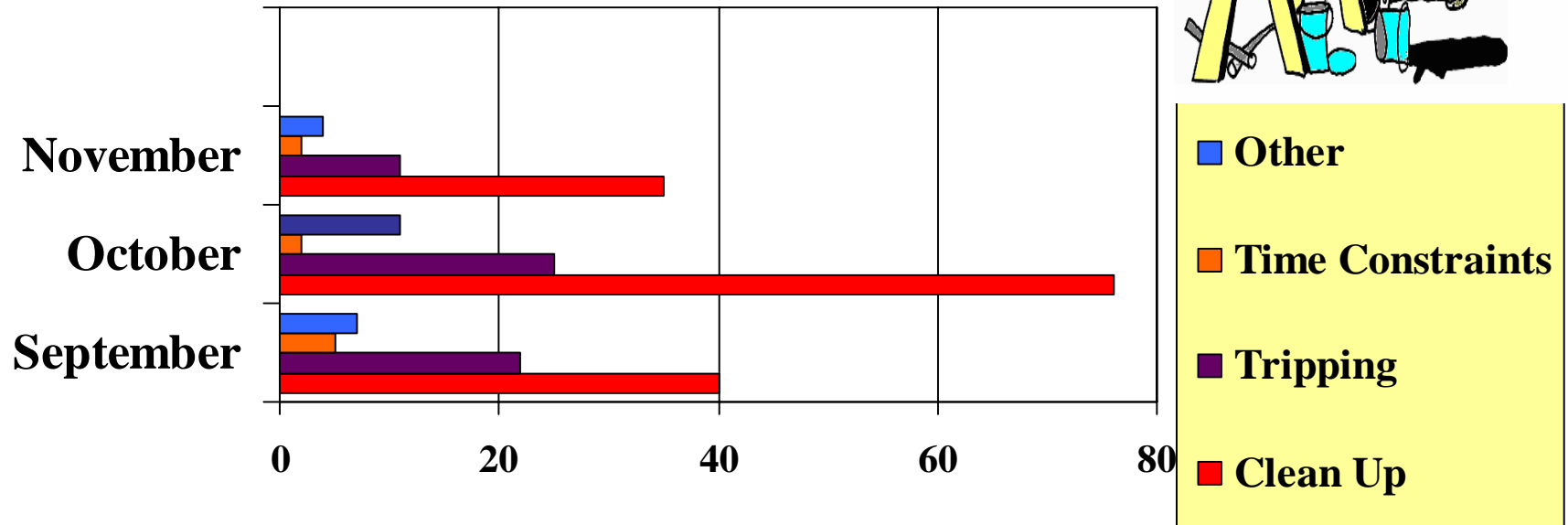


Can you help us reverse this trend?

Valley Wide November 2002

#4 “At Risk” is

Housekeeping

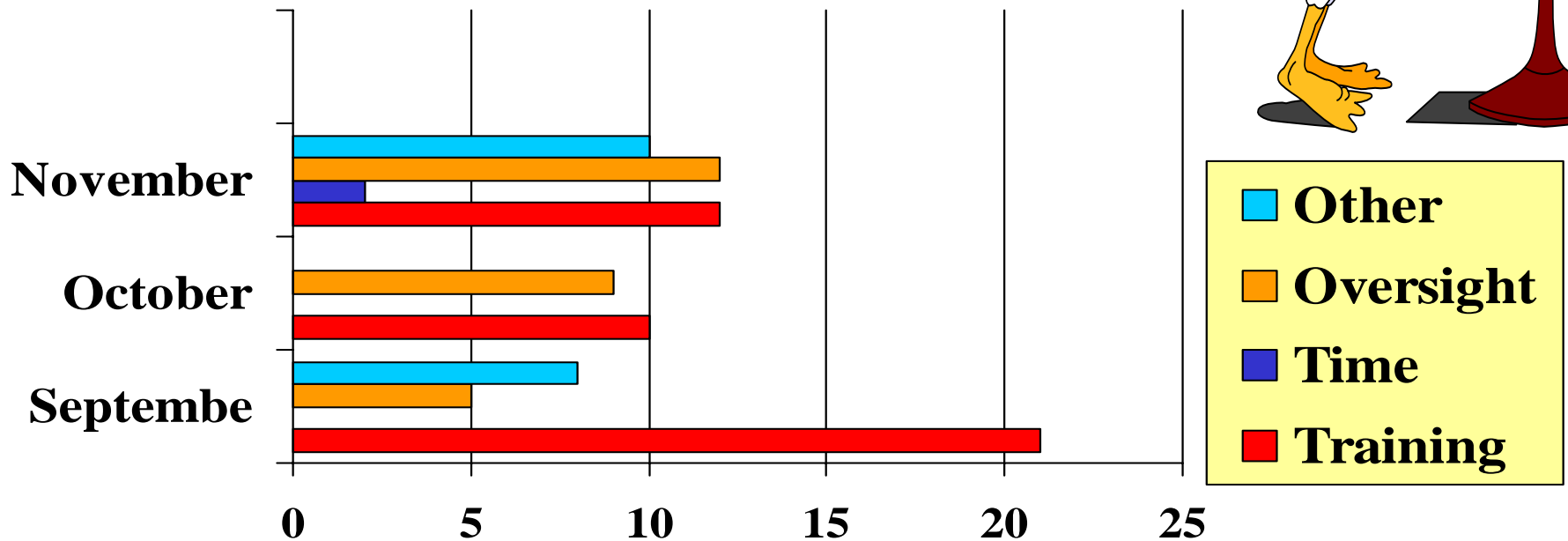


As a risk, Clean Up keeps going up!

Valley Wide November 2002

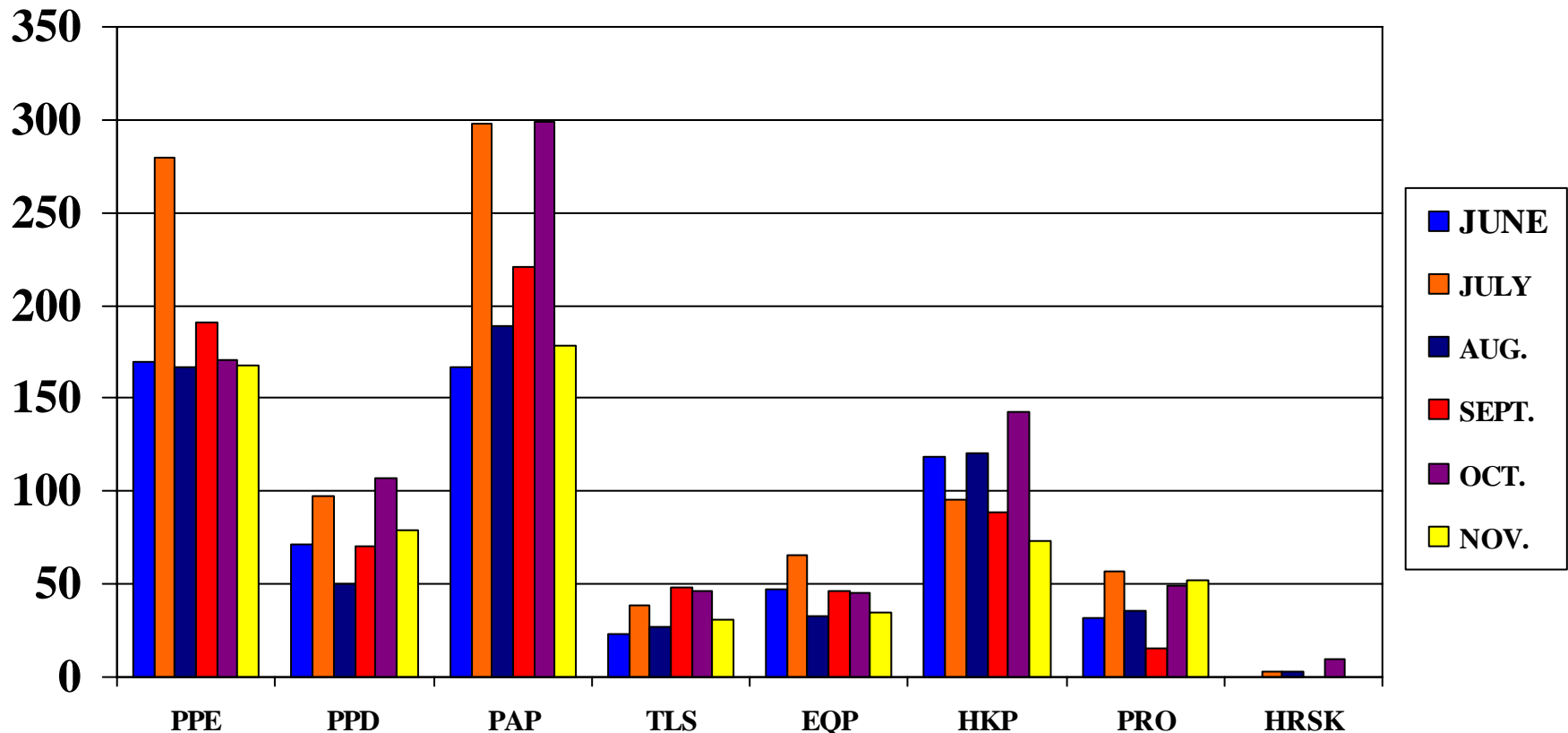
#5 AT RISK BEHAVIOUR

* Procedures *



- Can't remember? Don't know how?
- Better get that training NOW!

6 Month Observation Breakdown Contractor Submitted Data



**Observations this month were 2076 by 273 Observers!
Don't forget to do your "TASC"**