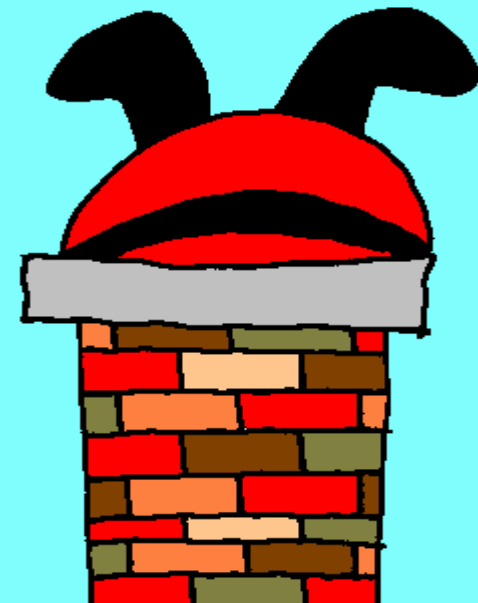
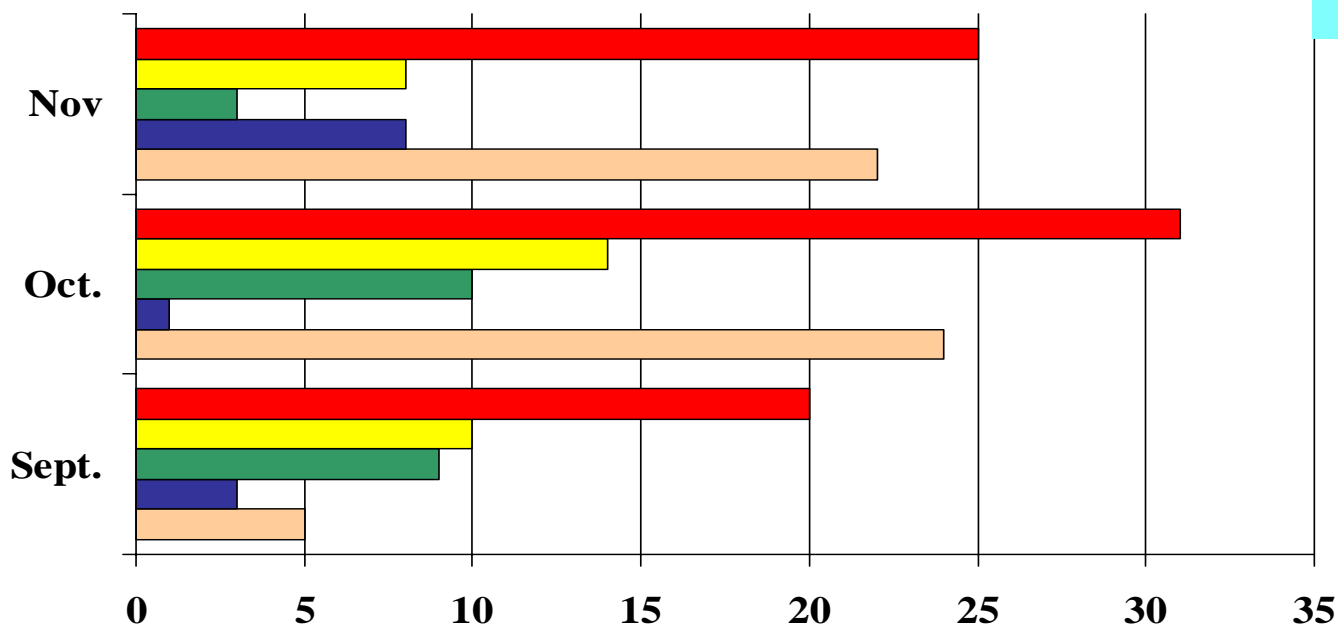


# # 1 “At Risk” Behaviour

## Top 4 of 9

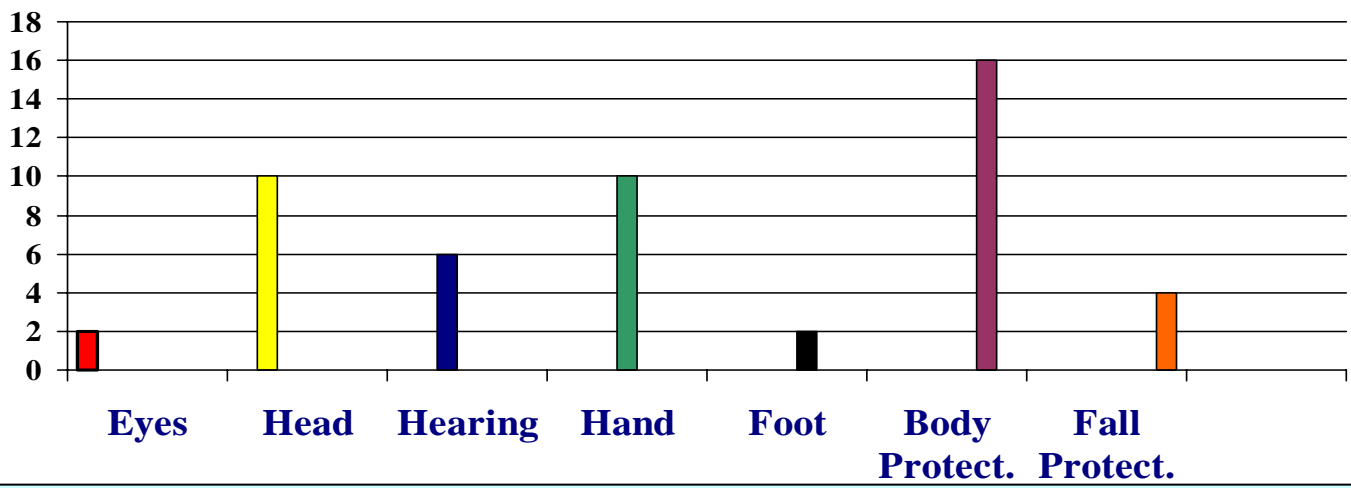
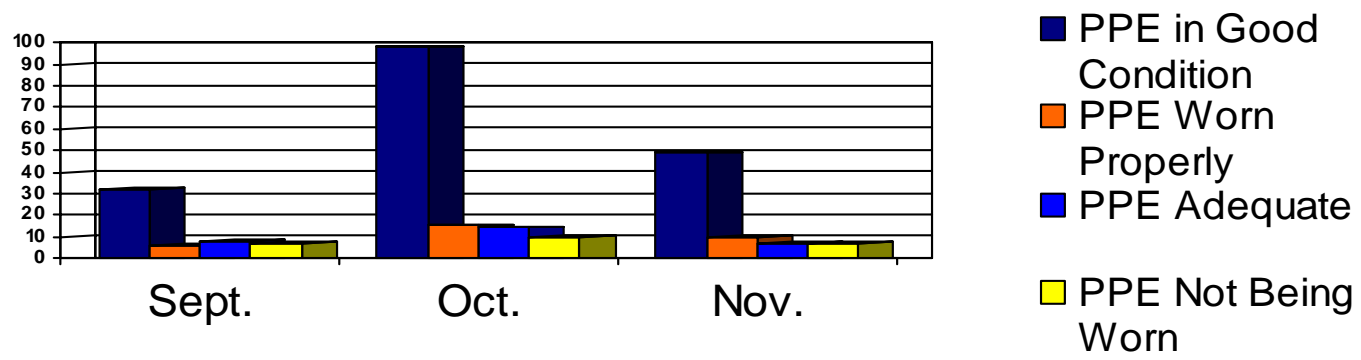
### Position and Action



- Poor Access
- Improper Position
- Rushing
- Slippery Surface
- Exposure

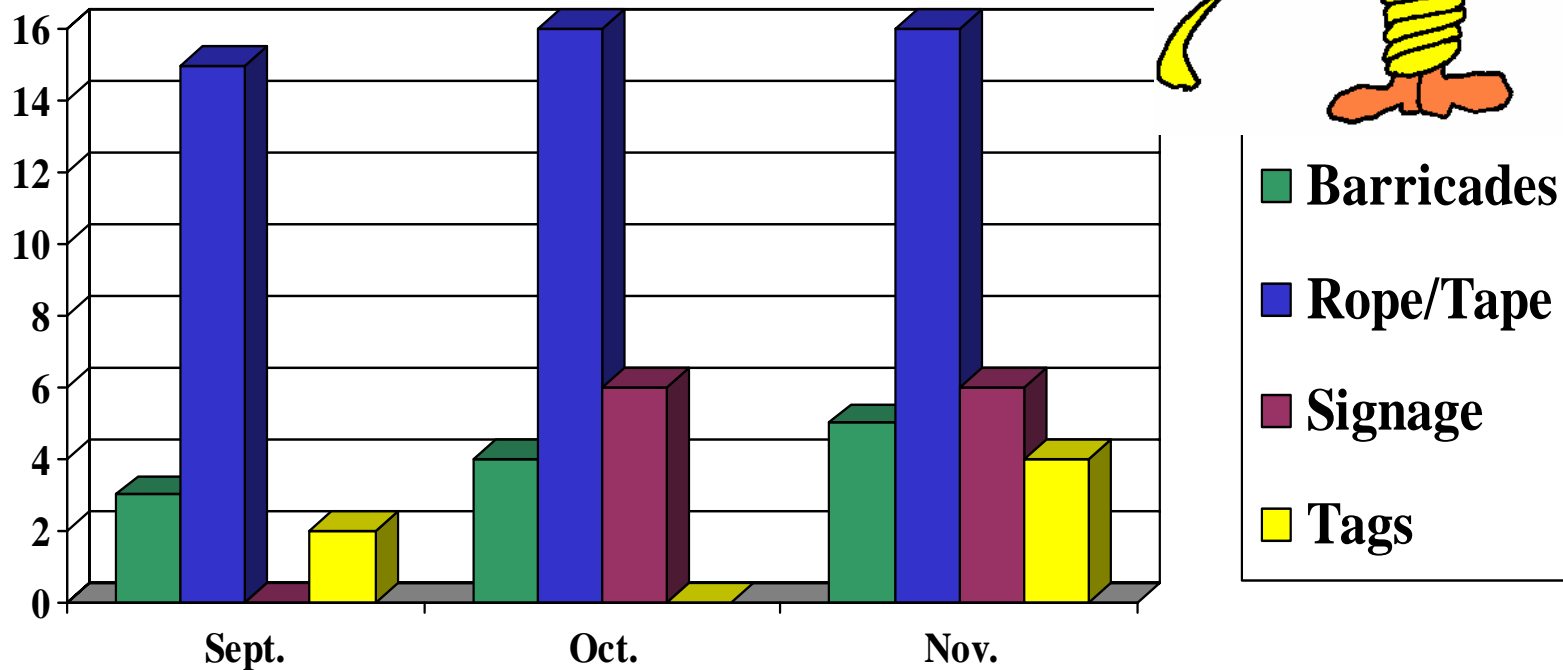
Poor Access was the highest  
“AT RISK” in November!

# #2 \*At Risk Behaviour\* Personal Protective Equipment



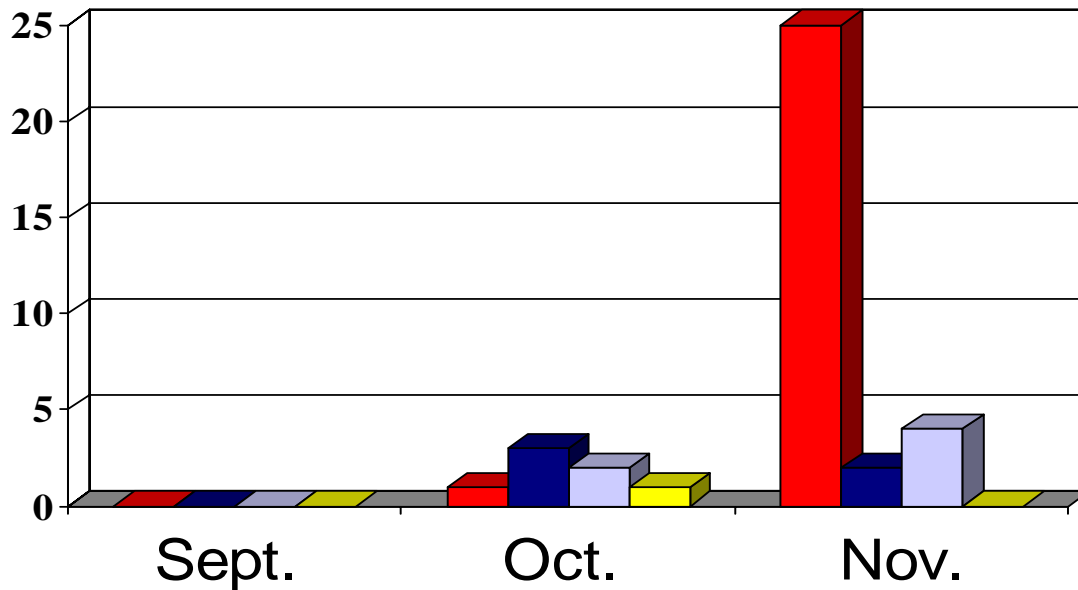
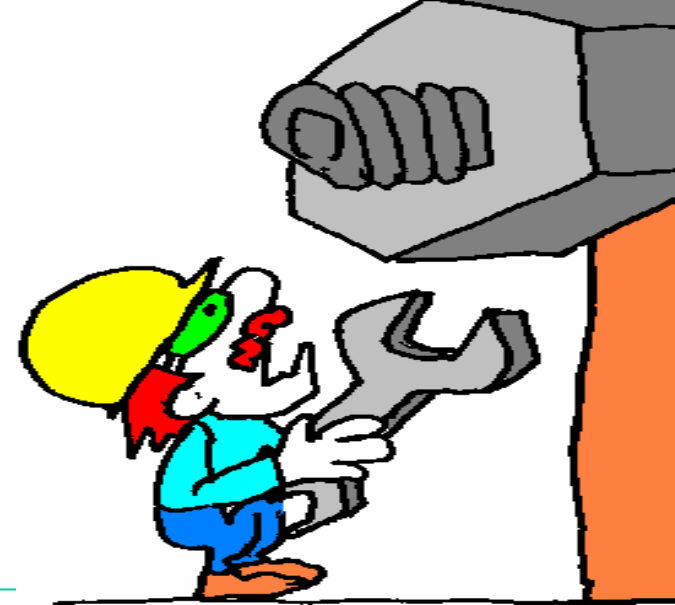
**Santa's Wearing Nomex This Year!**

# TIE for #3 “At Risk” Personal Protective Devices



**ROPE & TAPE were an “AT RISK”  
for February through November!**

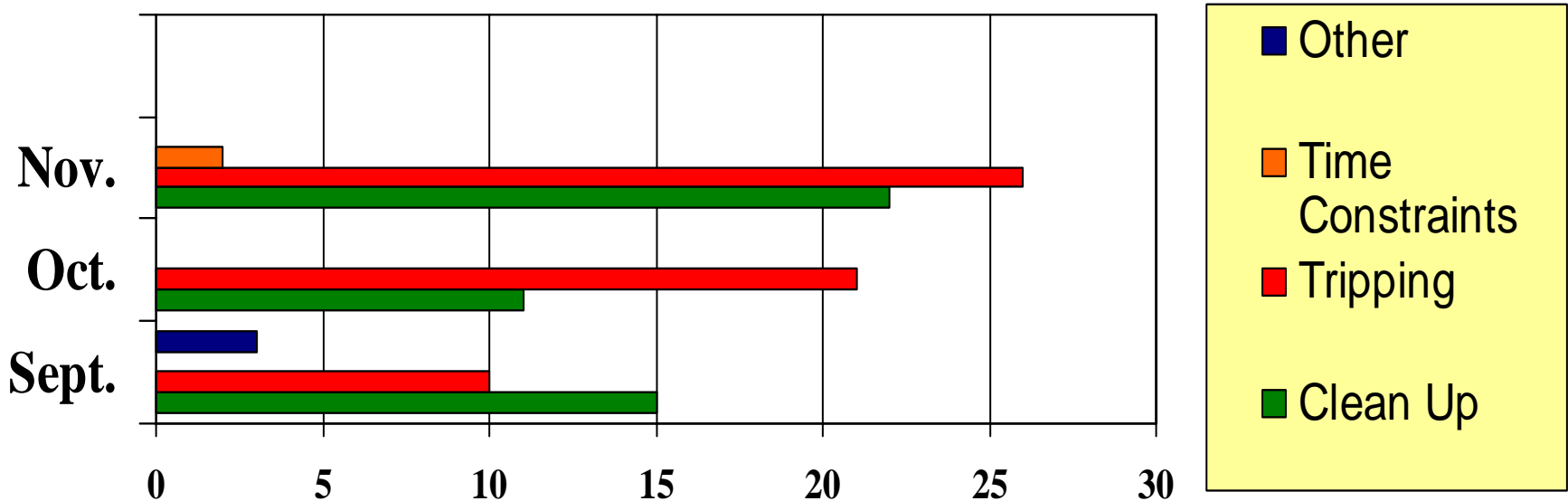
# TIE for #3 At Risk Behaviour **EQUIPMENT**



- INADEQUATE
- UNSAFE HANDLING
- NOT AVAILABLE
- FAULTY

**Inadequate Equipment has gone through the Roof!!!**

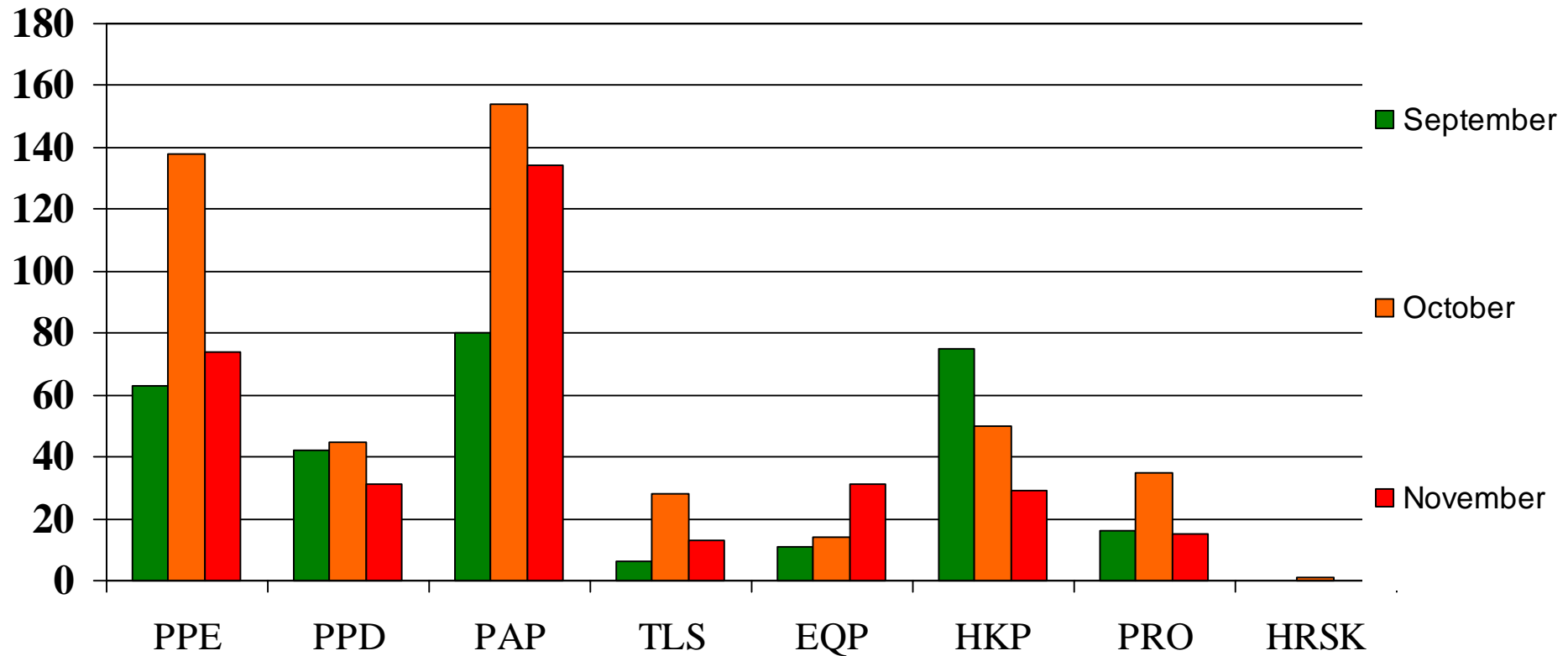
# #4 “At Risk” Behaviour Housekeeping



**MAKING TIME FOR CLEAN UP  
KEEPS US SAFE FROM TRIPPING HAZARDS**

# 3 Month Observation Breakdown

## 2005 Contractor Submitted Data



1398 Observations last year by 375 Observers!  
Don't forget to do your "TASC"