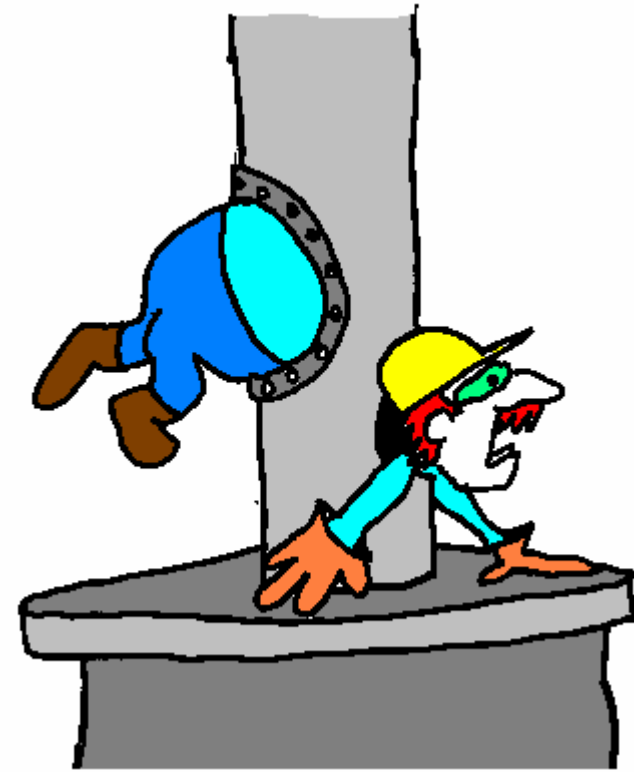
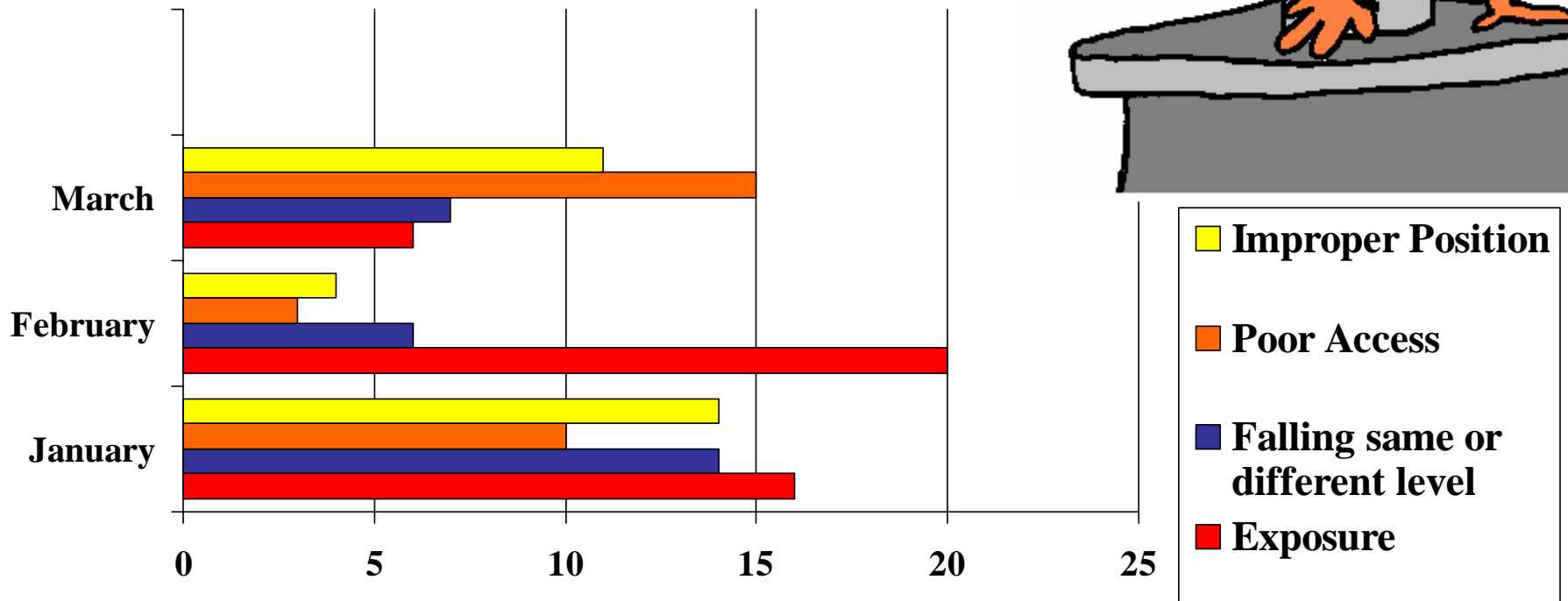


# Valley Wide March 2003

## # 1 “At Risk”

### Positions & Actions

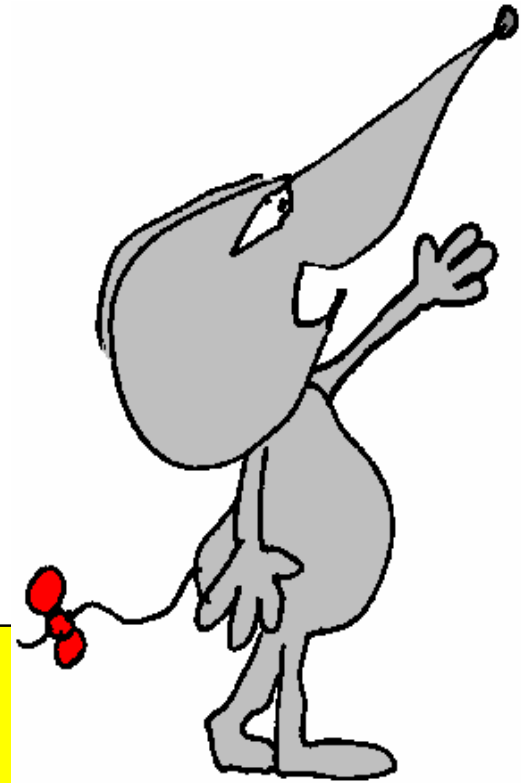
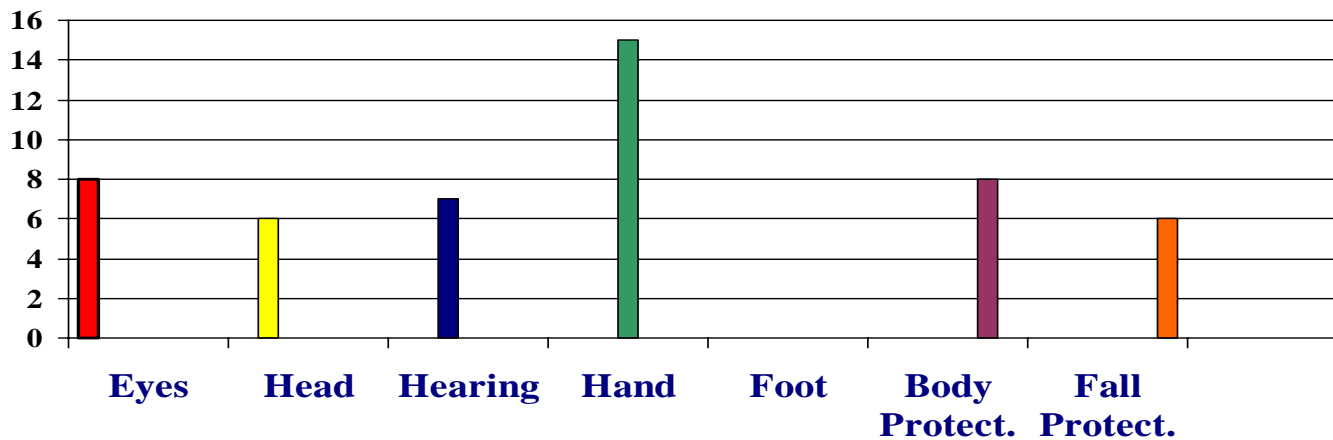
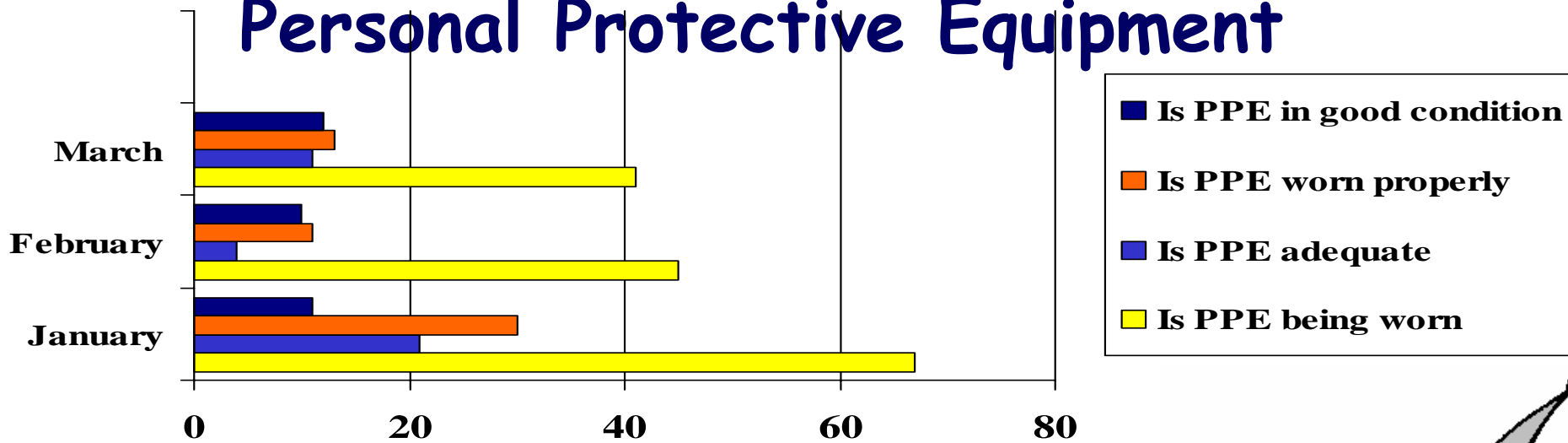


• “Poor Access” was high this month!

# Valley Wide March 2003

## #2 \*At Risk Behaviour\*

### Personal Protective Equipment

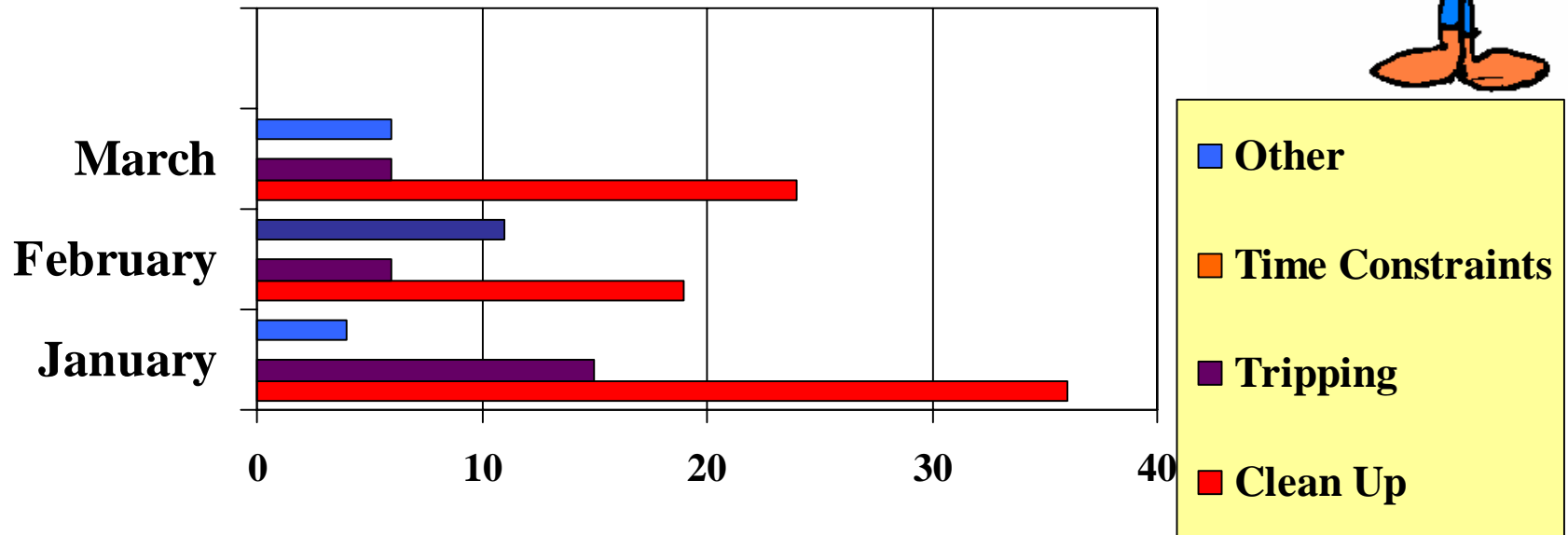


I'm a cartoon...I NEED a three fingered glove!

# Valley Wide March 2003

#3 “At Risk” is

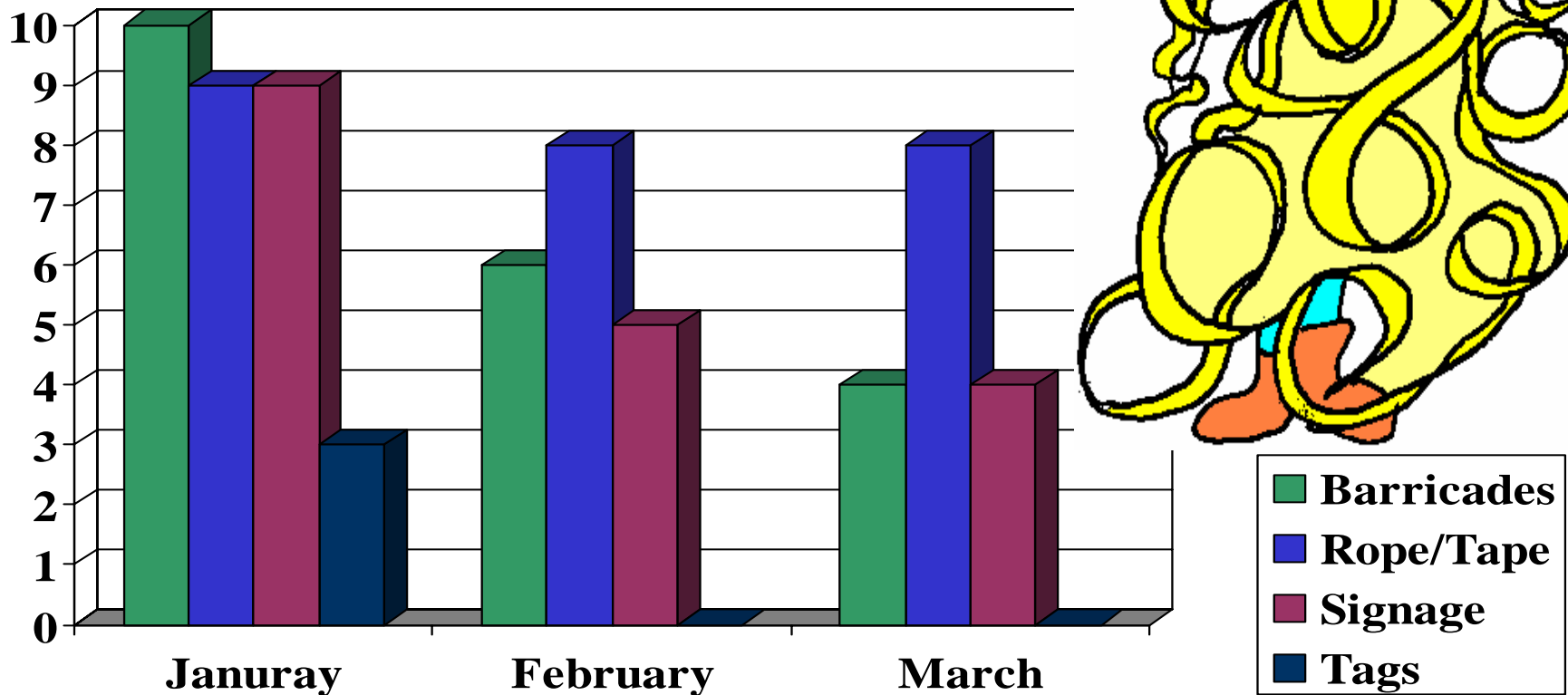
**Housekeeping**



Housekeeping has gone to the...dogs?

# Valley Wide March 2003

## # 4 “At Risk” Behaviour: Personal Protective Devices

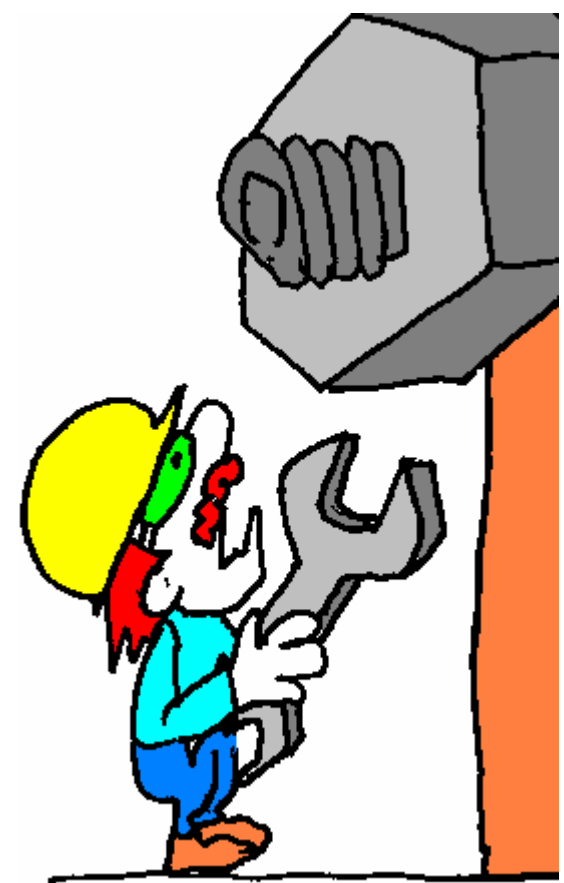
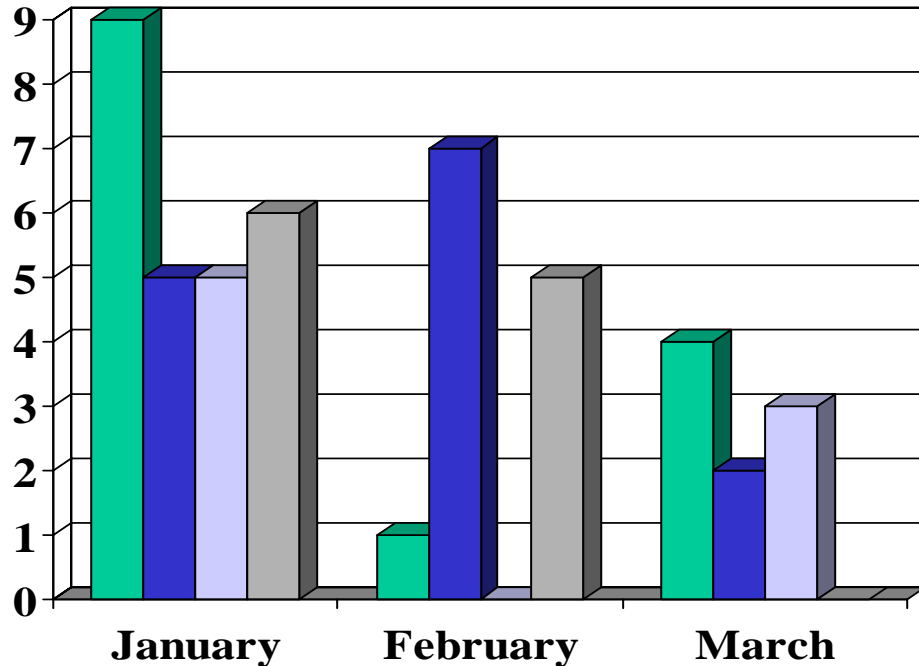


**Tape and Rope were an “at risk” in March!**

# Valley Wide March 2003

## #5 At Risk Behaviour

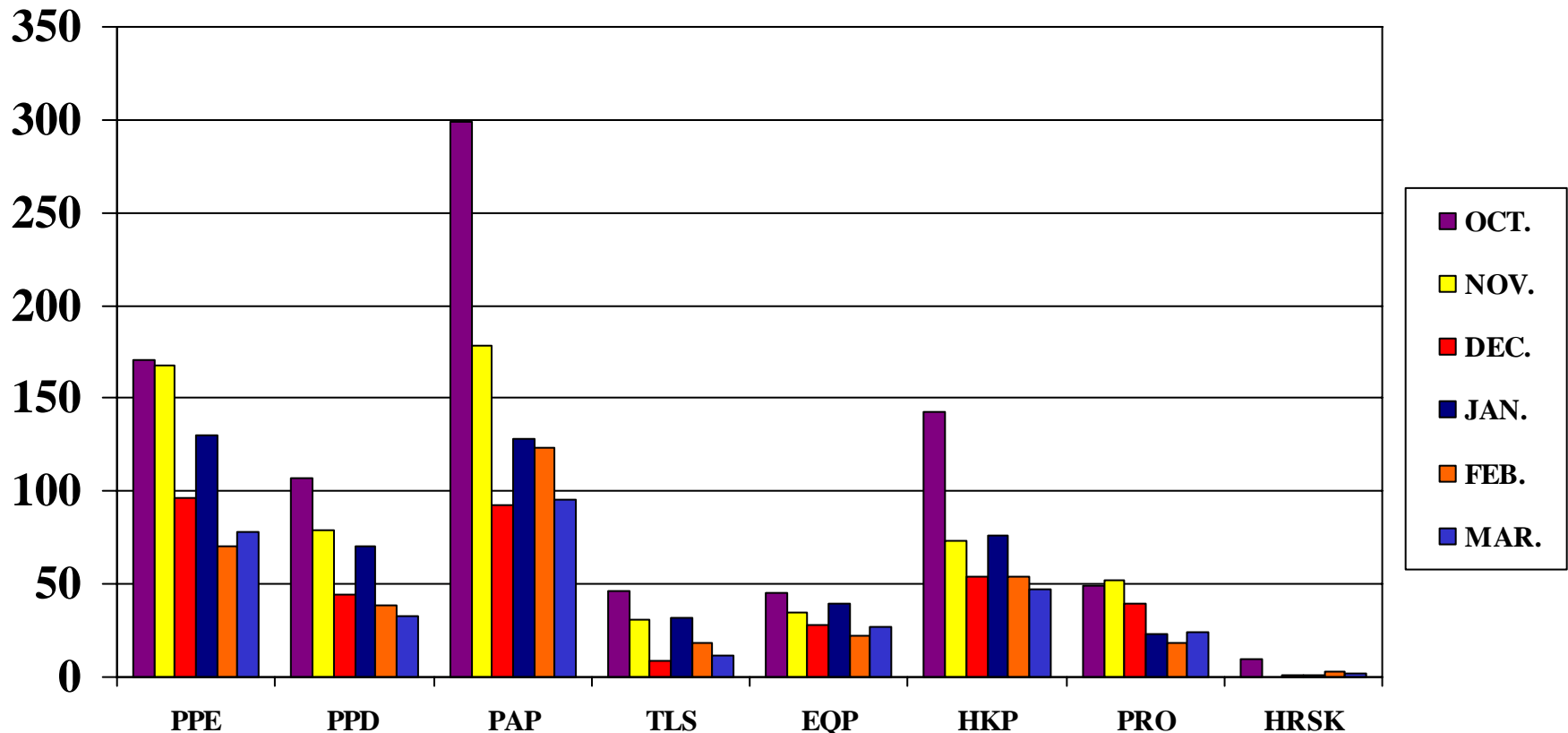
### Equipment



- INADEQUATE
- UNSAFE HANDLING
- NOT AVAILABLE
- FAULTY

**"Inadequate equipment" was an at risk this month!**

# 6 Month Observation Breakdown Contractor Submitted Data



**Observations this month were 1217 by 118 Observers!  
Don't forget to do your "TASC"**