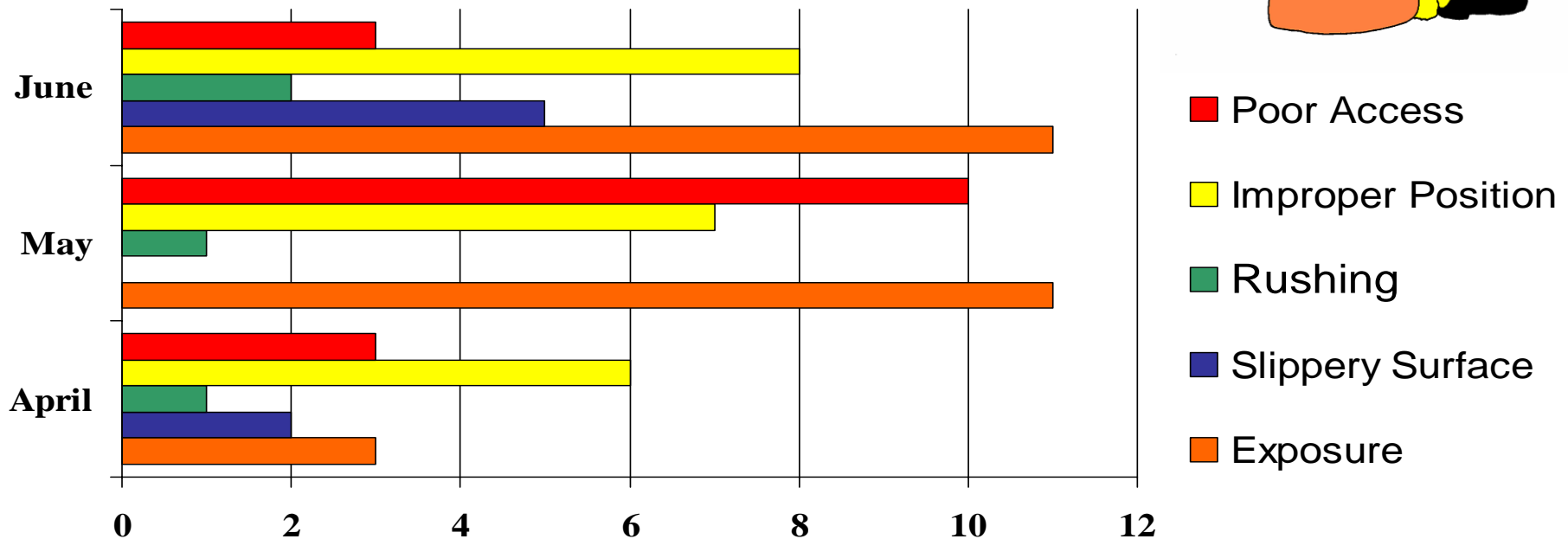


1 “At Risk” Behaviour

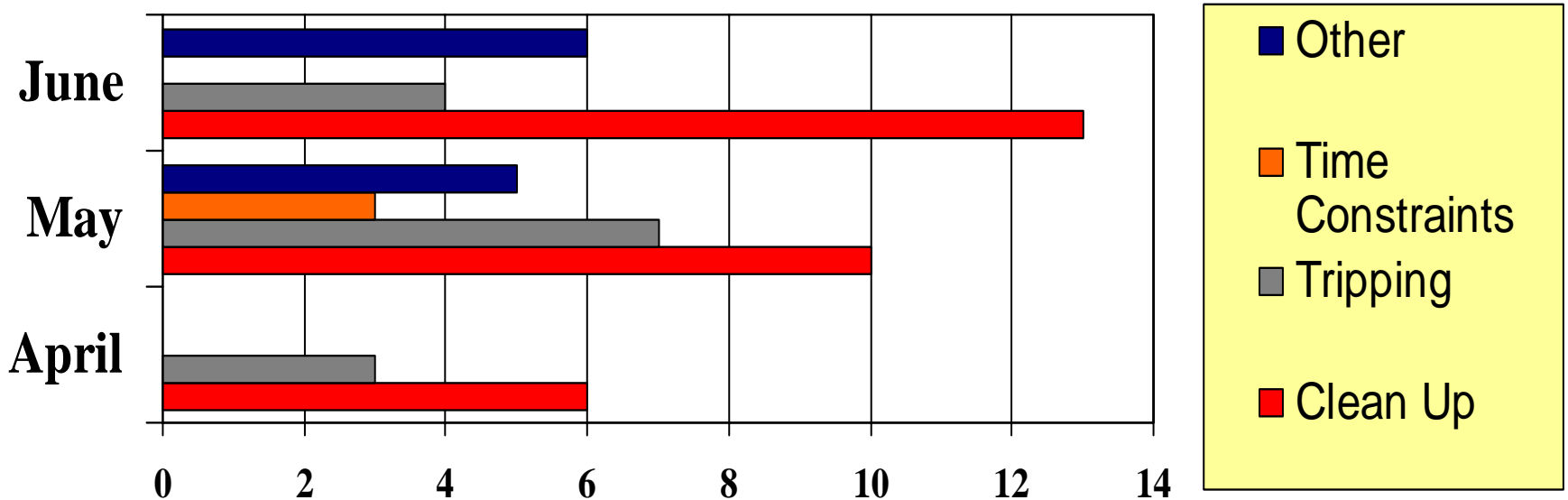
Top 4 of 9

Position and Action



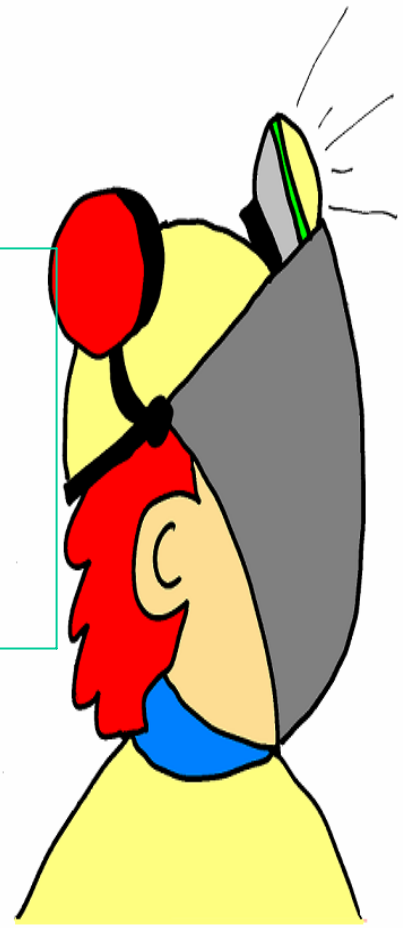
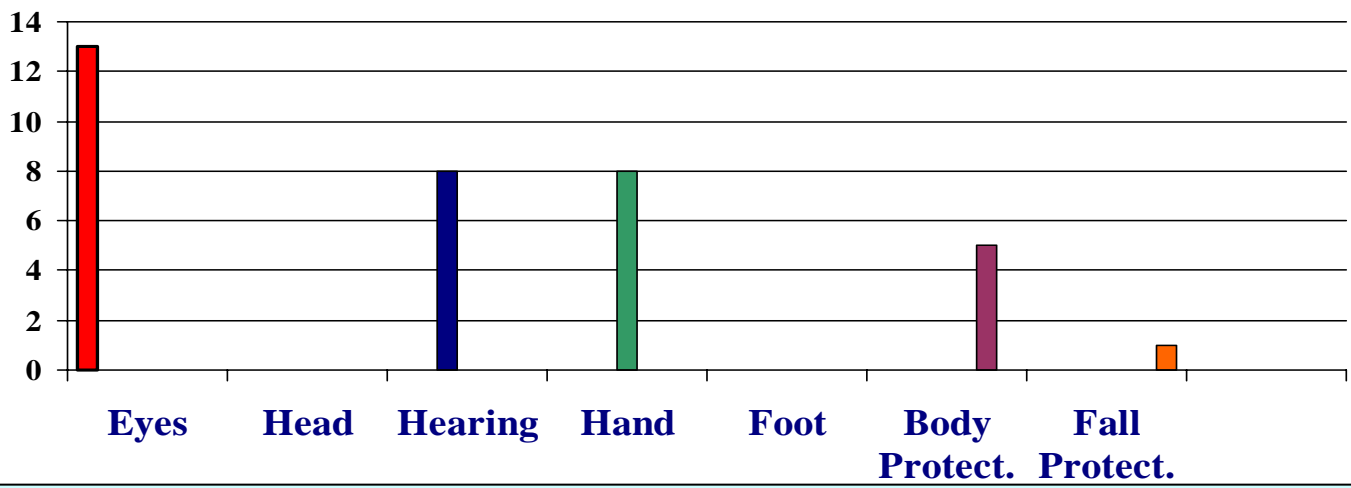
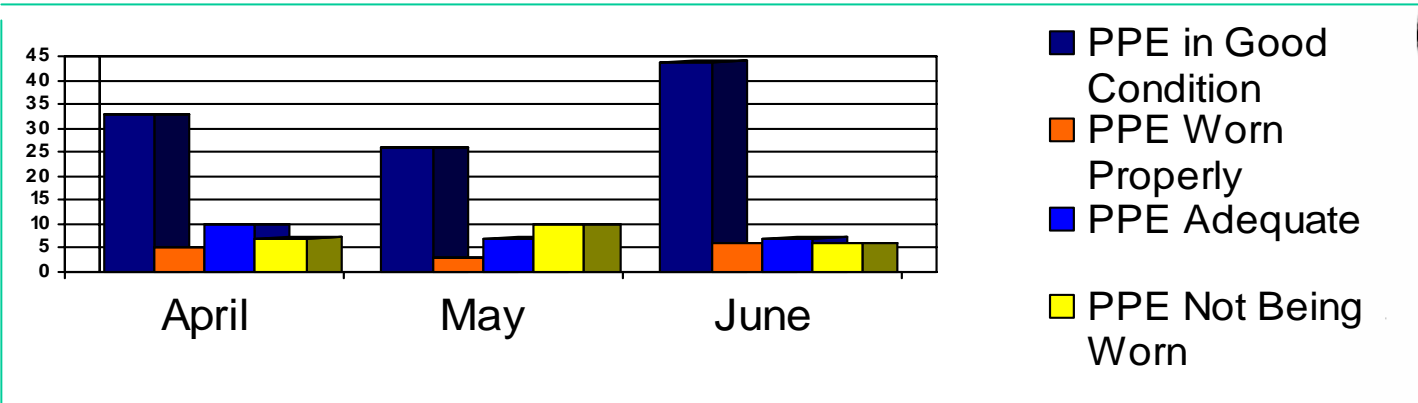
Exposure was the highest
“AT RISK” in June!

#2 “At Risk” Behaviour Housekeeping



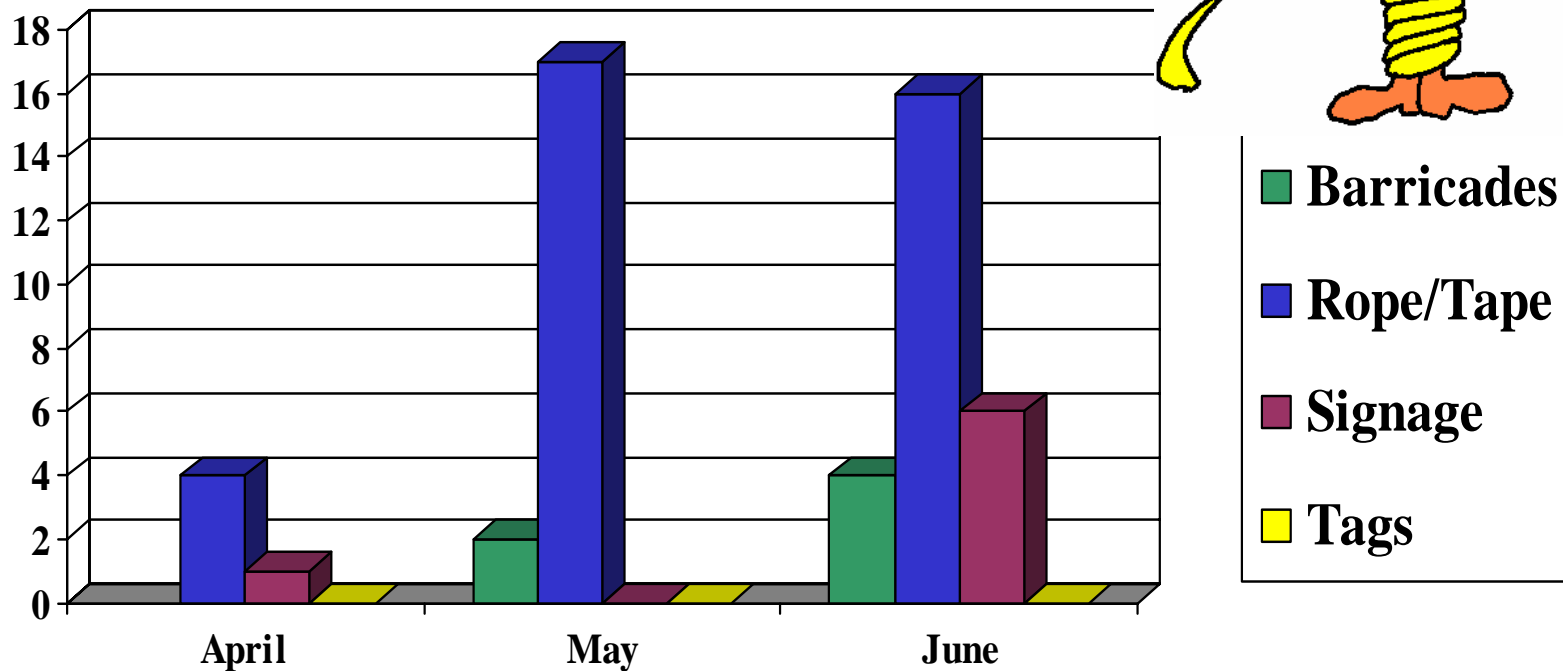
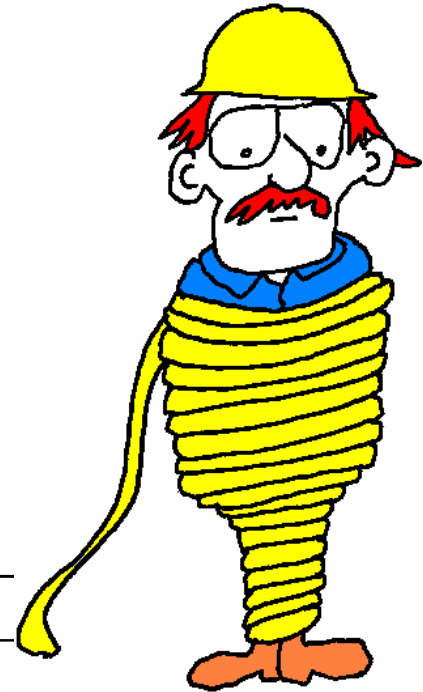
**MAKING TIME FOR CLEAN UP WILL
HELP STOP TRIPPING!**

#3 *At Risk Behaviour* Personal Protective Equipment



PPE is NOT ADEQUATE

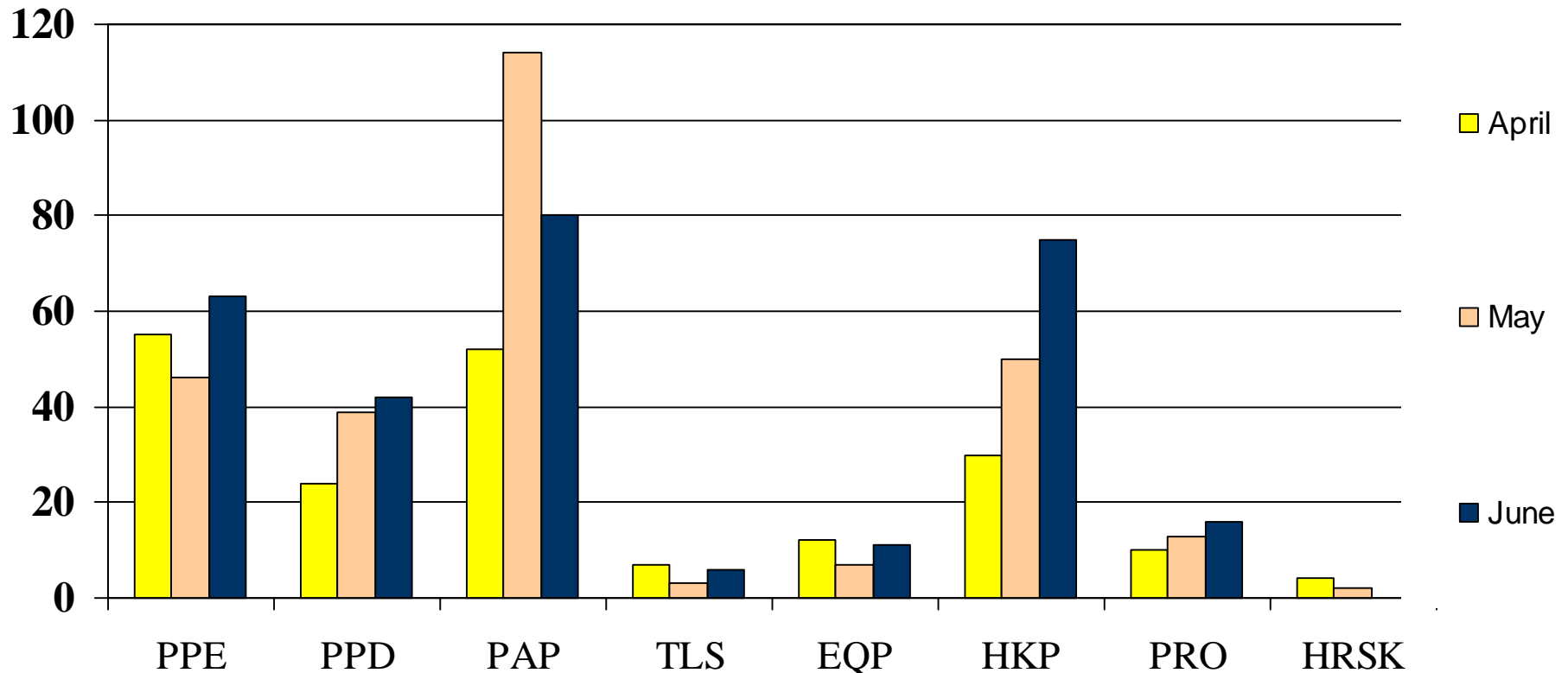
#4 “At Risk” Personal Protective Devices



**ROPE & TAPE were an “AT RISK”
for February through June!**

3 Month Observation Breakdown

2nd Quarter 2005 Contractor Submitted Data



1398 Observations last year by 375 Observers!
Don't forget to do your "TASC"