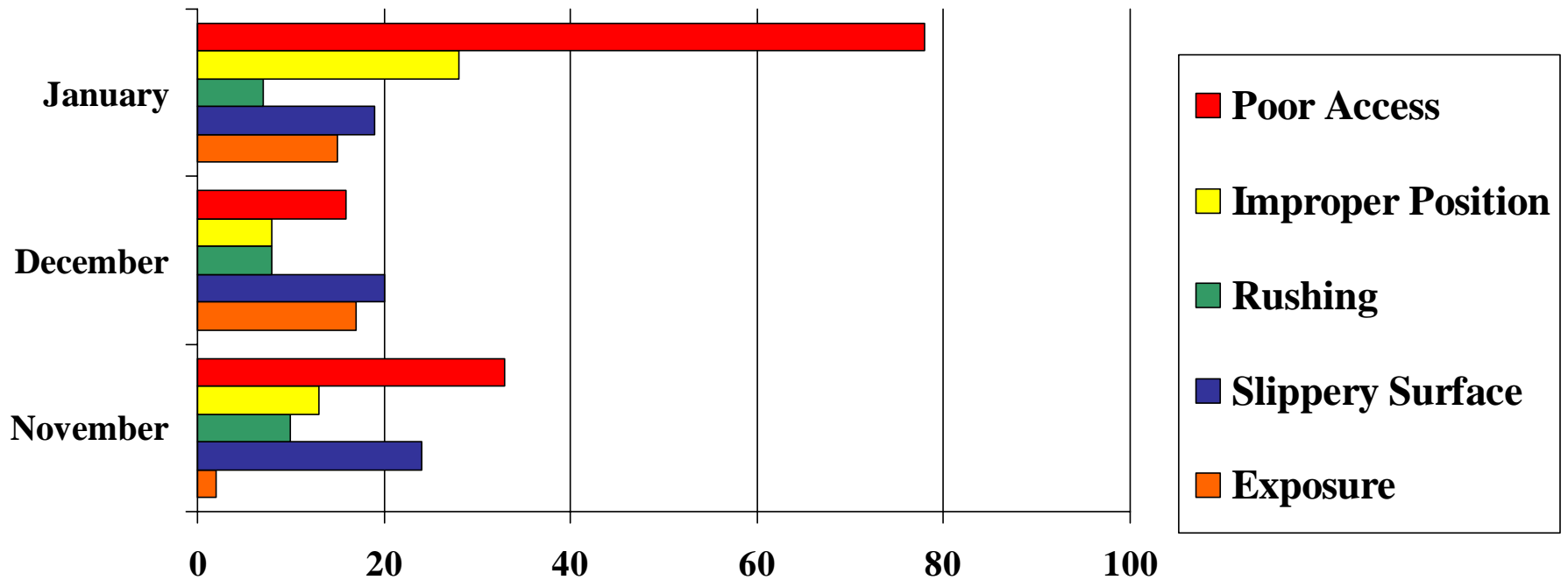


1 “At Risk” Behaviour

Top 4 of 9

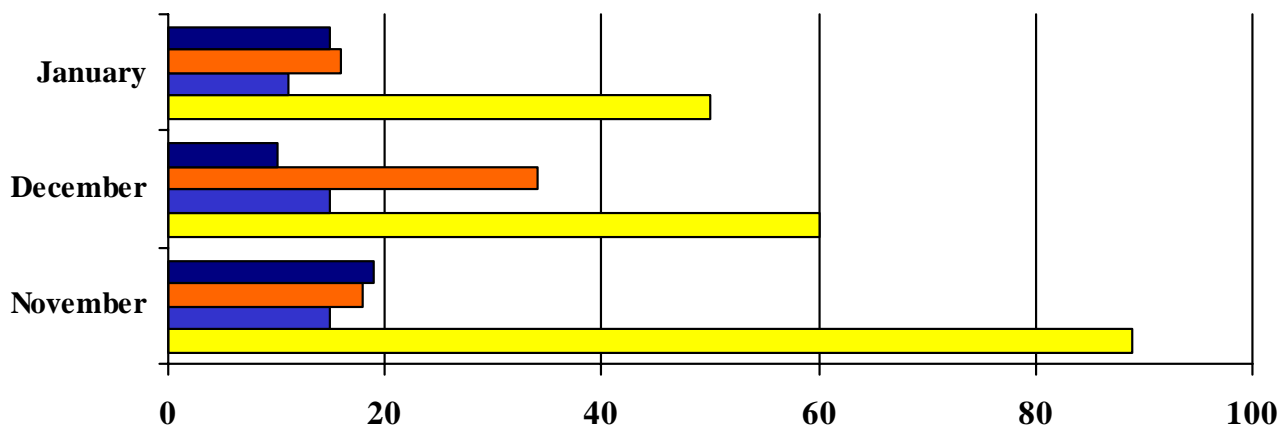
January PAP



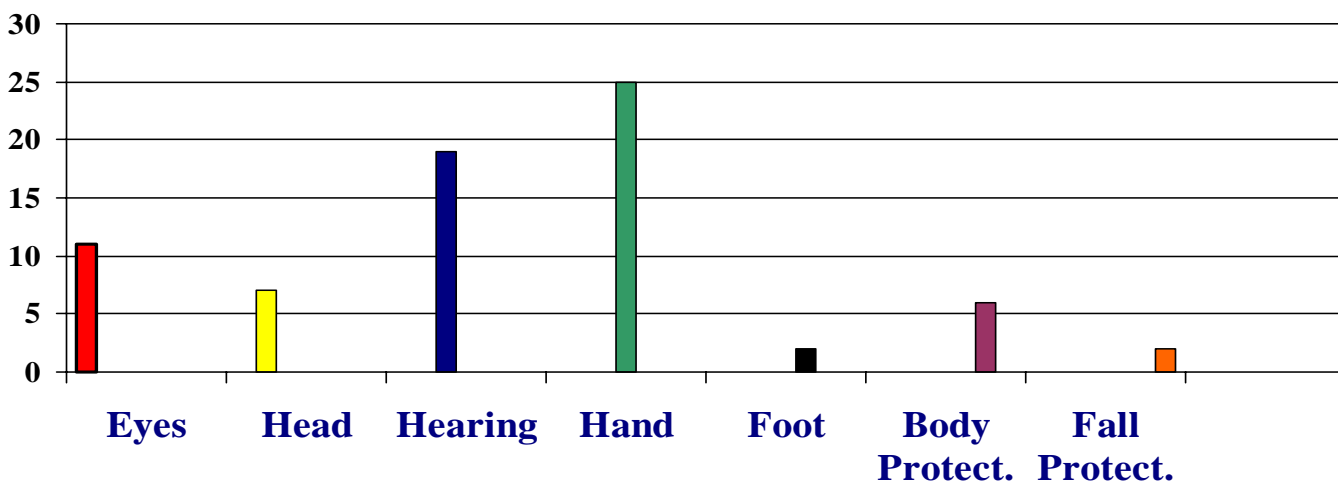
**POOR ACCESS WAS A VERY HIGH
“AT RISK” IN JANUARY!**

#2 *At Risk Behaviour*

January 2005 - PPE



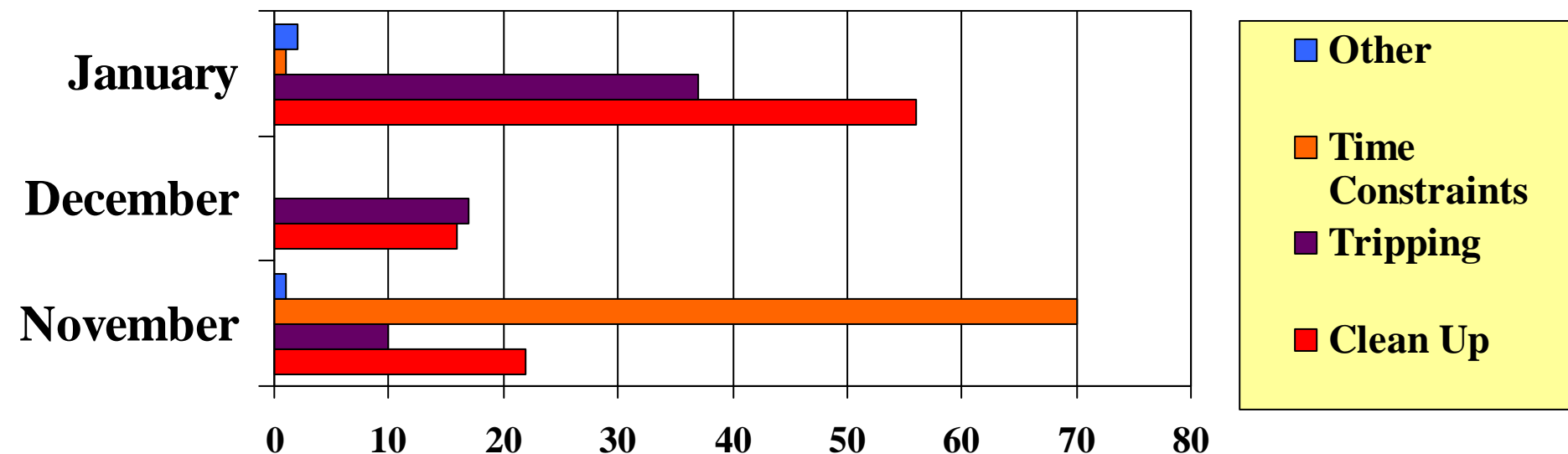
- Is PPE in good condition
- Is PPE worn properly
- Is PPE adequate
- Is PPE being worn



HAND PROTECTION NOT BEING WORN!

#3 “At Risk” Behaviour

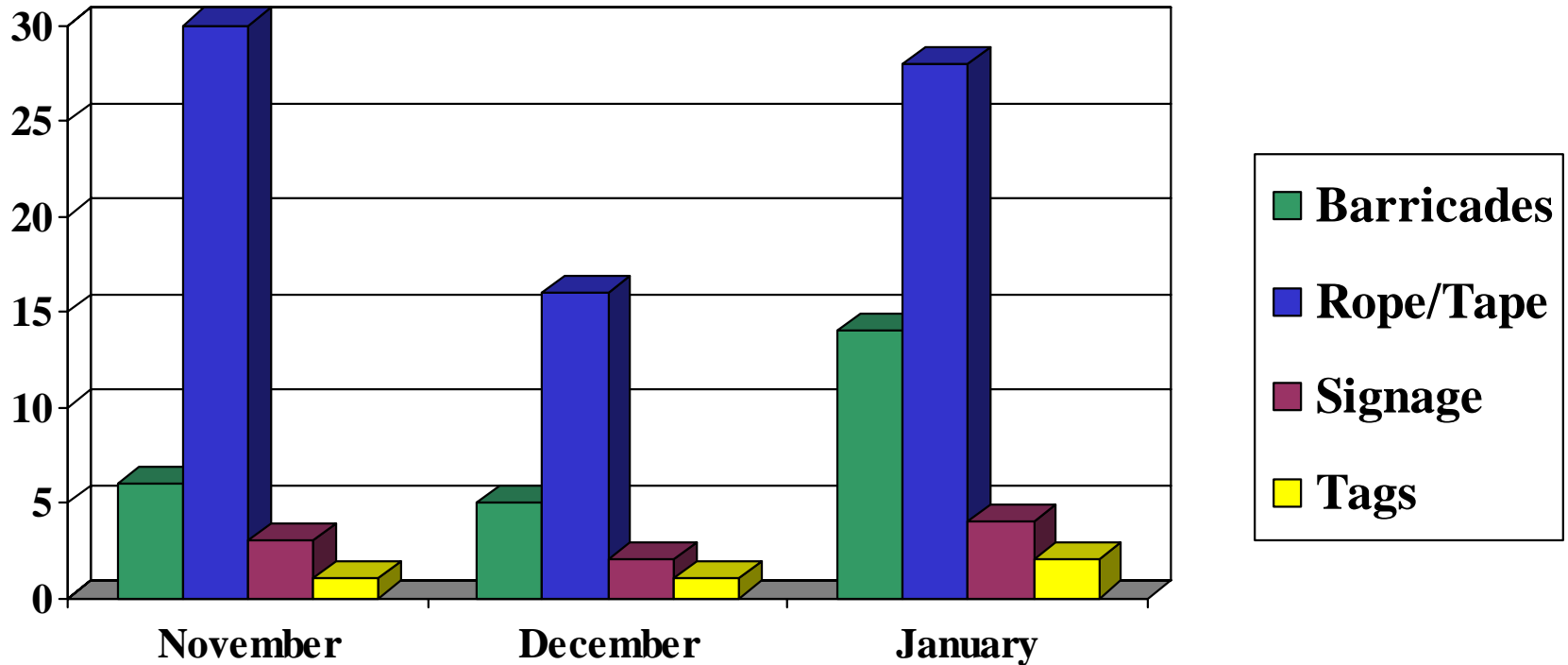
January 2005 - HSK



**MAKING TIME FOR CLEAN UP WILL
HELP STOP TRIPPING!**

#4 “At Risk”

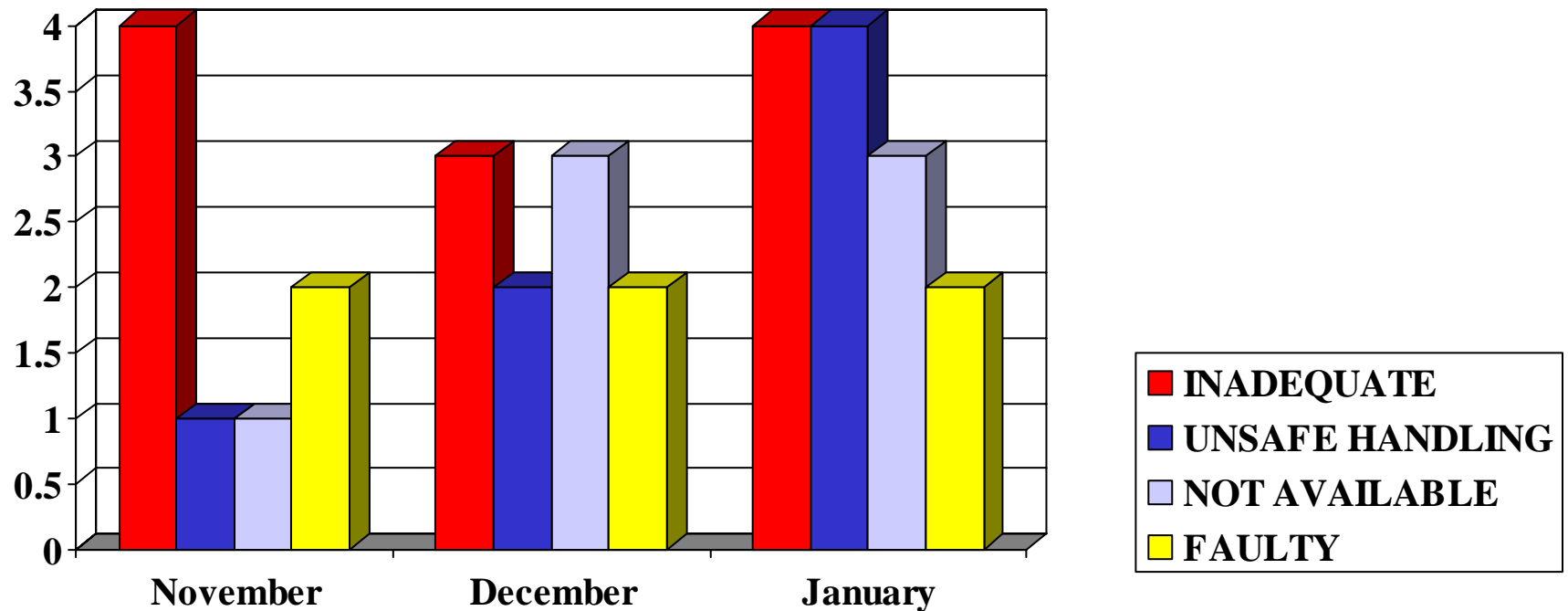
January 2005 - PPD



**ROPE & TAPE were an “AT RISK”
again in January!**

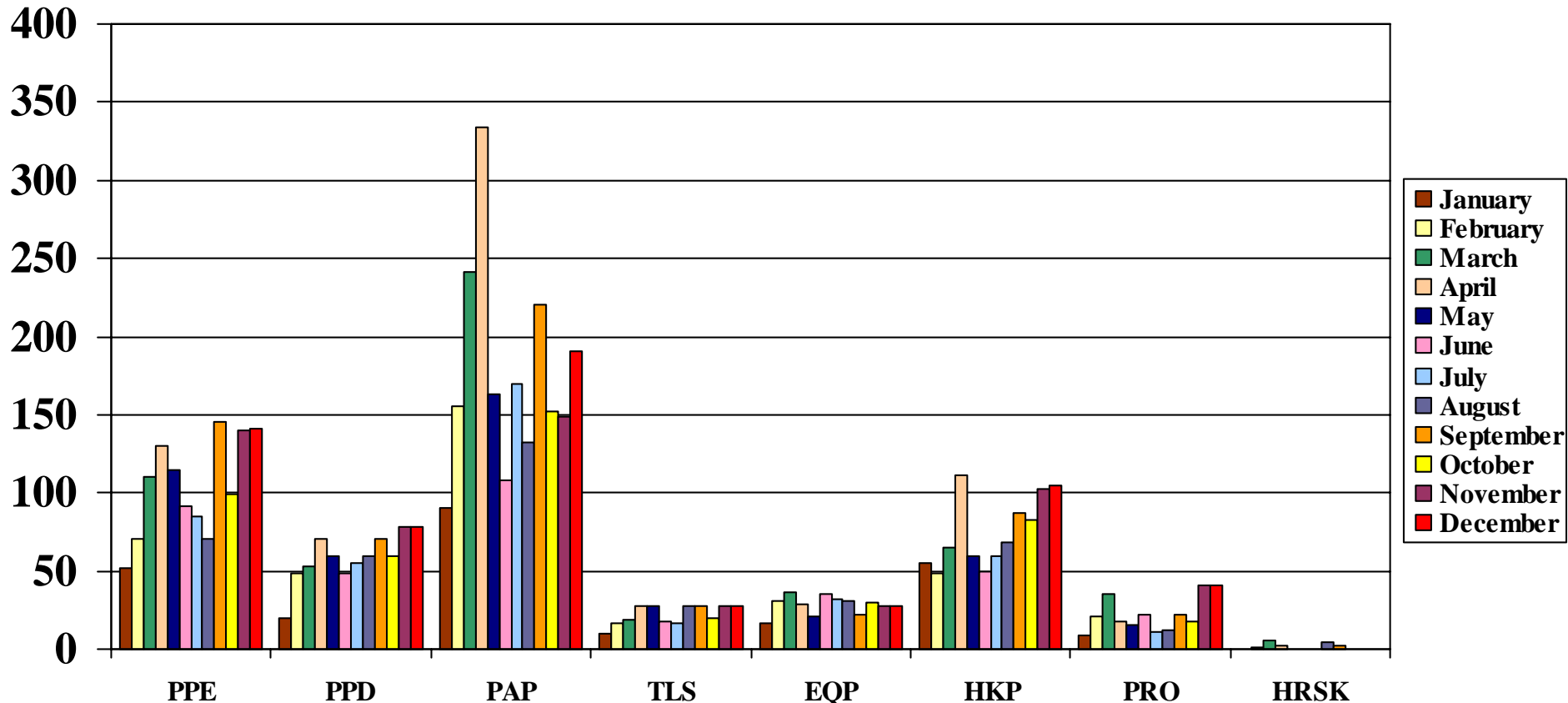
#5 At Risk Behaviour

January 2005 - EQPT.



**INADEQUATE & EQUIPMENT NOT AVAILABLE
WAS HIGH IN JANUARY!**

(2004) 12 Month Observation Breakdown Contractor Submitted Data



**23099 Observations last year by 2061 Observers!
Don't forget to do your "TASC"**