

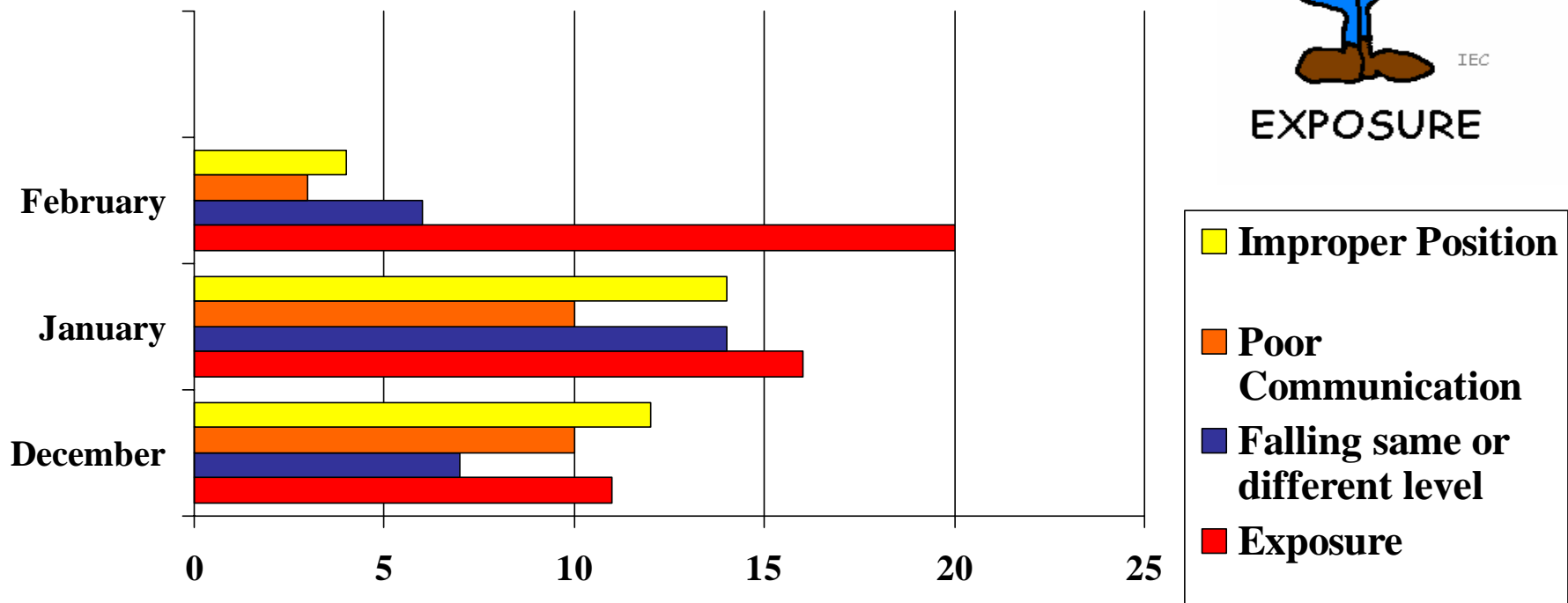
# Valley Wide February 2003

## # 1 “At Risk”

## Positions & Actions



EXPOSURE

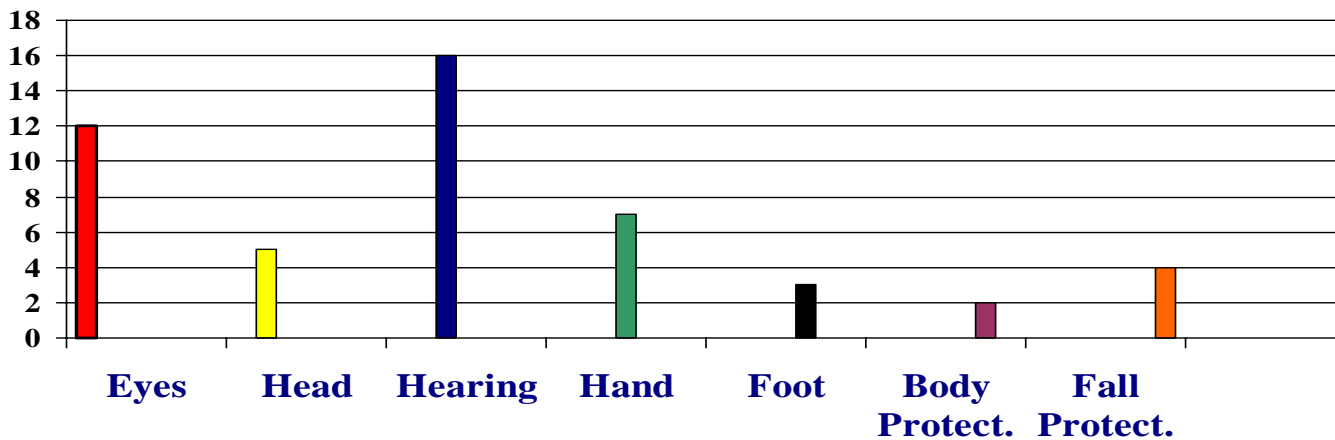
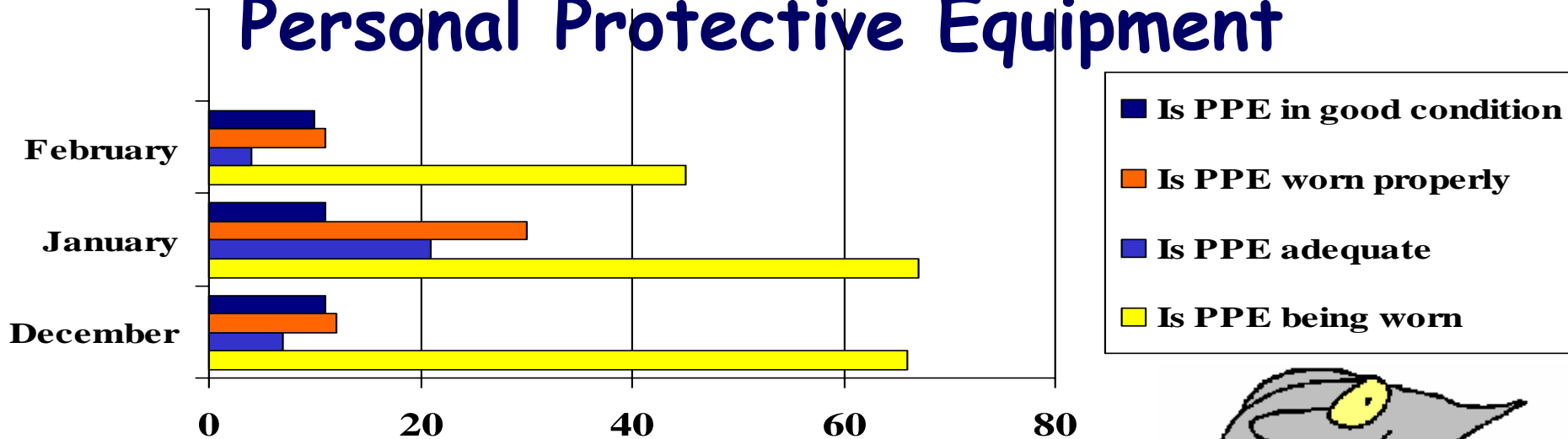


•Exposure was high this month!

# Valley Wide February 2003

## #2 \*At Risk Behaviour\*

### Personal Protective Equipment



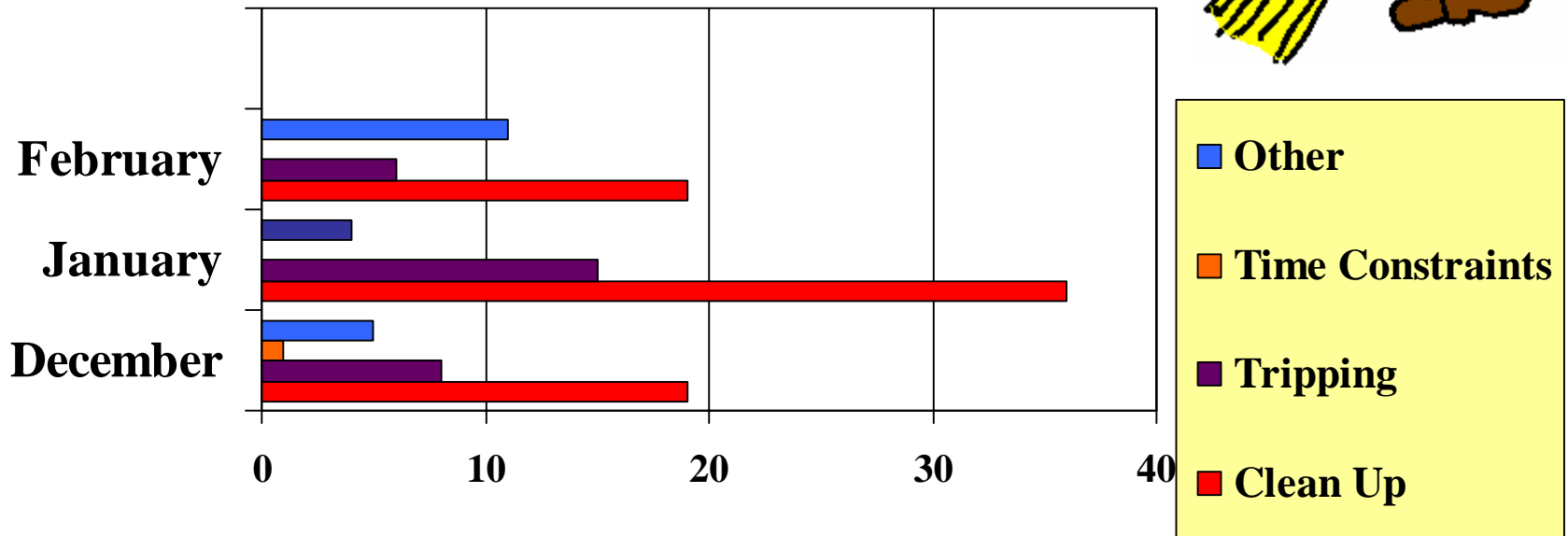
DON'T FORGET TO PICK UP YOUR HEARING PROTECTION

Don't forget to pick up your hearing protection!

# Valley Wide February 2003

#3 “At Risk” is

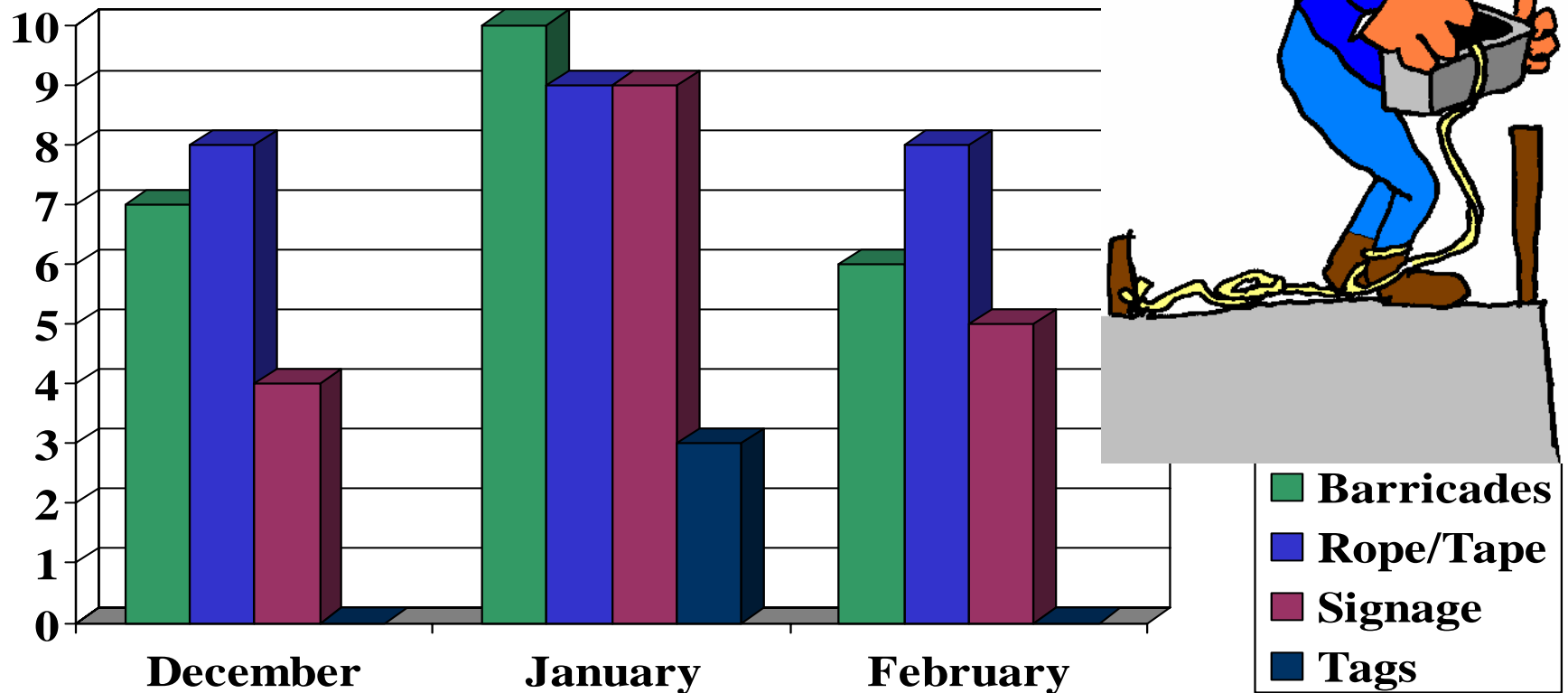
**Housekeeping**



Does this apron make me look fat?

# Valley Wide February 2003

## # 4 “At Risk” Behaviour: Personal Protective Devices

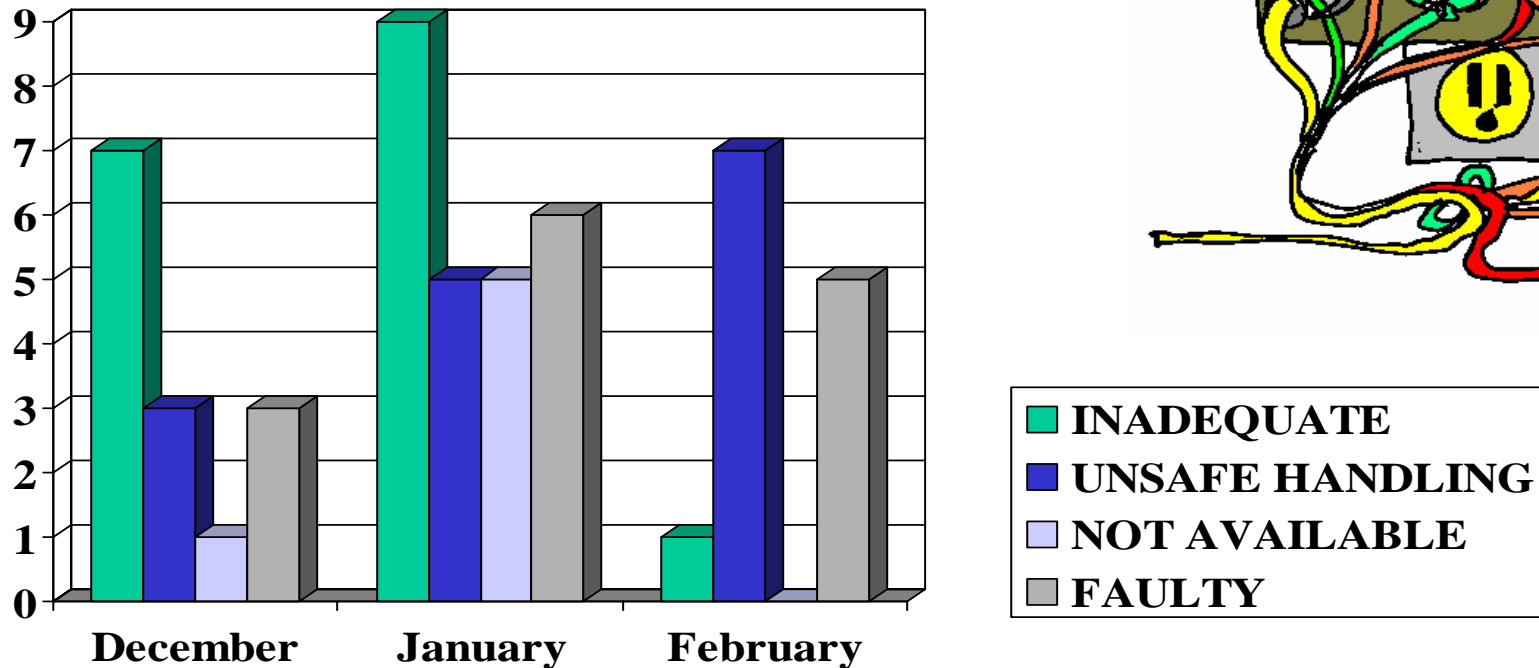
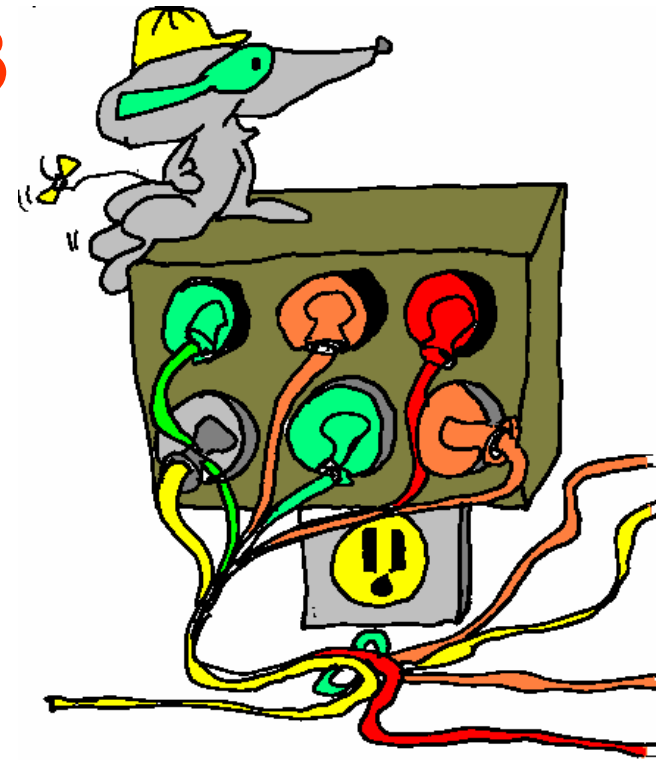


Here, I'll throw it down to you!

# Valley Wide February 2003

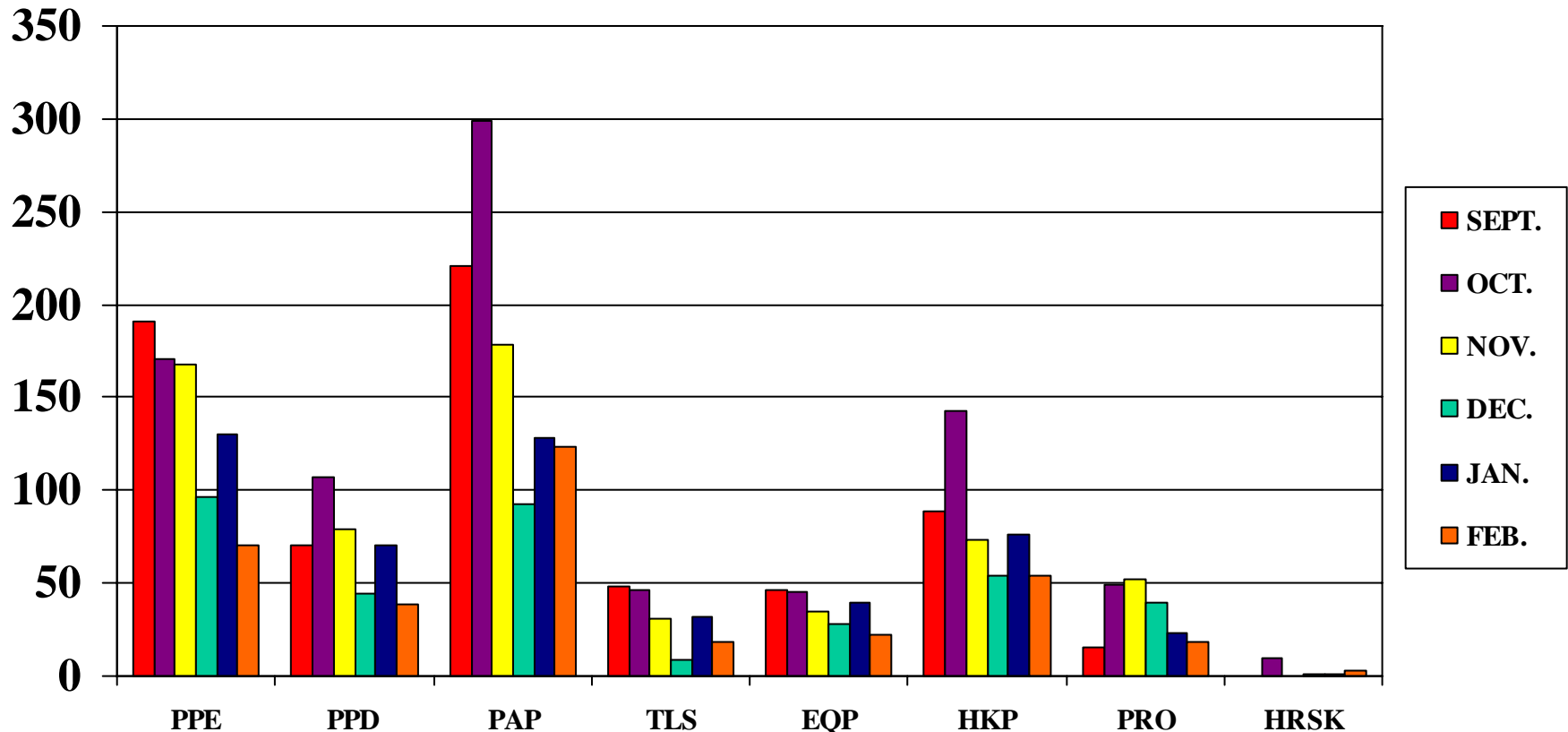
## #5 At Risk Behaviour

### Equipment



**Unsafe and faulty equipment was high for February!**

# 6 Month Observation Breakdown Contractor Submitted Data



**Observations this month were 1352 by 136 Observers!  
Don't forget to do your "TASC"**