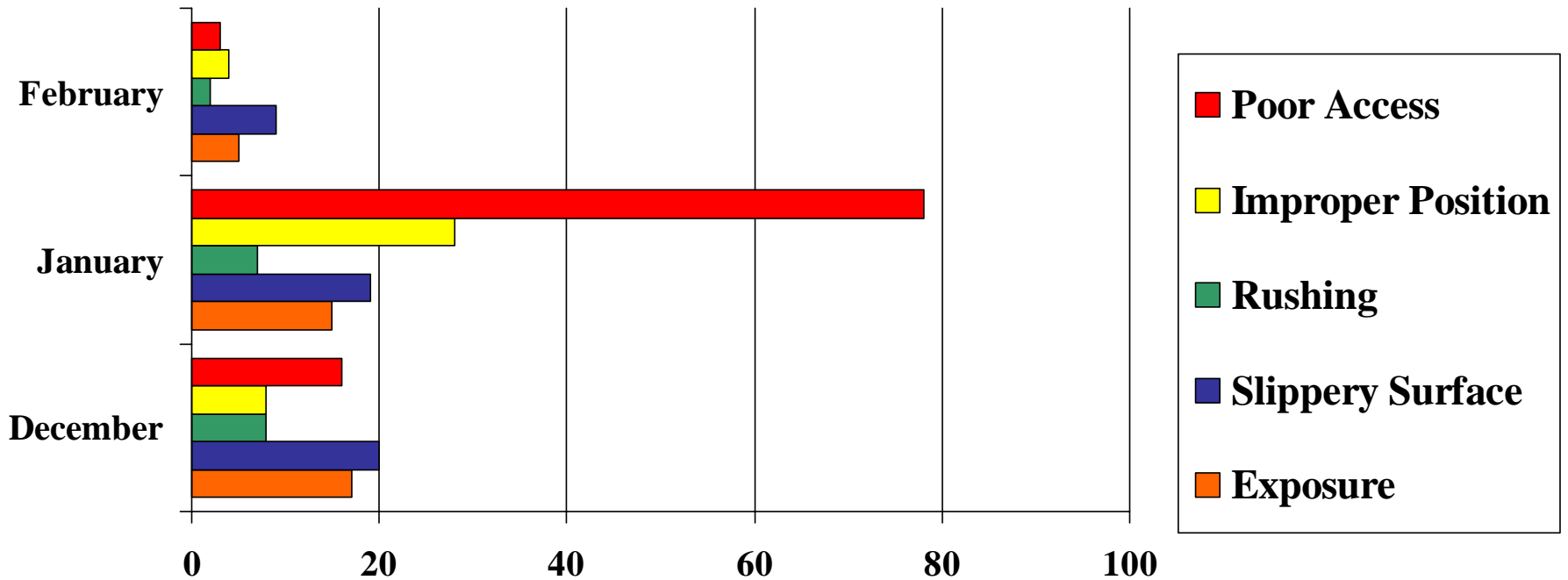


# # 1 “At Risk” Behaviour

## Top 4 of 9

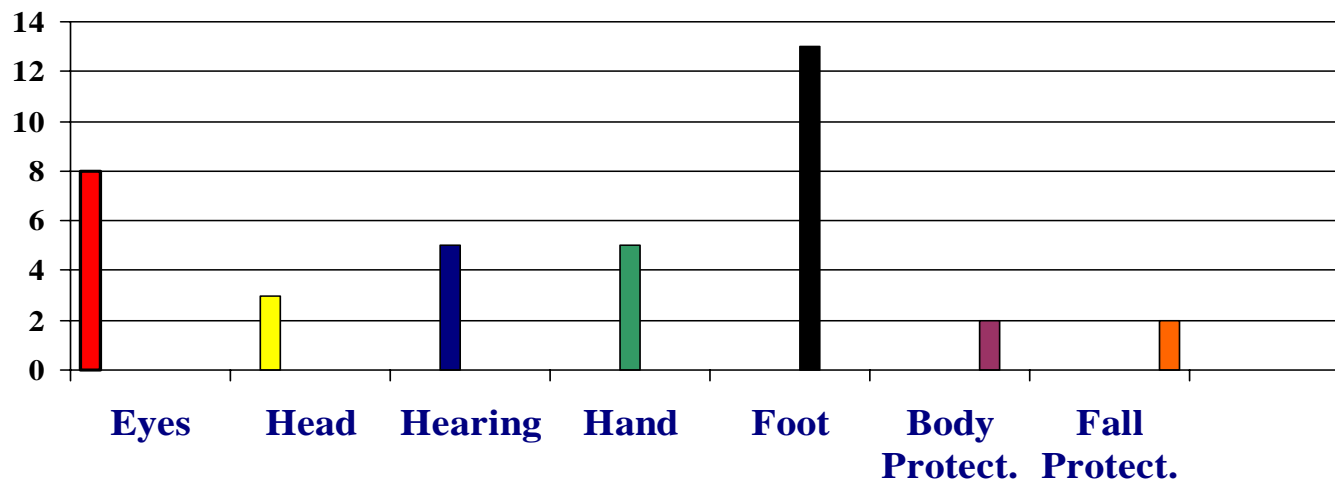
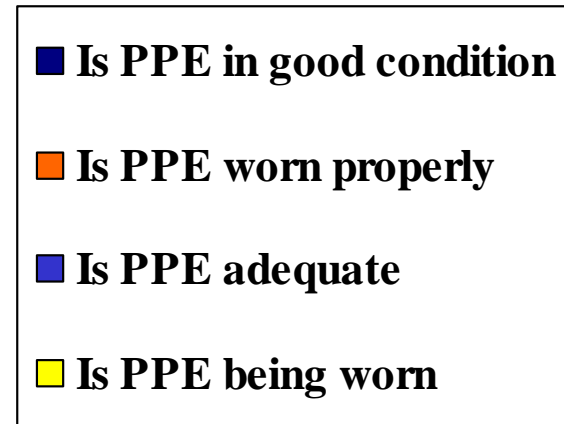
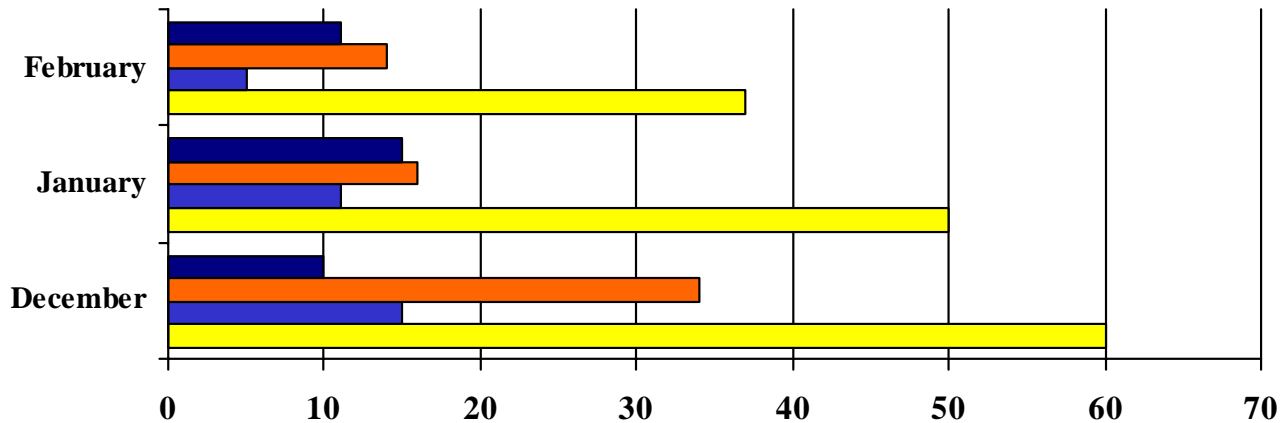
### February PAP



Slippery Surfaces were the  
“AT RISK” in February!

# #2 \*At Risk Behaviour\*

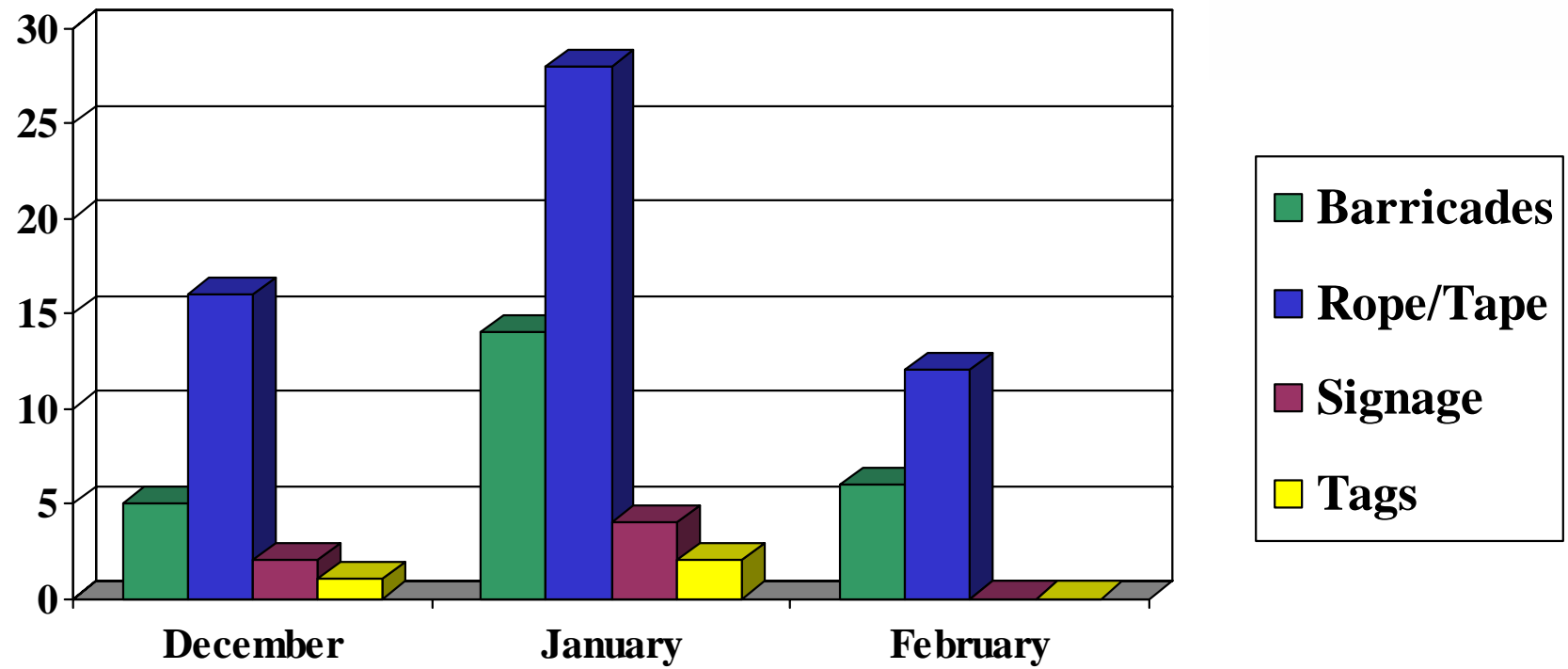
## February 2005 - PPE



**FOOT PROTECTION NEEDS TO BE WORN!**

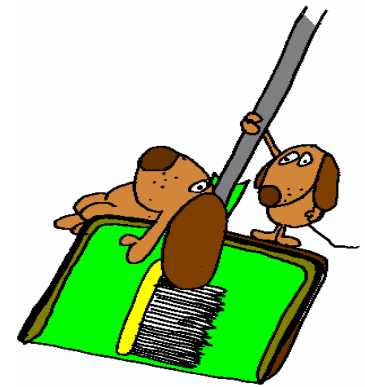
# #3 “At Risk”

## February 2005 - PPD

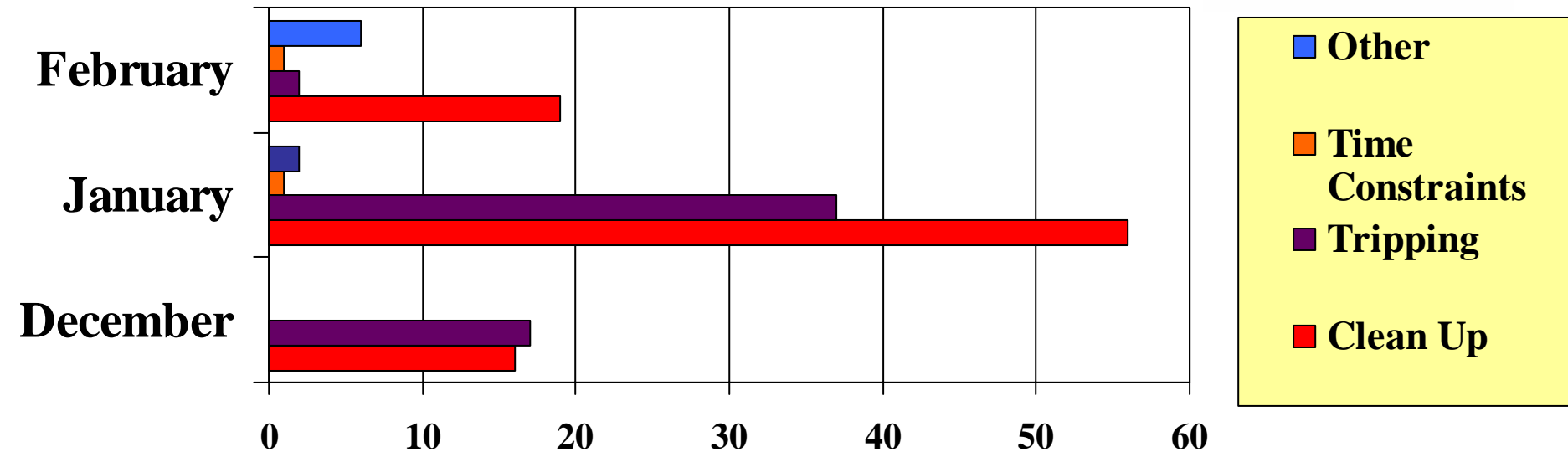


**ROPE & TAPE were an “AT RISK” again in February!**

# #4 “At Risk” Behaviour February 2005 - HSK



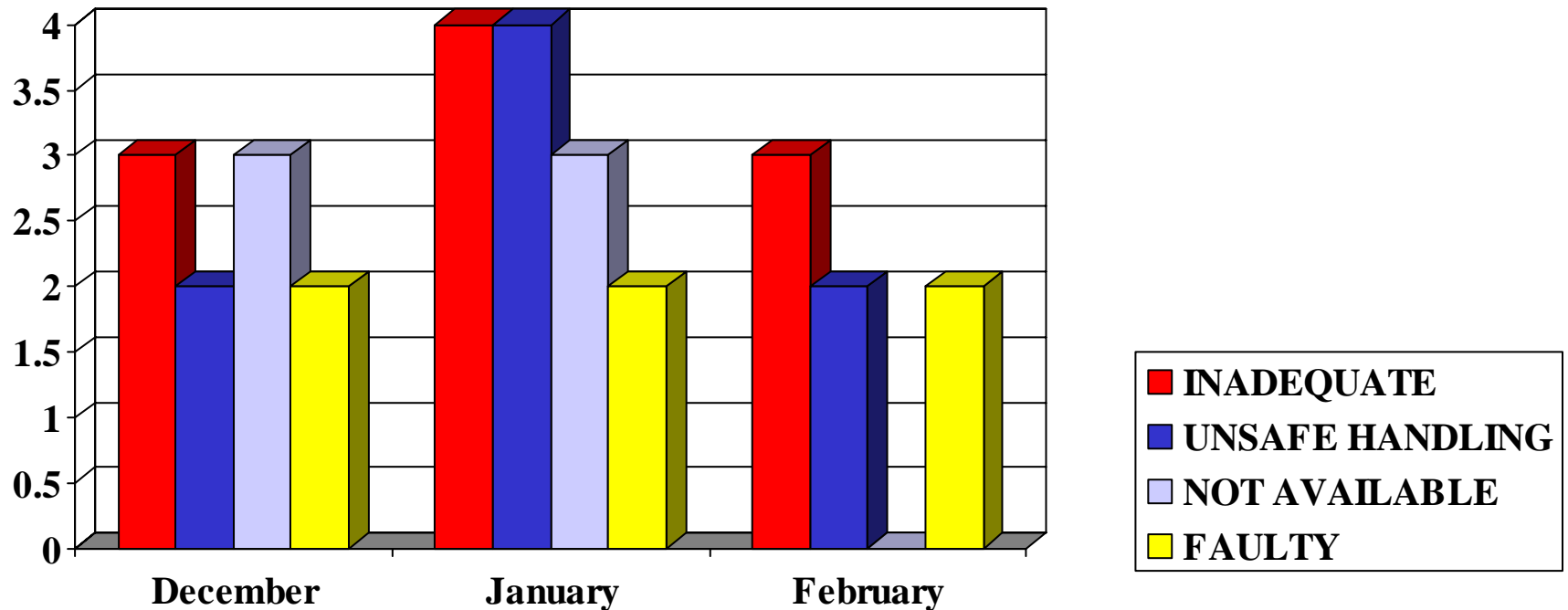
Housekeeping has gone to the dogs!



**MAKING TIME FOR CLEAN UP WILL  
HELP STOP TRIPPING!**

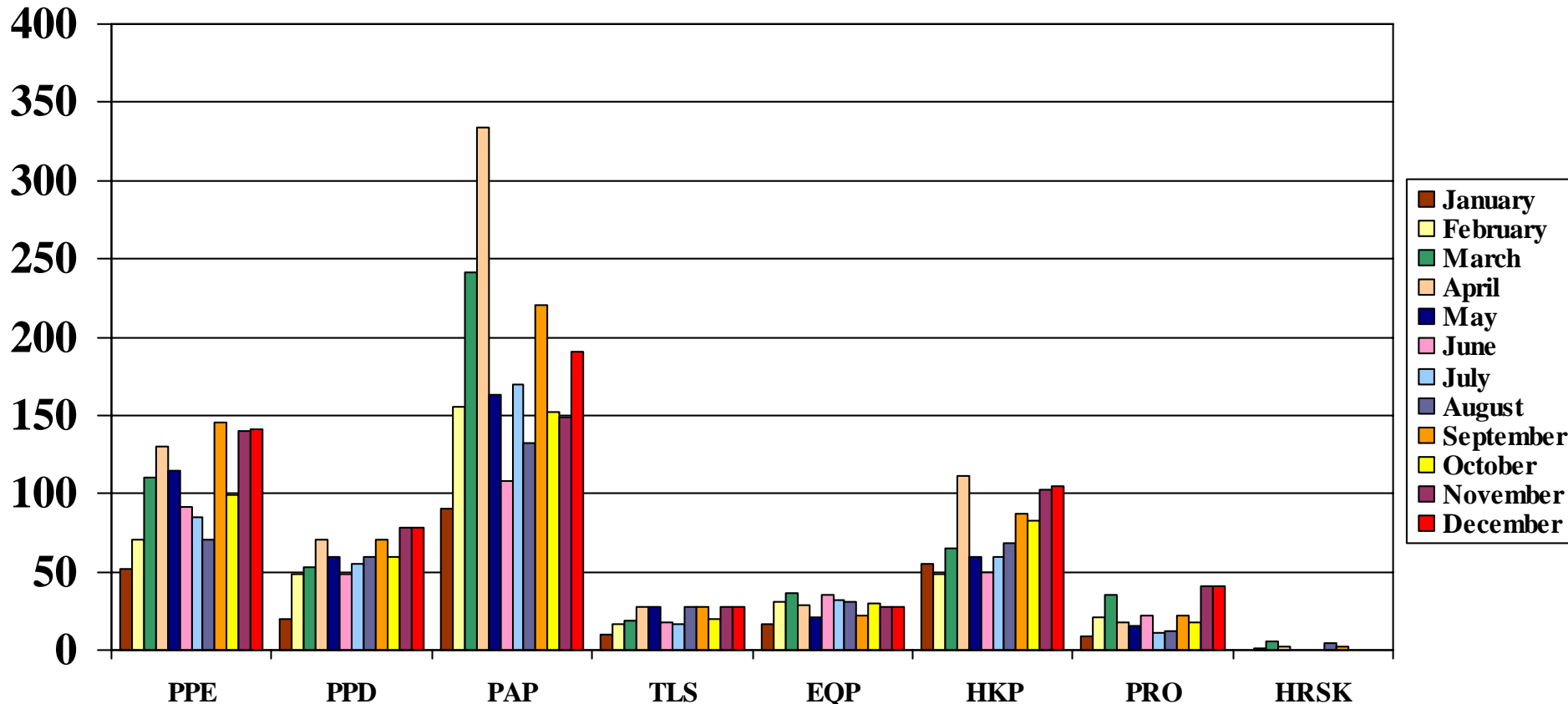
# #5 At Risk Behaviour

## February 2005 - EQPT.



**INADEQUATE EQUIPMENT WAS HIGH IN JANUARY!**

# (2004) 12 Month Observation Breakdown Contractor Submitted Data



**23099 Observations last year by 2061 Observers!  
Don't forget to do your "TASC"**