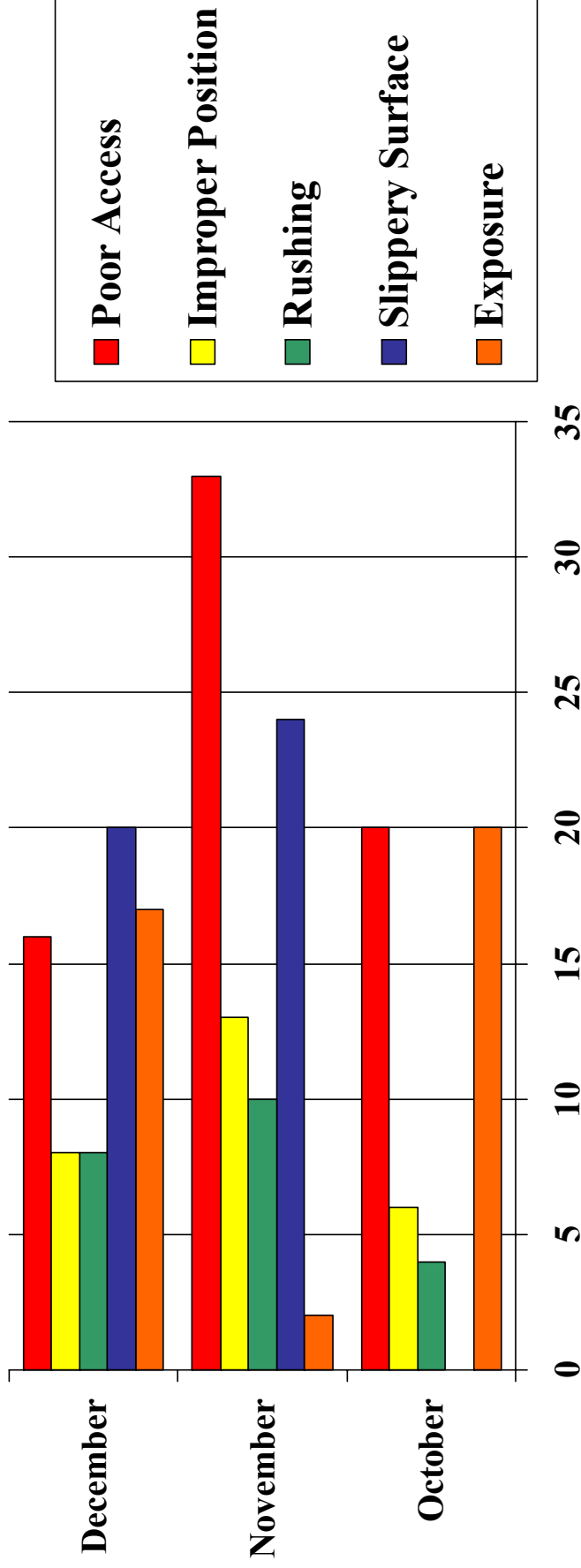


# Valley Wide December # 1 “At Risk” Behaviour

## Top 4 of 9

### Positions & Actions

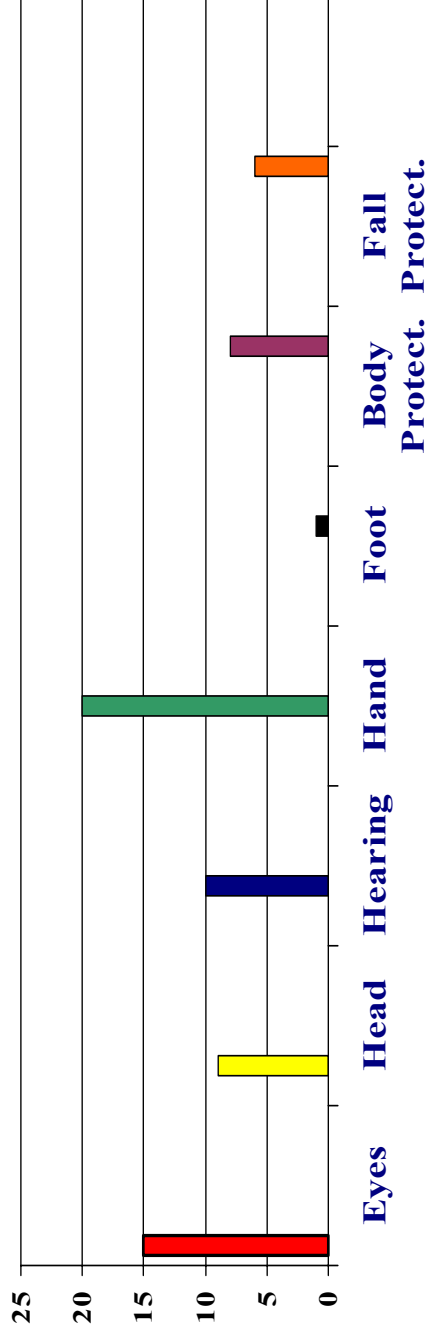
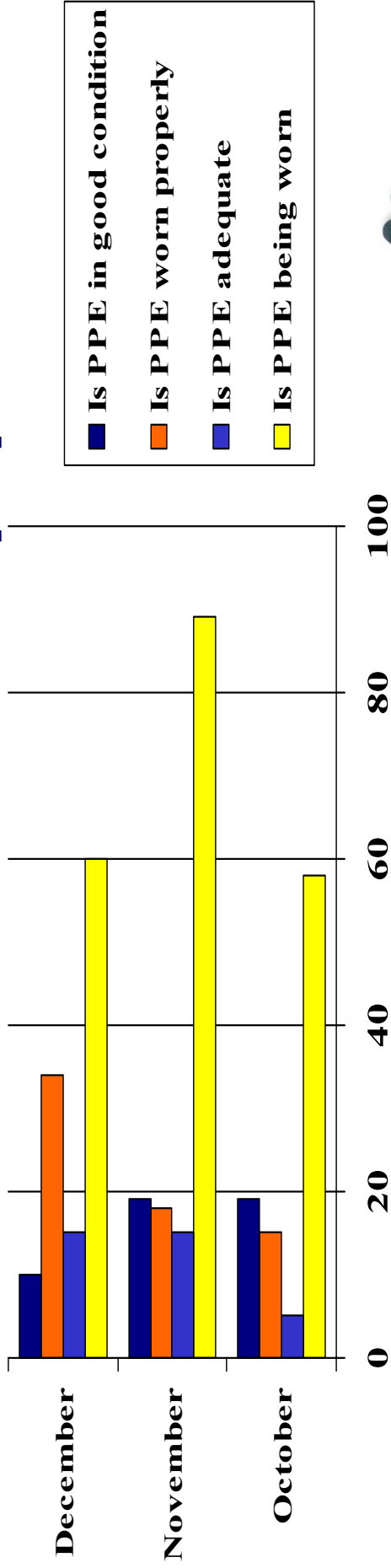


**SLIPPERY SURFACES WAS A VERY HIGH  
“AT RISK” IN DECEMBER!**

# Valley Wide December 2004

## #2 \*At Risk Behaviour\*

### Personal Protective Equipment

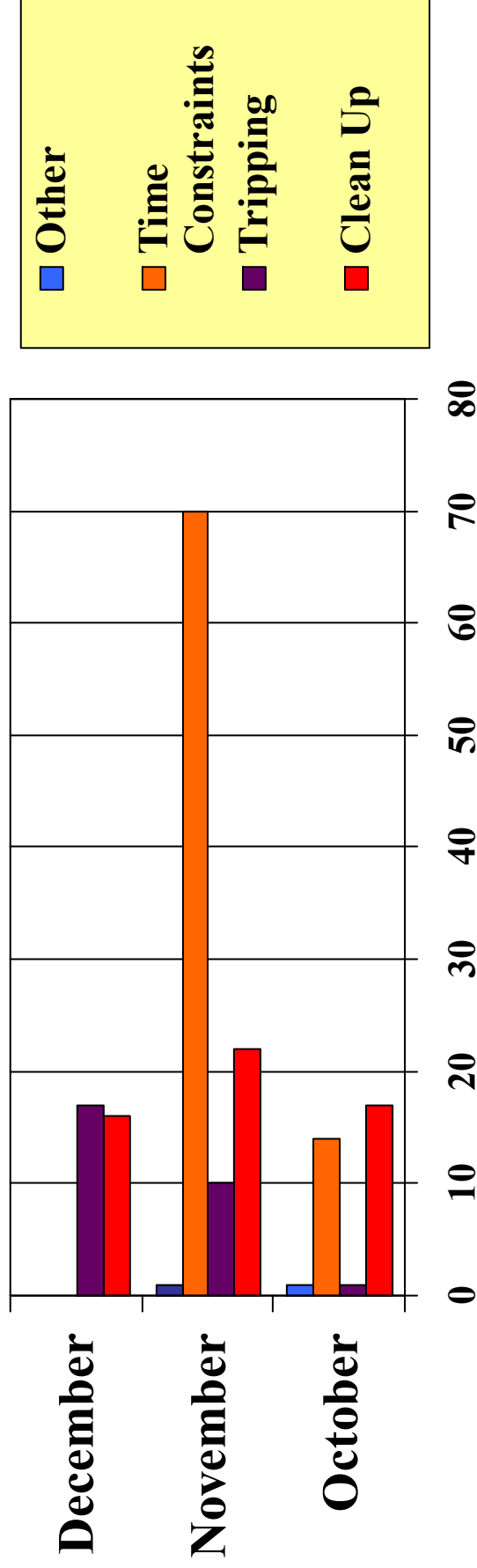


**HAND PROTECTION NOT BEING WORN!**

# Valley Wide December 2004

## #3 “At Risk” Behaviour

### Housekeeping

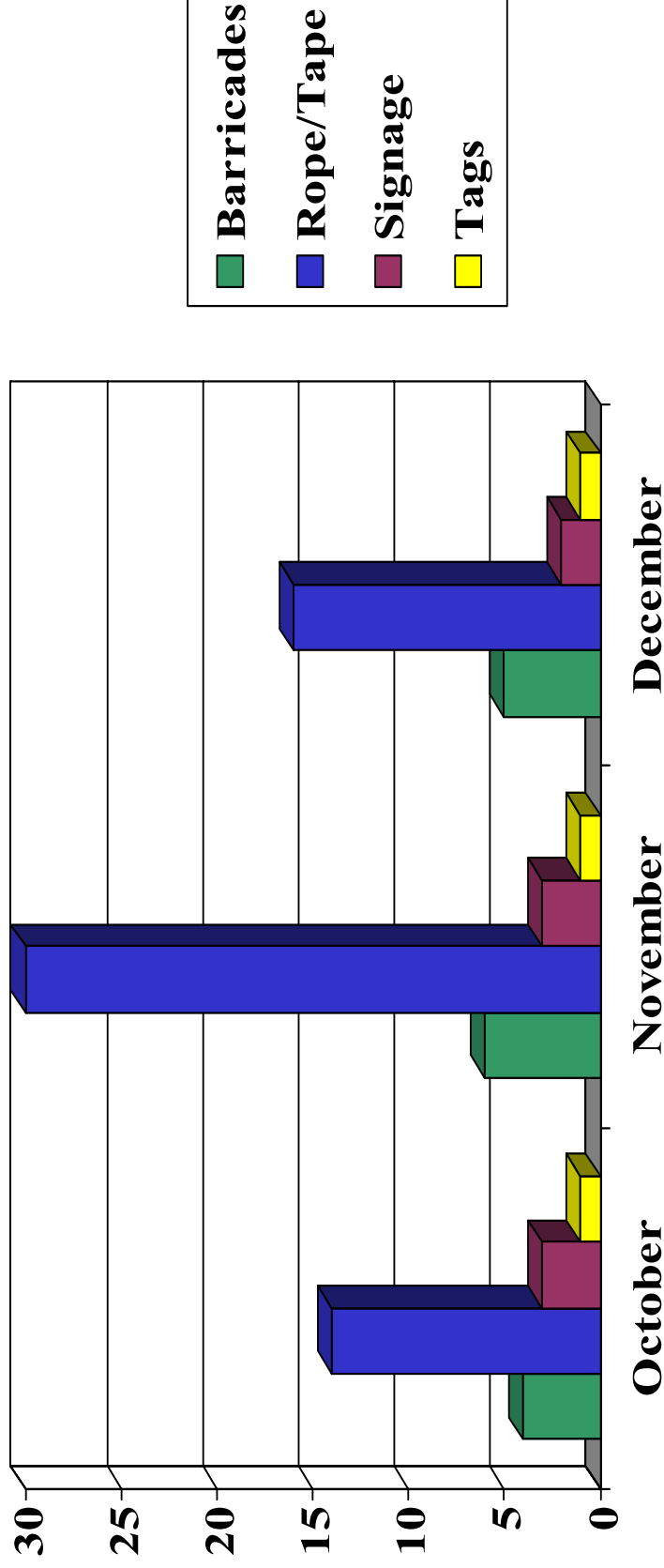


**MAKING TIME FOR CLEAN UP WILL  
HELP STOP TRIPPING!**

# December 2004

## #4 “At Risk”

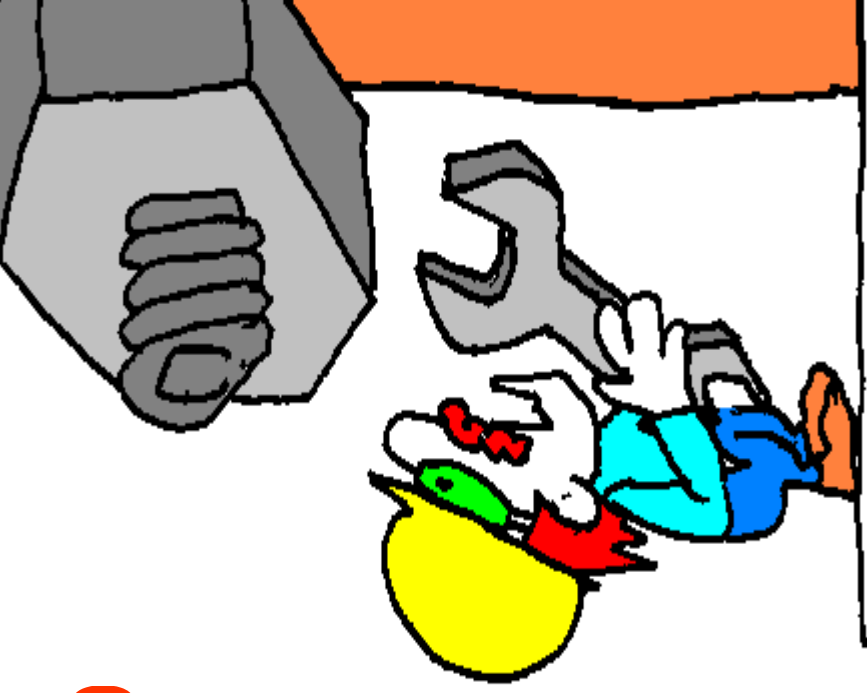
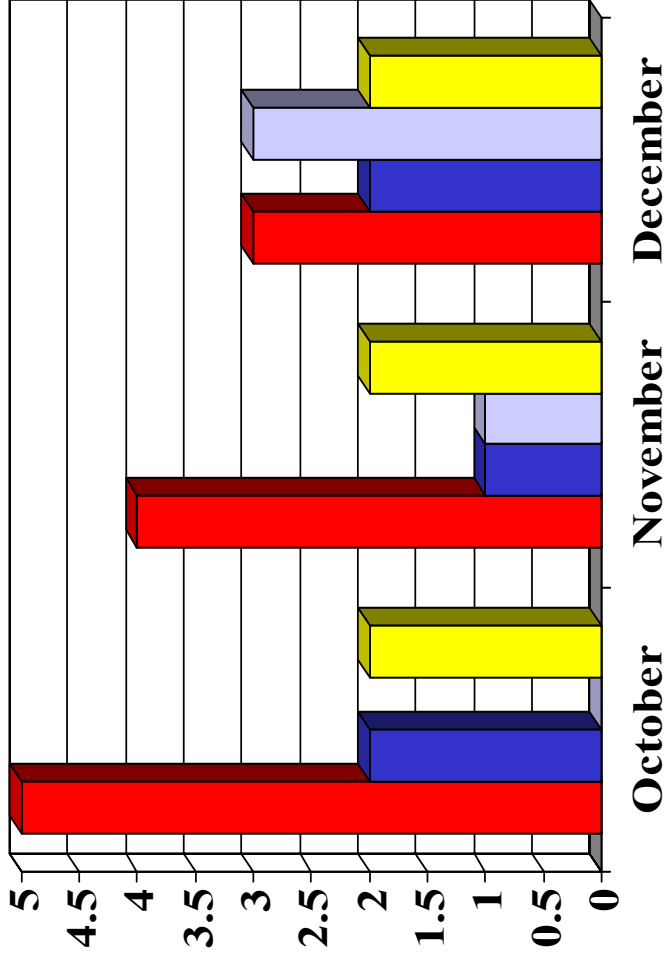
### Personal Protective Devices



**ROPE & TAPE were an “AT RISK”  
again in DECEMBER!**

# Valley Wide December 200

## #5 At Risk Behaviour Equipment

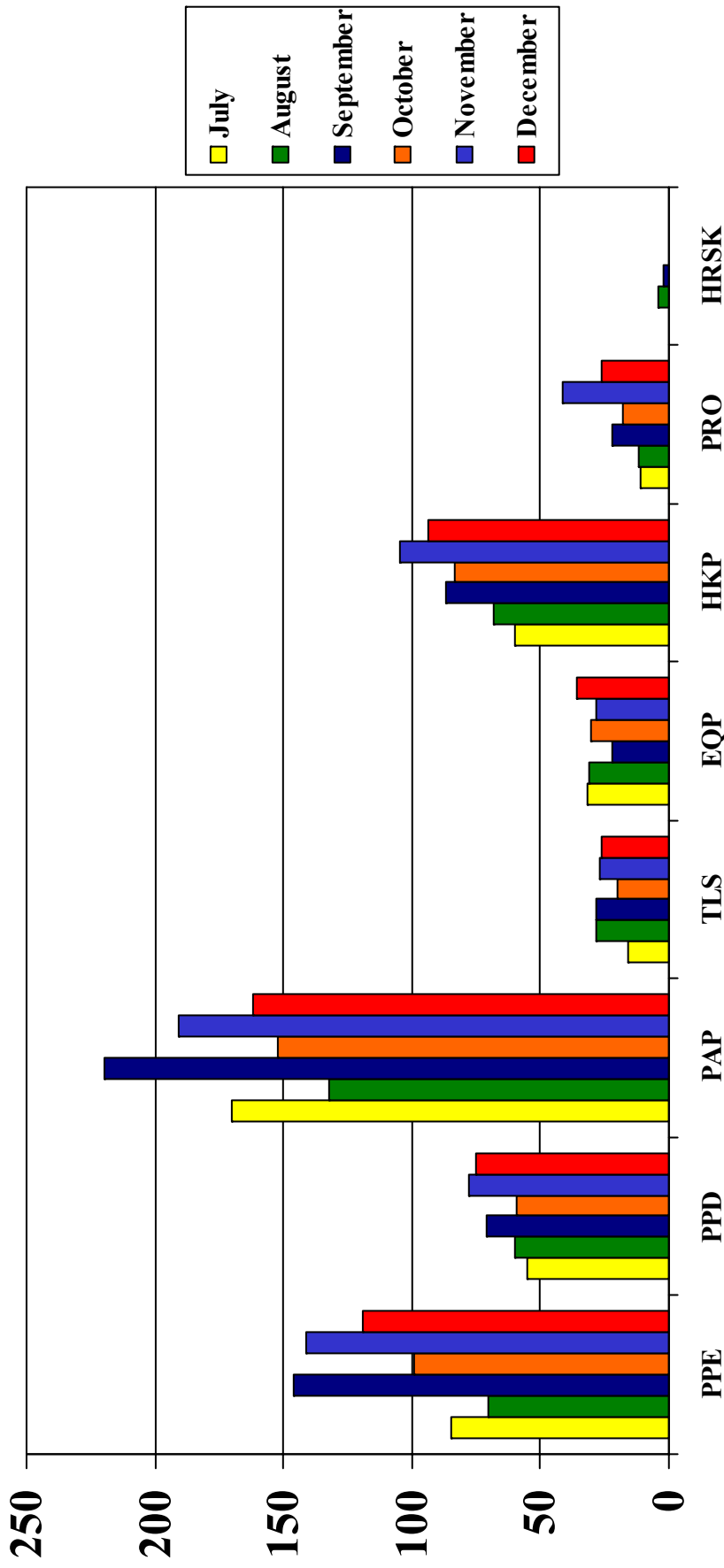


- INADEQUATE
- UNSAFE HANDLING
- NOT AVAILABLE
- FAULTY

**INADEQUATE & EQUIPMENT NOT AVAILABLE  
WAS HIGH IN DECEMBER!**

# 6 Month Observation Breakdown

## Contractor Submitted Data



**1659 Observations this month by 203 Observers!**  
**Don't forget to do your "TASC"**