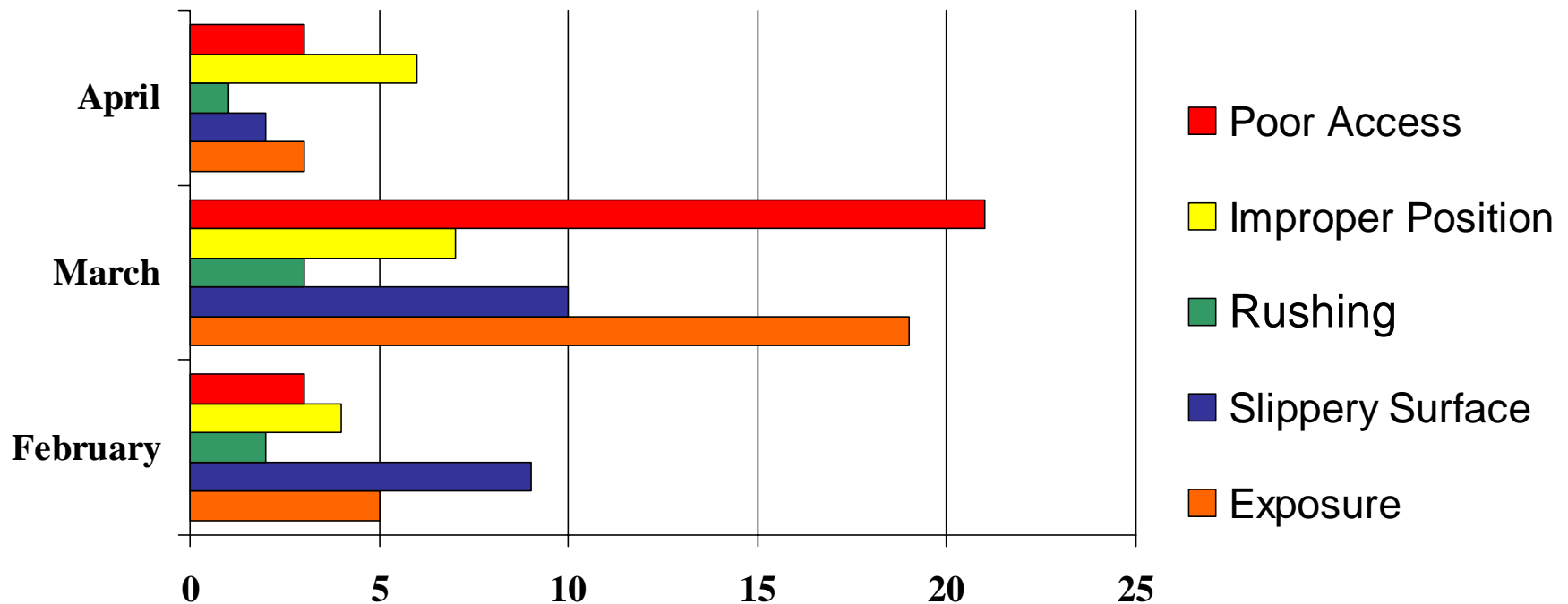


# # 2 “At Risk” Behaviour

## Top 4 of 9

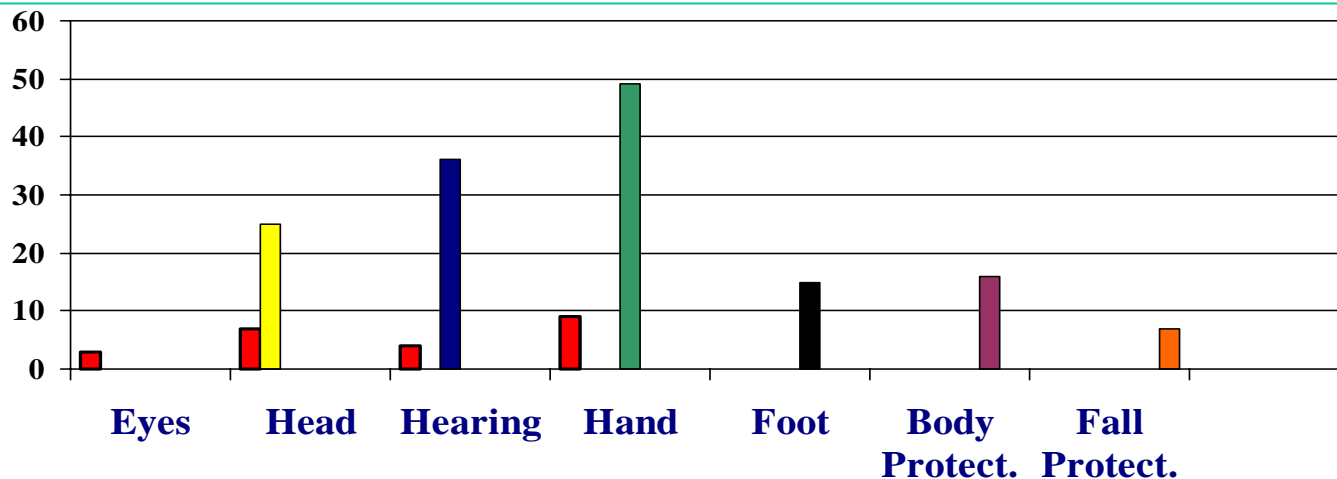
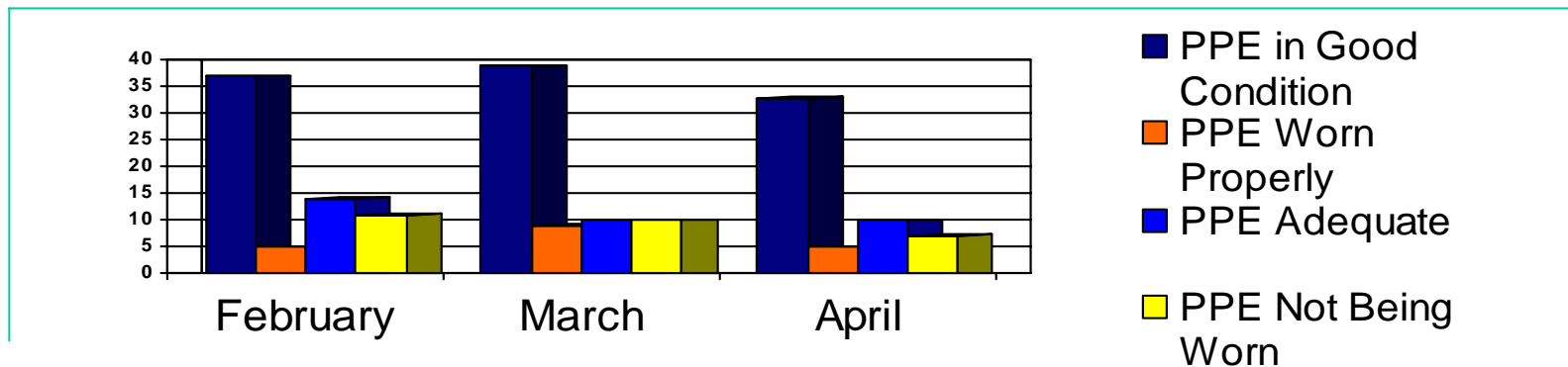
Q1 2005 - PAP



Improper Position was the highest  
“AT RISK” in April!

# #1 \*At Risk Behaviour\*

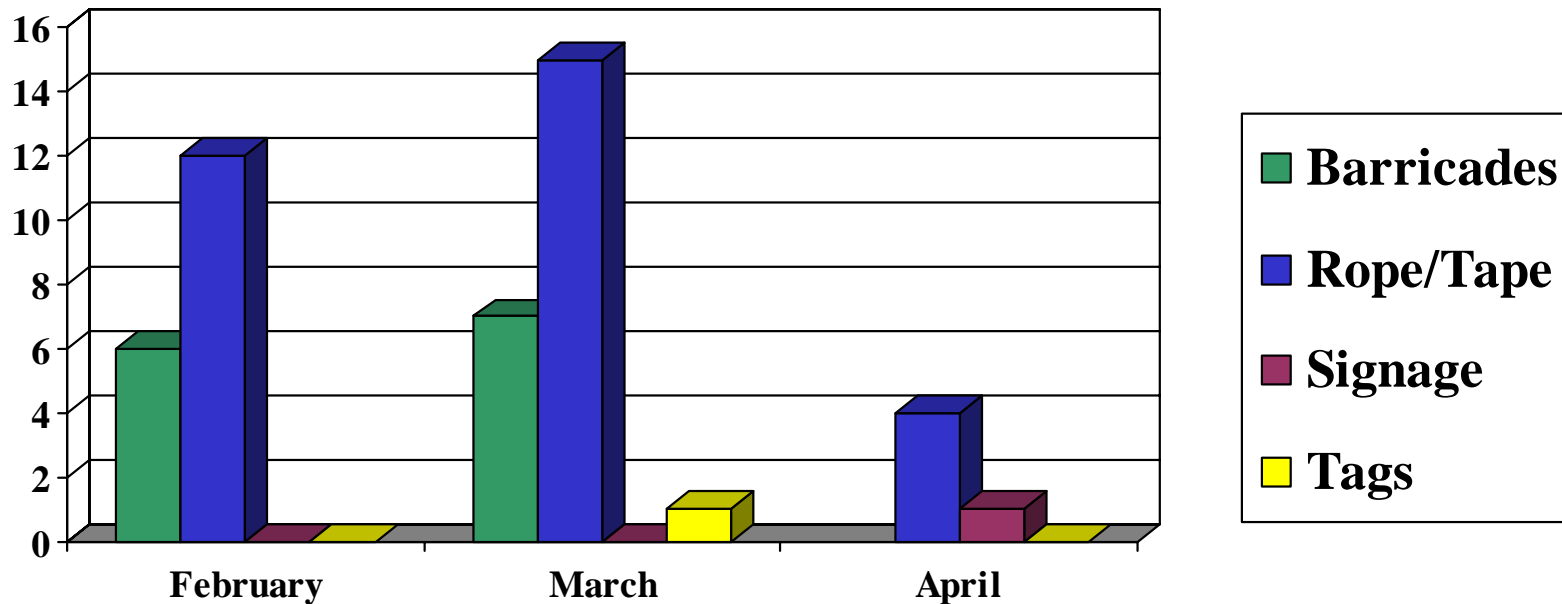
## Q1 2005 - PPE



**NO HAND PROTECTION LEADS to HAND INJURIES!**

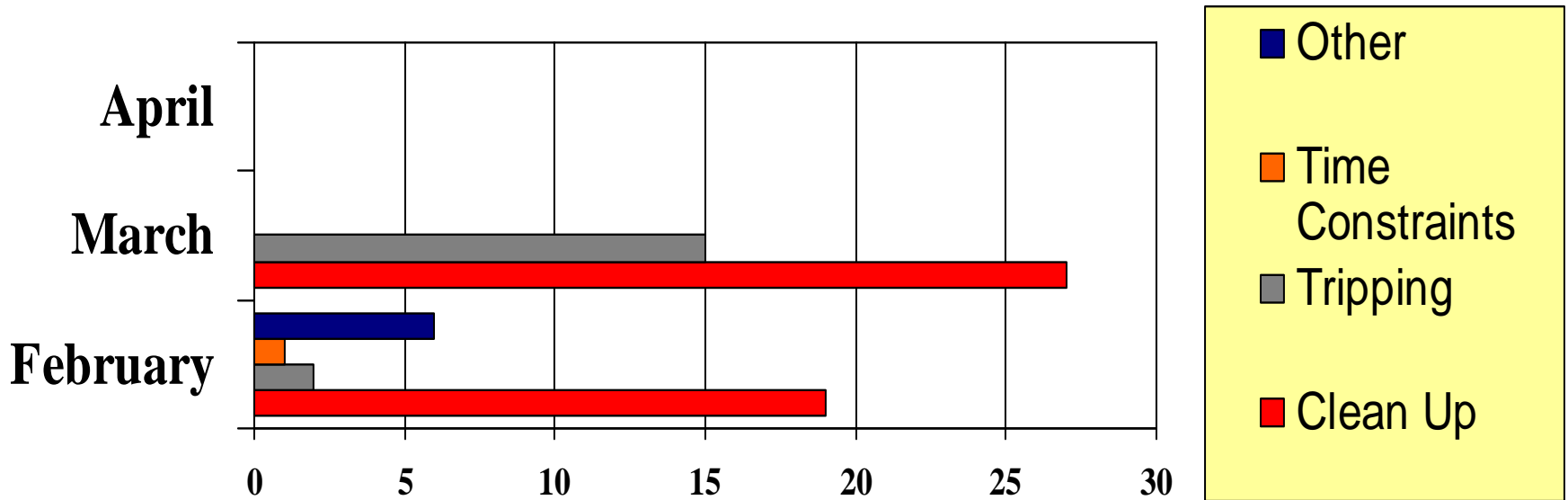
# #3 “At Risk”

## Q1 2005 - PPD



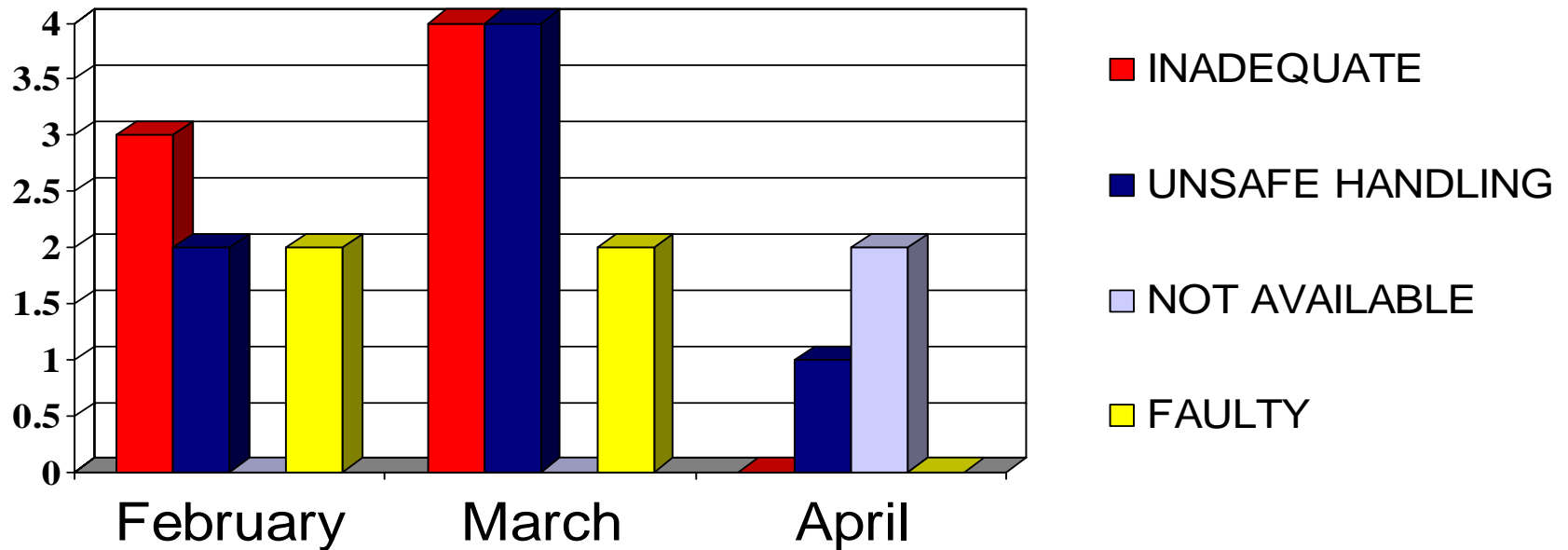
**ROPE & TAPE were an “AT RISK”  
for February, March and April**

# #4 “At Risk” Behaviour Q1 2005 – Housekeeping



**MAKING TIME FOR CLEAN UP WILL  
HELP STOP TRIPPING!**

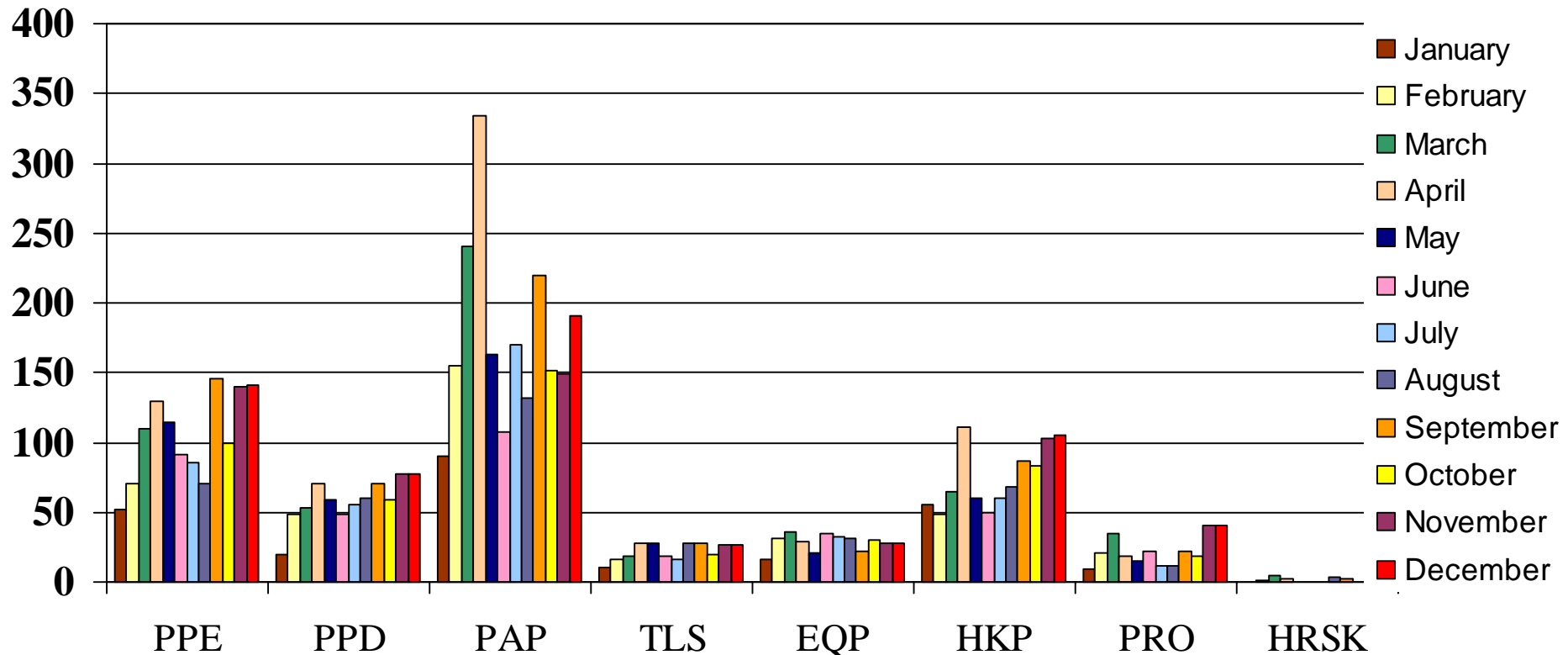
# #5 At Risk Behaviour Q1 2005 - EQUIPMENT



**INADEQUATE EQUIPMENT WAS HIGH  
in the FIRST QUARTER!**

# 12 Month Observation Breakdown

## 2004 Contractor Submitted Data



23,099 Observations last year by 2,061 Observers!  
Don't forget to do your "TASC"